

# Inventory and Summary of Storm Water Utilities in Wisconsin

Leif Hauge, PE, Prof. Hydrologist  
Waukesha County Land Resources  
Division

# What Is a Storm Water Utility?

- A special assessment set up to generate funding specifically for storm water management.
- Businesses and residents within the utility district pay a storm water fee, and the revenue collected
  - supports maintenance of the existing storm drain systems,
  - supports development of drainage plans,
  - flood control measures,
  - water quality programs, and
  - funds major capital expenses (new sewers, BMPs)

# Utility Fees vs Property Taxes

- Fees are alternative to raising property taxes
- Taxes are based on the value of the land, regardless of how much service is actually used
- Utility fees are generally based on how much of the service is used (area of impervious surface → quantity of storm water managed)
- Utility fees are placed in a segregated fund, for a specific purpose.
- Taxes go into general pot.

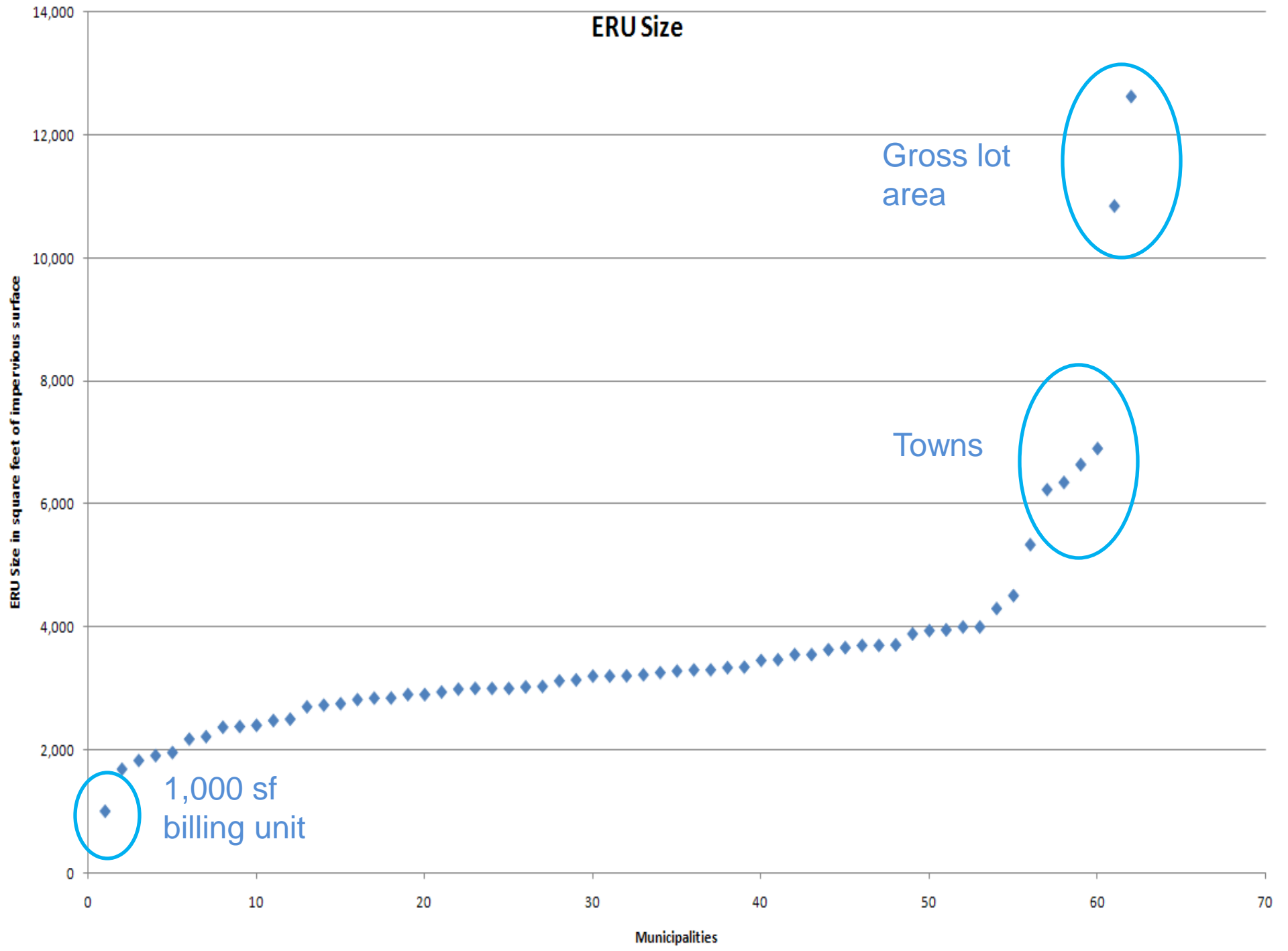
- WI Storm Water User Charge System Information
- Survey compiled by Jeff Mazanec – APWA
- 78 municipalities

	Name of Community or Stormwater District	Recent Population	Created/ Started in:	ERU Size (sf)	Annual \$/ERU or 1 fam home	Credit Policy?		Comments/ Web site addresses
						Y/ N	Max Amount	
1	Allouez (Village)	15,443	2006	3,663				www.villageofallouez.com
2	Appleton (City)	70,293	1995	2,368	\$ 125.00	Y	77%	www.appleton.org
3	Baraboo (City)	10,771	2005	2,379	\$ 46.87			www.cityofbaraboo.com
4	Barron (City)	3,250	2005	10,850	\$ 24.00	Y	75%	www.barronwi.us
5	Bellevue (Village)	14,386	2002	3,221	\$ 48.00	Y	100%	www.bellevue-wi.com
6	Beloit (City)	35,803	2006	3,347	\$ 36.00			beloit.govoffice3.com/ www.browndeerwi.org
7	Brown Deer (Village)	11,895	2004	3,257	\$ 91.80	N		www.butlerwi.gov/
8	Butler (Village)	1,885	1999	3,032	\$ 66.00			www.chetek.net
9	Chetek (City)	2,180	2005		\$ 27.00	Y		www.ci.chippewa-falls.wi.us
10	Chippewa Falls (City)	13,374	2005		\$ 36.00			www.ci.cudahy.wi.us
11	Cudahy (City)	18,430	2001	2,700	\$ 60.00	Y	\$2/ ERU	www.vi.deforest.wi.us/ www.cityofdelafield.com/ www.de-pere.org/ www.ci.eau-claire.wi.us
12	De Forest (Village)	7,400	2005	2,900	\$ 60.00			www.elmgrovewi.org
13	Delafield (City)	7,820	2004	1,000	\$ 29.00			www.city.fitchburg.wi.us
14	De Pere (City)	20,560	2003		\$ 47.00			www.city.fitchburg.wi.us
15	Eau Claire (City)	62,576	1997	3,000	\$ 68.00	Y	100%	http://www.vil.fox-point.wi.us/ http://www.fortatkinsonwi.net/ http://www.garnerscreekutility.org/ www.glendale-wi.org
16	Elm Grove (Village)	6,250	2004	6,235	\$ 65.50			www.grandchute.net
17	Fitchburg (City) - Urban	20,000	2002	3,700	\$ 70.40	Y	50%	www.grantsburgwi.com
18	Fitchburg (City) - Rural	4,000	2002	3,700	\$ 24.20	Y	50%	www.ci.green-bay.wi.us
19	Fox Point (Village)	6,816	2009	2,988	\$ 126.72			www.greendale.org
20	Fort Atkinson (City)		2009	3,096	\$ 37.98			http://www.ci.greenfield.wi.us/ www.townofgreenville.com
21	Garners Creek (watershed)		1998	3,623	\$ 96.00	Y	85%	http://www.halescorners.org/ www.harrison.org
22	Glendale (City)	13,400	1996	3,200	\$ 42.00	N	‡	www.hobart-wi.org/ www.homenwi.com
23	Grand Chute (Town)	20,200	1997	3,283	\$ 48.00	Y	85%	www.villageofhoward.com
24	Grantsburg (Village)	1,397	2004		\$ 18.00	Y	75%	www.ci.janesville.wi.us
25	Green Bay (City)	102,350	2004	3,000	\$ 63.76	Y	67%	www.kenosha.org
26	Greendale (Village)	14,410	2004	3,941	\$ 78.00	Y	50%	www.lakedelton.org
27	Greenfield (City)	35,476	2009	3,630	\$ 49.80			www.lancasterwisconsin.com
28	Greenville (Town)	8,008	1999	4,510	\$ 60.00	Y	85%	www.lisbon.com
29	Hales Corners (Village)	7,665	2008	3,952	\$ 9.00			www.littlechutewi.org
30	Harrison (Town of)	5,800	1998		\$ 96.00			www.madison.com
31	Hobart (Village of)	5,834	2007	4,000	\$ 72.00	Y	50%	www.mcfarland.wi.us
32	Holmen (Village of)	7,176	2007	3,550	\$ 44.00	Y	50%	www.menominee-wi.gov/ http://www.ci.milton.wi.us/ www.milwaukee.com
33	Howard (Village)	15,774	2005	3,301	\$ 44.00			www.monona.wi.us
34	Janesville (City)	61,604	2003	3,200	\$ 36.44	Y	65%	www.cityofmonroe.org
35	Kenosha (City)	96,845	2007	2,477	\$ 60.00	Y		www.ci.neenah.wi.us
36	Lake Delton (Village)	2,975	1993	1,685	\$ 18.00	Y	100%	www.newberlin.org
37	Lancaster (City)	4,033	2008	2,400	\$ 24.00	Y		www.ci.new-richmond.wi.us
38	Lisbon (Town)	9,359	2007	6,642	\$ 40.00	Y	50%	www.nfdl.org
39	Little Chute (Village)	10,830	1998	2,752	\$ 96.00	N		www.oakcreekwi.org/ www.cityofonalaska.com
40	Madison (City)	220,332	2001	Ind'l Msmt	\$ 55.00	Y	50%	www.co.la-crosse.wi.us/townofonalaska
41	McFarland (Village)	6,416	2007	3,456	\$ 46.85			www.ci.oshkosh.wi.us
42	Menominee (City of)	15,318	2008	3,000	\$ 32.00	Y	20%	http://www.pleasantprairieonline.com/ www.pleasantprairieonline.com/ www.poynette-wi.gov/ www.cityofracine.org
43	Milton (City of)	5,667	2009		\$ 55.13			www.racine.org
44	Milwaukee (City)	597,000	2006	1,610	\$ 82.20	Y	60%	www.raymondtownof.com
45	Monona (City)	8,000	2004	NA *	\$ 60.00	Y	65%	www.reedsburgwi.gov
46	Monroe (City)	10,600	2006	2,728	\$ 60.00			www.rfcity.org
47	Neenah (City)	24,600	2003	3,138	\$ 80.00			
48	New Berlin (City)	38,719	2001	4,000	\$ 60.00	N		
49	New Richmond (City)	7,726	2004	12,632	\$ 28.68	Y	75%	
50	N. Fond du Lac (Village)	4,557	2007	3,123	\$ 56.00	Y		
51	Oak Creek (City)	28,456	2003	3,300				
52	Onalaska (City)	16,690	2009	3,888	\$ 50.95	Y	40%	
53	Onalaska (Town)	5,600	2005	3,709	\$ 24.00			
54	Oshkosh (City)	65,000	2003	2,817	\$ 62.97	Y	40%	
55	Pewaukee (City)	11,783	3010	5,339	\$ 120.00			
56	Pleasant Prairie (Village)	18,000	2006		\$ 15.00			
57	Poynette (Village)	2,563	2006	3,550	\$ 50.00			
58	Racine (City)	81,855	2004	2,844	\$ 72.30	Y	40%	
59	Raymond (Town)	3,516	2008	\$0.0036/ sf impervious area		N		
60	Reedsburg (City of)	8,594	2008	3,024	\$ 46.00	Y	50%	
61	River Falls (City)	13,019	1998	NA *	\$ 37.68	Y	100%	

# Equivalent Runoff Units (ERUs) and Billing Units Used Nationally

- Single family residence / lot
- Runoff equivalency factor
- Billing units
  - 500 sf impervious surface
  - 1 acre of gross lot area
- Equivalent hydraulic acreage =  $(\text{imp. ac.} * 0.95) + (\text{pervious ac.} * 0.15)$
- Arizona – based on drinking water usage

# ERU Size

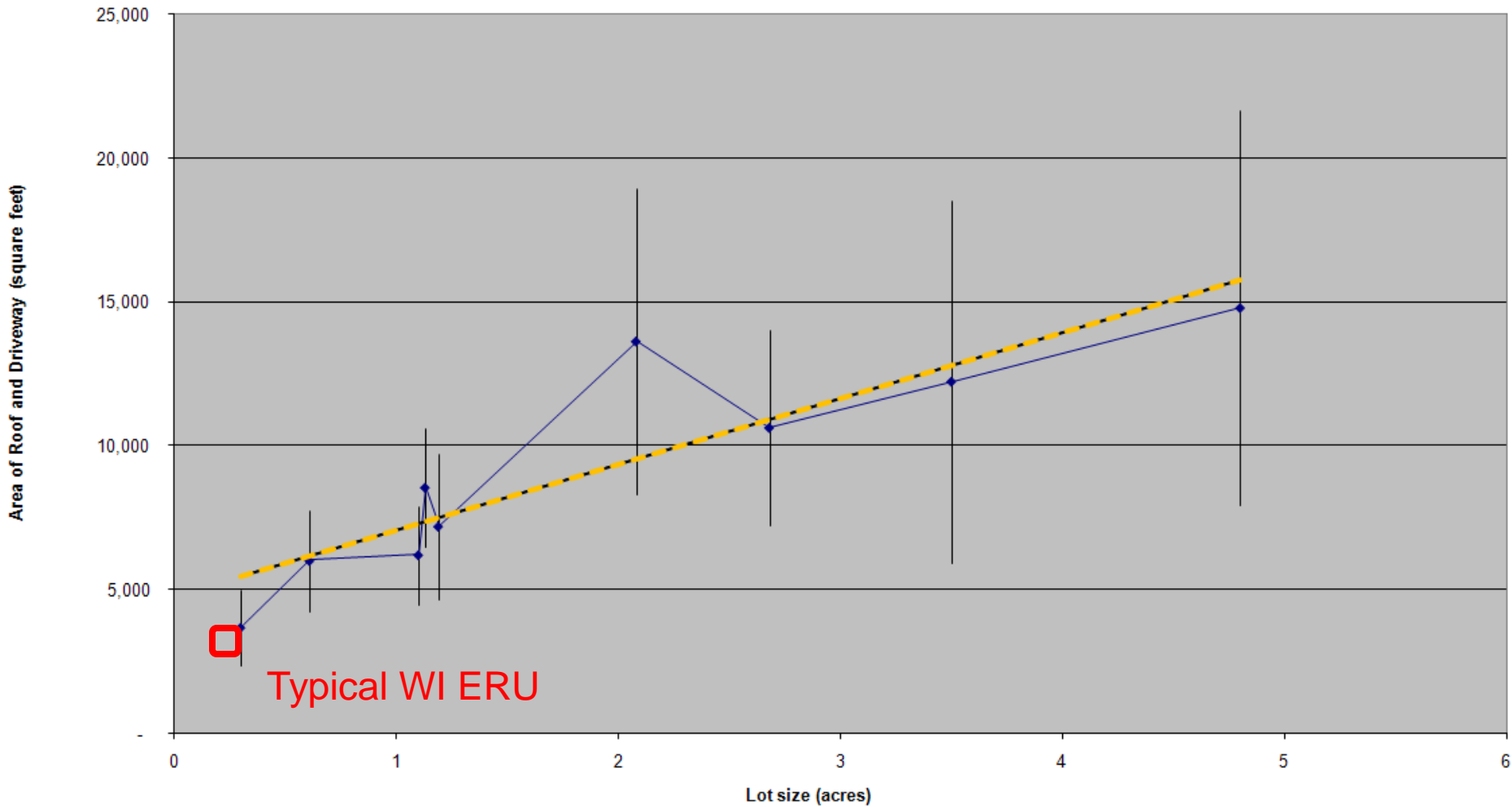


# Variety in Size of ERUs

- Median = 3,202 sf
- Outliers at high end may be gross area, not impervious surface
- 2,800 sf = national average per 2006 study by Western Kentucky U.
- 3,690 sf = measured imperviousness for one 0.3-acre lot 1920s subdivision in Waukesha County

# Is the Average Imperviousness Reasonable?

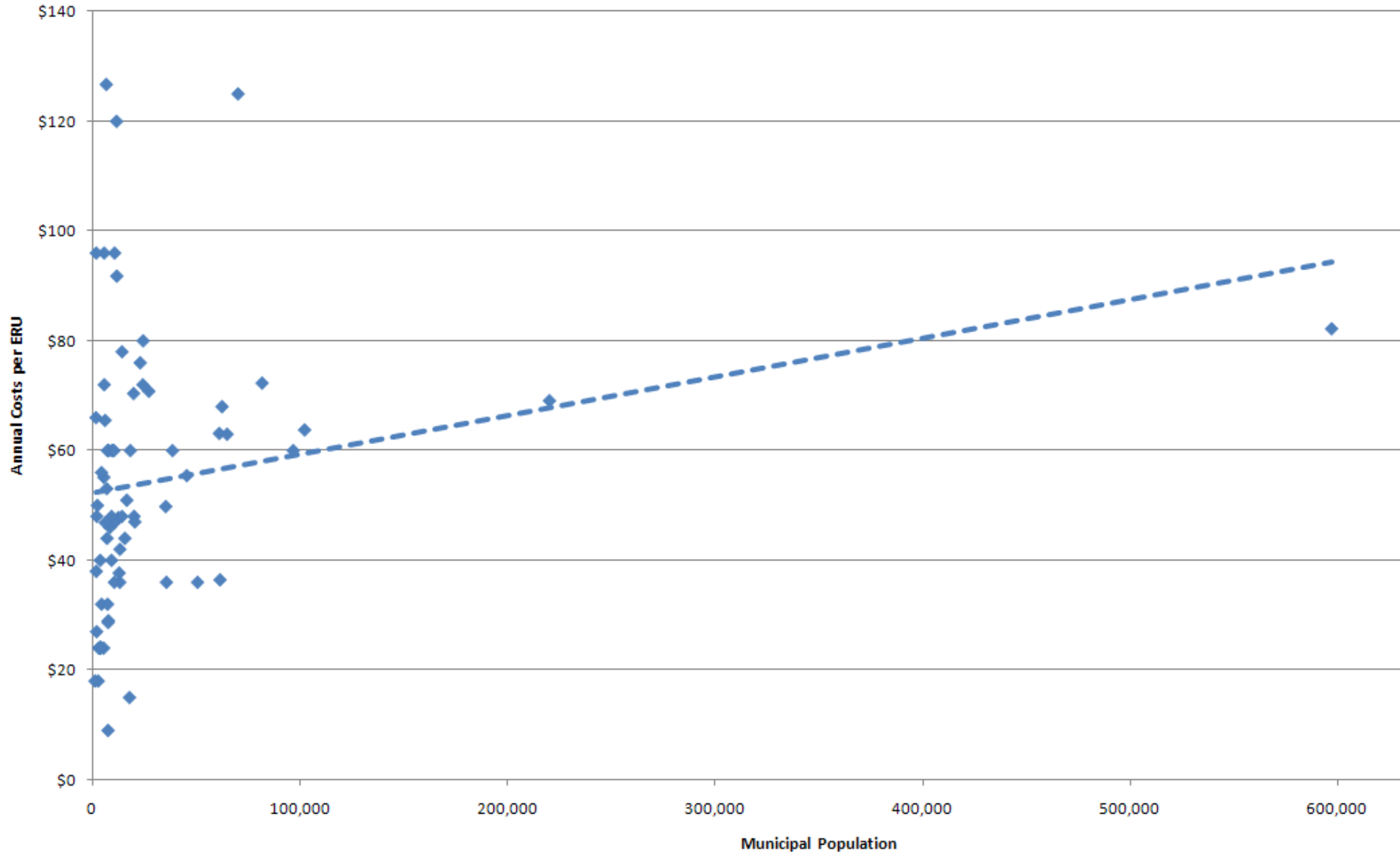
**Survey of Nine Waukesha County Subdivisions**  
Lot Size vs Roof and Driveway Area  
Per Lot,  
Error Bar = One S. Dev.



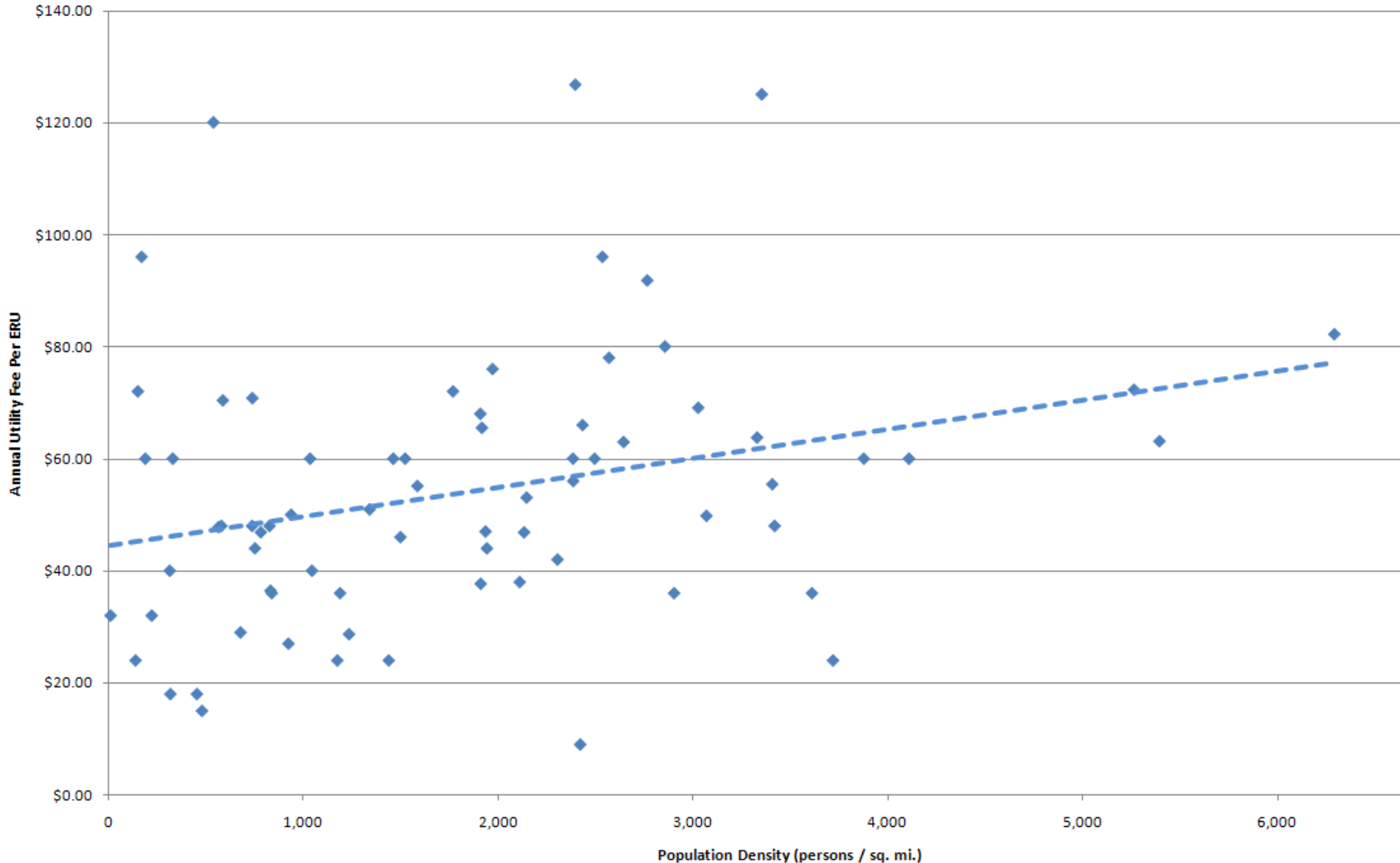


What is the best way to compare  
different municipalities' storm  
water utility fees?

# Annual Cost per ERU vs Population: $r=0.21$

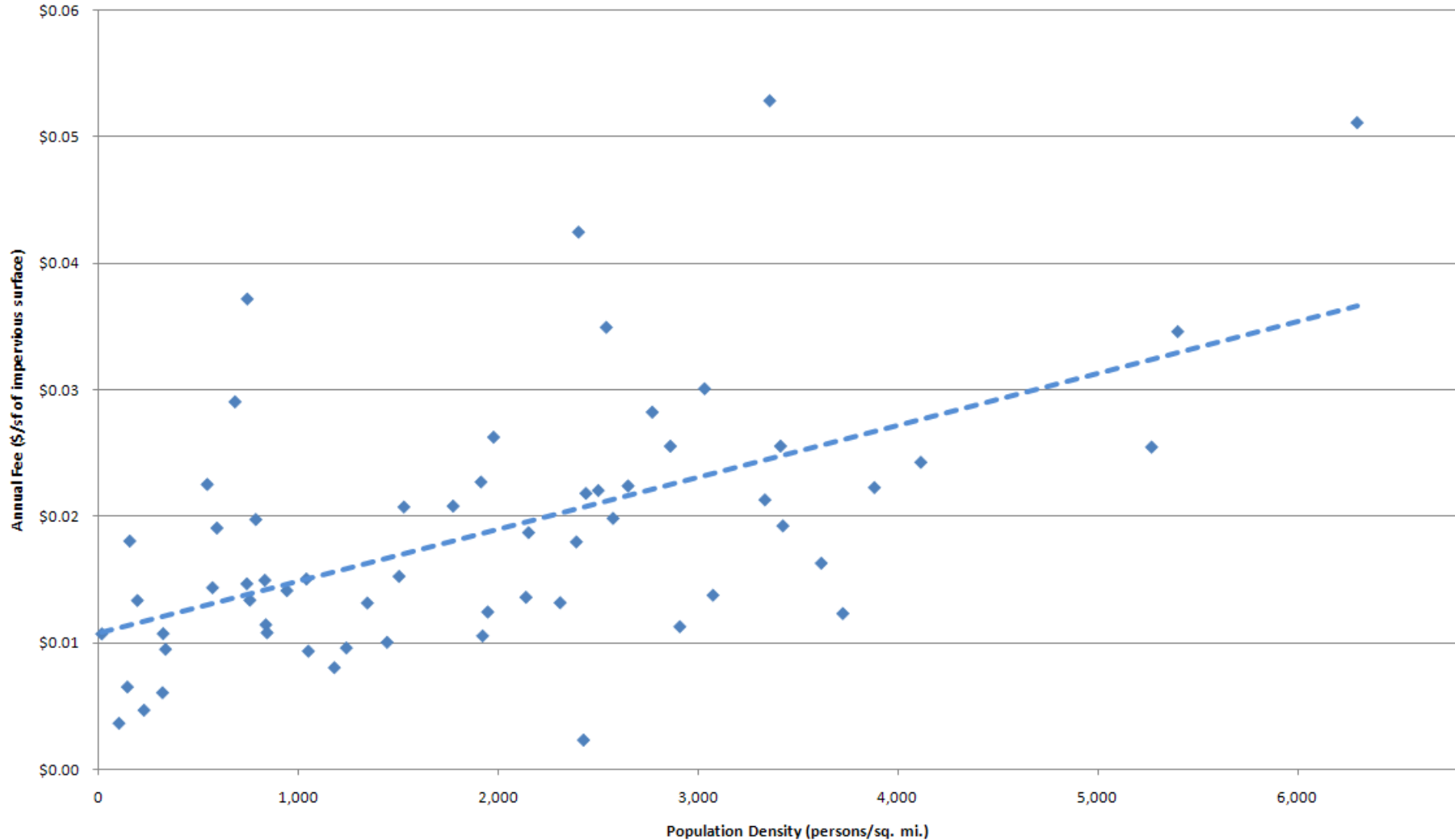


# Annual Cost per ERU vs Pop. Density: $r=0.29$





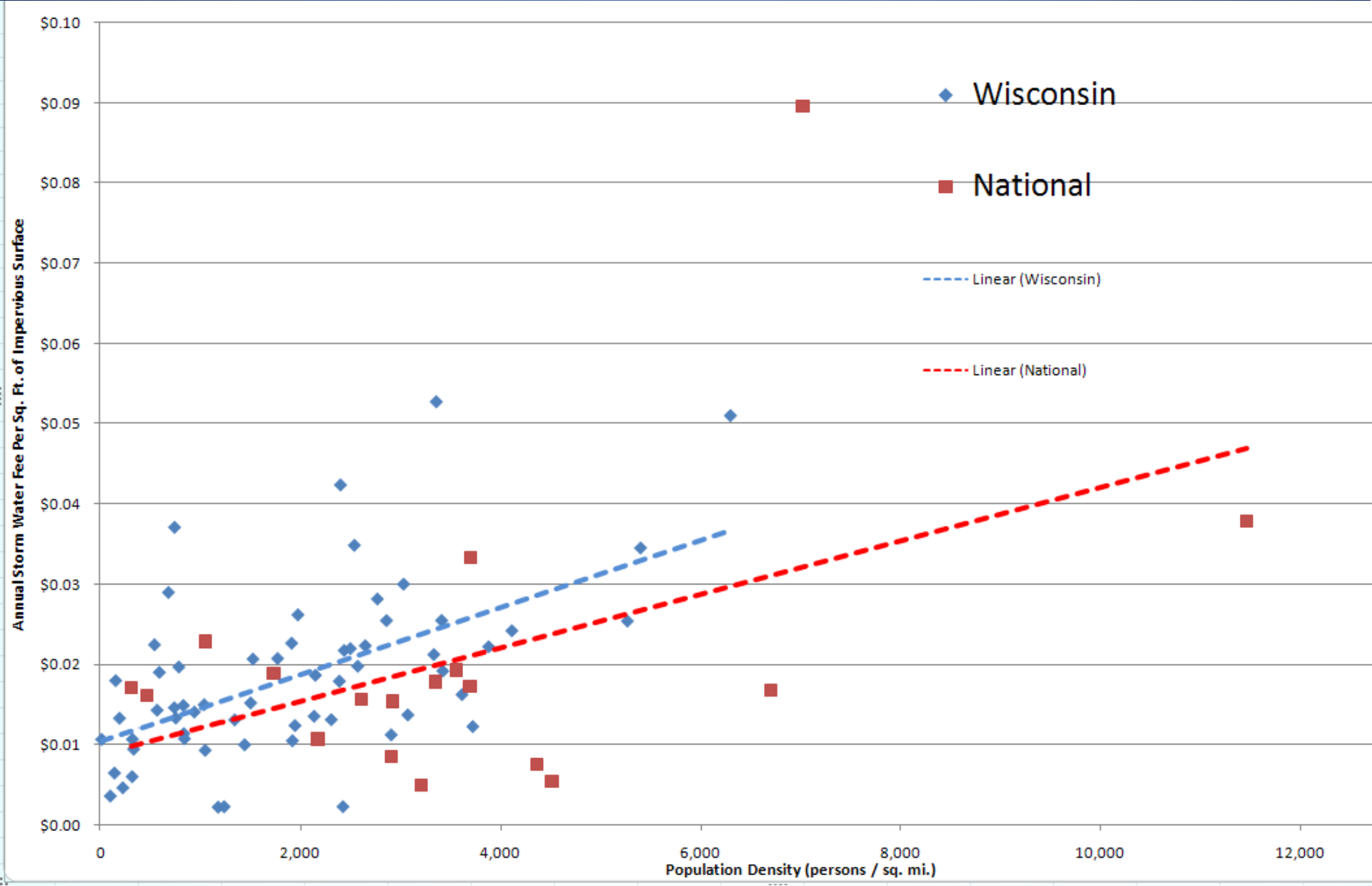
# \$/yr/sf imp. surf. vs Pop. Density: $r=0.56$



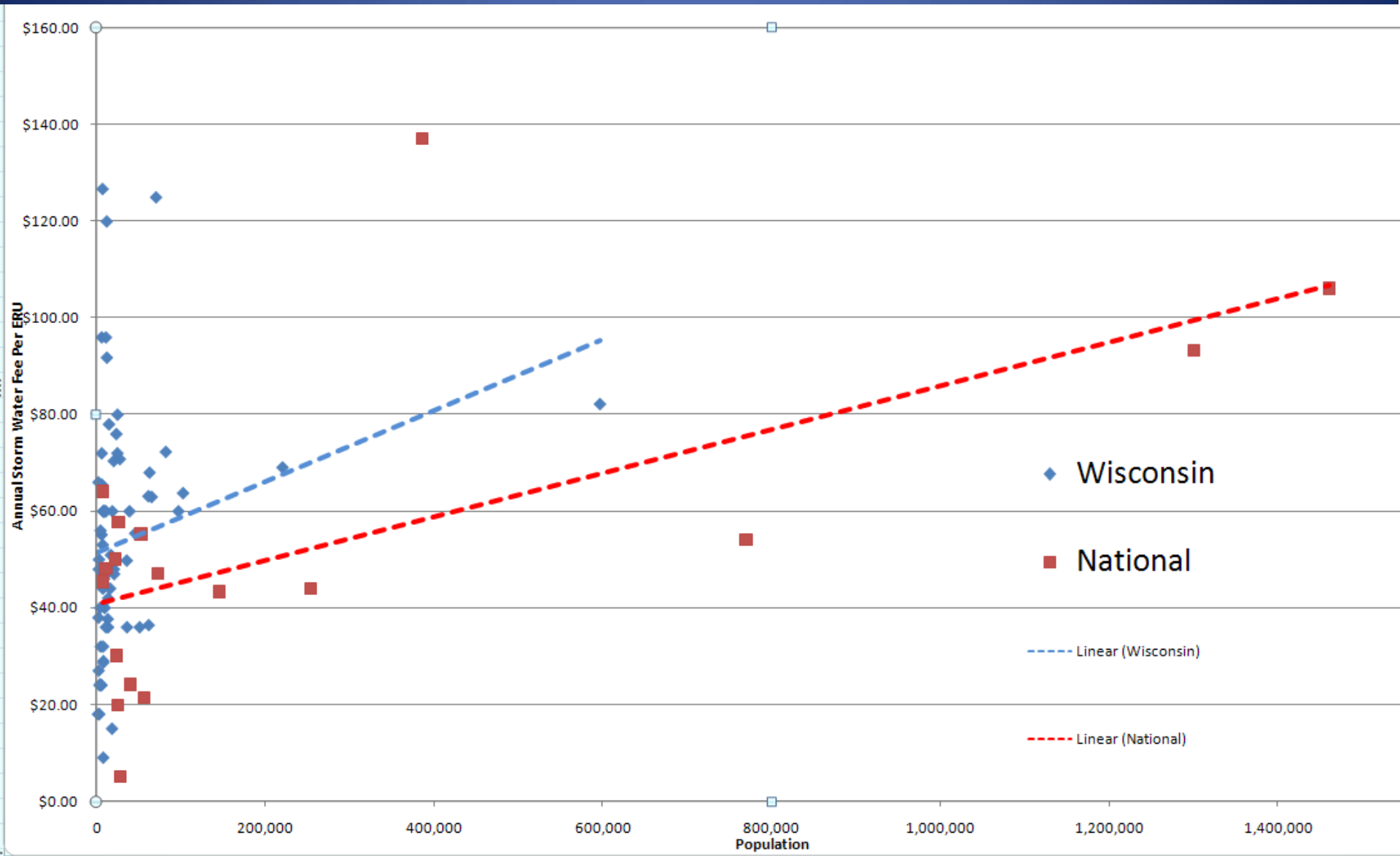
# A Sampling of Utility Fees in Other States

Location	Population	Pop. Density (persons/sq. mi.)	Basic unit size (sf)	Basis	ERU / single family lot / Billing unit	Annual Fees	Data sources	Notes
National average of 600 SWUs			2,800	Imp. Surf.	Single family lot	\$ 15.40	Survey taken by Western Kentucky University	Mark Hoskins, P.E., CFM, Manhard Consulting Ltd. From IAFSM Fall 2006 Newsletter
Moline, IL	43,050	2,751	10,000	Gross lot area	EHA	\$ 23.20	City website	Equivalent hydraulic acreage = (imp. Ac. * 0.95) + (pervious ac. * 0.15)
DuPage County, IL	930,528	2,784	500	Imp. Surf.	Billing unit	\$ 4.50	County website	SFR - 6 billing units - \$27/yr
Normal, IL	52,799	3,688	3,200	Imp. Surf.	ERU / SFR	\$ 55.20	City website	
Rolling Meadows, IL	24,607	4,510	3,600	Imp. Surf.	ERU / SFR	\$ 19.80	City website	
Bloomington, IL	74,184	3,297	12,000	Gross lot area	Single family lot	\$ 87.00	City website	"Large"
Bloomington, IL	74,184	3,297	7,000	Gross lot area	Single family lot	\$ 34.80	City website	"Small"
Bloomington, IL	74,184	3,297	1,000	Imp. Surf.	IAU	\$ 17.80	City website	Minimum of 4 IAUs / parcel, \$67/yr.
Grand Rapids, MN	7,764	1,057			SFR	\$ 64.00	City website	
Grand Rapids, MN	7,764	1,057	43,560	Gross lot area	Billing unit	\$ 360.00	City website	
Austin, MN	23,300	2,168			SFR	\$ 30.00	City website	
Austin, MN	23,300	2,168	43,560	Gross lot area	Billing unit	\$ 135.00	City website	Institutional
Austin, MN	23,300	2,168			Apartment	\$ 7.56	City website	
Austin, MN	23,300	2,168	43,560	Gross lot area	Billing unit	\$ 180.00	City website	Commercial
Cloquet, MN	11,200	318			REF	\$ 48.00	City website	
New Brighton, MN	22,200	3,344			SFR	\$ 50.00	City website	
New Brighton, MN	22,200	3,344	43,560	Gross lot area	Billing unit	\$ 15.00	City website	Park, Cemetery, Golf Course
New Brighton, MN	22,200	3,344	43,560	Gross lot area	Billing unit	\$ 158.00	City website	School
New Brighton, MN	22,200	3,344	43,560	Gross lot area	Billing unit	\$ 215.00	City website	townhouse and mobile home park
New Brighton, MN	22,200	3,344	43,560	Gross lot area	Billing unit	\$ 295.00	City website	Church
New Brighton, MN	22,200	3,344	43,560	Gross lot area	Billing unit	\$ 350.00	City website	Aptmnt, Condo, Sr. Housing, Nursing Home
New Brighton, MN	22,200	3,344	43,560	Gross lot area	Billing unit	\$ 658.00	City website	Commercial, Industrial, and Warehouse
New Brighton, MN	22,200	3,344	43,560	Gross lot area	Billing unit	\$ -	City website	Unimproved, Vacant land
Minneapolis, MN	385,378	7,020	1,530	Imp. Surf.	ESU	\$ 137.00	City website	1 ESU = 1 medium-sized SFR
Orono, MN	7,538	469			REF	\$ 45.32	City website	REF - Reunoff equivalency factor = imp. Surf. Of SFR
Gwinnett County, GA	700,000	1,360	100	Imp. Surf.	Billing unit	\$ 73.80	County website	Annual fee is for 3,000 sf imp surf
Newark, DE	28,547	3,200	21,780	Gross lot area	SFR	\$ 31.00	City website	
Newark, DE	28,547	3,200	1,000	Imp. Surf.	Billing unit	\$ 5.00	City website	Multifamily Residential, University, Business, Manufacturing, Industrial, Office
Santa Cruz, CA	56,124	4,356			SFR	\$ 21.24	City website	
Santa Cruz, CA	56,124	4,356	43,560	Gross lot area	Billing unit	\$ 261.09	City website	Commercial
Santa Cruz, CA	56,124	4,356	43,560	Gross lot area	Billing unit	\$ 5.28	City website	Vacant lot
Fort Wayne, IN	253,691	2,606			SFR	\$ 43.80	City website	Added to all residential customers' sewer / water bills
Fort Wayne, IN	253,691	2,606	2,500	Imp. Surf.	REU	\$ 43.80	City website	Added to all non-residential customers' sewer / water bills
Sarasota County, FL	366,250	570	3,153	Imp. Surf.	SFR	\$ 87.00	Philadelphia Inquirer	
Littleton, CO	40,400	2,902			SFR	\$ 24.00	Philadelphia Inquirer	
Littleton, CO	40,400	2,902	43,560	Gross lot area	Billing unit	\$ 50.00	Philadelphia Inquirer	Commercial
Wilmington, DE	73,069	6,698				\$ 47.00	Philadelphia Inquirer	
Philadelphia, PA	1,460,000	11,457			SFR	\$ 106.00	Philadelphia Inquirer	
Hampton, VA	145,600	2,919				\$ 43.20	Philadelphia Inquirer	
Wooster, OH	25,700	1,726	3,050	Imp. Surf.	SFR	\$ 57.60	Philadelphia Inquirer	
Dallas, TX	1,299,542	3,697	10,000	Gross lot area	SFR	\$ 93.24	City website	Middle of several size ranges
Columbus, OH	769,360	3,556			SFR	\$ 54.08	City website	Residential
Columbus, OH	769,360	3,556	2,000	Imp. Surf.	ERU	\$ 54.08	City website	Non-residential

# WI ~20% Above National Average



# WI ~25% Above National Average





# Possible City of Waukesha Storm Water Utility

- City is considering creating storm water utility
- Population 64,524
  - Estimate based on population: \$56/ERU/yr
- Density 3,005 persons/mi<sup>2</sup>
- Average lot 12,084 sq. ft. gross, 15,676 parcels
- ERU = 2,941 sq. ft.
  - \$0.02/yr/sf impervious surface
  - $(\$0.02/\text{yr}/\text{sf}) * 2,941 \text{ sf}/\text{ERU} = \$59/\text{yr}/\text{ERU}$ , estimate based on pop. density and impervious area / lot

# Conclusions

- Storm water fee rates go up as population goes up.
- Population density and \$/yr/sf imp. surf. are best predictor of annual fees.
- Wisconsin storm water fees are 20% higher than national fees, based on density and \$/yr/sf imp. surf.
- Wisconsin storm water fees are 25% higher than national fees, based on total population and annual ERU rates.
- Impervious surface per ERU seems reasonable, based on small urban lots (1/4 acre).