

## Soil Samples

Our office provides Soil Test Kits that include instructions for collecting a sample, the form you submit with your sample to the UW Soil & Forage Lab in Madison and a soil bag (although you can use any clean plastic bag).

You have two options for obtaining forms:

- ◆ Request a test kit by contacting our Horticulture Helpline at 262-548-7779

or

- ◆ Print the form from the Lab website at <https://uwlabs.soils.wisc.edu/soil-samples/lawn-garden/>

### Process:

- ◆ Mail your form, sample and payment to the UW Soil & Forage Lab in Madison

### What you get:

- ◆ Current soil pH
- ◆ Analysis of the current nitrogen, potassium and phosphorus content of your soil
- ◆ Recommendation of type and amount of fertilizer to add

### What does it cost?

- ◆ \$15.00 per sample

## Horticulture Helpline

Do you have a yard or garden question, or an additional question about how to submit a sample for diagnosis?

**Call our Horticulture Helpline at:**

**262-548-7779**

9:00 am-12:00 pm

Days of the week vary by season.  
Voicemail available year-round

**Or email us at:**

**[uwex1@waukeshacounty.gov](mailto:uwex1@waukeshacounty.gov)**

---

An EEO/Affirmative Action employer, University of Wisconsin-Madison Extension provides equal opportunities in employment and programming, including Title VI, IX and ADA requirements.

---

### University of Wisconsin-Madison Extension Waukesha County

515 W Moreland Boulevard AC G22  
Waukesha, WI 53188

Phone: 262-548-7770

Horticulture Helpline: 262-548-7779

E-mail: [uwex1@waukeshacounty.gov](mailto:uwex1@waukeshacounty.gov)

Website: [www.waukeshacounty.gov/uwex/](http://www.waukeshacounty.gov/uwex/)



**Extension**

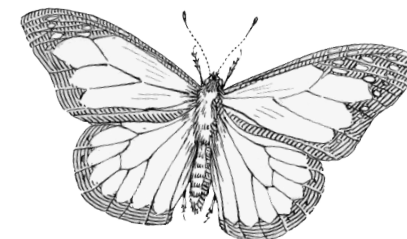
UNIVERSITY OF WISCONSIN-MADISON  
WAUKESHA COUNTY

# Horticulture Diagnostic Services

---

**Services provided  
by our office:**

- Plant Identification
- Plant Disease Diagnosis
- Garden Insect Identification



## Plant Disease Diagnosis

### What you get:

- ◆ Identification of the disease
- ◆ Control options

### What we need:

- ◆ Sample of diseased plant
- ◆ For small plants (flowers, turf grass, vegetables, etc.), submit entire plant including roots if possible
- ◆ For larger plants (trees, shrubs), submit plant parts that are showing disease (leaves, stem, branch)
- ◆ If possible submit the “transition zone,” some healthy and some diseased tissue
- ◆ Plant samples should be placed in plastic bags, do NOT add water
- ◆ Turf samples should be wrapped in foil, do NOT add water

### What does it cost?

- ◆ \$5.00 per sample
- ◆ Some samples may require additional testing

## Garden Insect Identification

### What you get:

- ◆ Identification of the insect
- ◆ Control options

### What we need:

- ◆ A plant sample showing insect damage
- ◆ Insect itself if still present (submit sample in plastic bag, do not squash the bug)

### What does it cost?

- ◆ \$5.00 per sample

## Home Insect Identification

Home insect identification is offered by the UW Madison Department of Entomology Insect Diagnostic Lab in Madison. **Do not** bring the sample to the Waukesha County office.

### For forms and instructions:

- ◆ Visit the UW Madison Insect Diagnostic Lab website at <https://insectlab.russell.wisc.edu/>

## Plant Identification

### What you get:

- ◆ Name of plant
- ◆ If it is a weed, what potential problems it might create
- ◆ Control options

### What we need:

- ◆ Location where the plant was found
- ◆ If possible, submit entire plant (especially weeds), the roots may be important for identification
  - For trees and shrubs, a branch with leaves attached
  - Flowers or fruit are also helpful in identification
- ◆ Turf samples should be wrapped in foil, do NOT add water

### What does it cost?

- ◆ \$5.00 per sample



## SUBMITTING A SAMPLE TO THE EXTENSION OFFICE IN WAUKESHA COUNTY:

Bring plant or plant insect samples to our office between 8:00 am and 4:15 pm.

We are located in the County Courthouse Complex at 515 W Moreland Boulevard. Enter through the main Courthouse doors for security screening, then proceed to room G22 in the Administration Center of the courthouse complex.