

The Garden Connection

A newsletter for the gardeners at the Waukesha County Rental Gardens

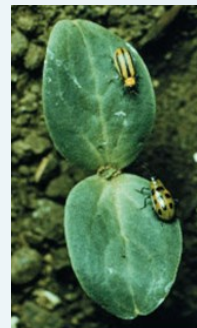
Annual Garden Harvest Breakfast Celebration — Saturday, August 19th

I hope to see you Saturday, August 19th at 9 a.m. for our 24th Annual Harvest Breakfast Celebration. Come and meet some of the other gardeners and enjoy a delicious pot luck style breakfast. We keep our gathering brief as we know you may have other things going on a Saturday in summer. Here are the details:

- ◆ We gather from approximately 9 to 10 a.m. at the garden entrance near the picnic tables. You can't miss us. (Come for as long as you can.)
- ◆ No cost to participate but we ask you to bring a food item to share with everyone. Items brought in the past include: bakery, hot breakfast casseroles, fresh fruit, fresh veggies, bagels, muffins, etc.
- ◆ Paper plates, napkins, plastic ware, and coffee are provided.
- ◆ We hold a short garden meeting around 9:45 a.m. Let's talk about what is working and what can be improved. We welcome your suggestions.
- ◆ **If the weather seems questionable on Saturday morning**, call 262-548-7788 and listen to the outgoing voice mail message. If weather is poor or rain is predicted during that time period, we will cancel.

Did You Have Problems with Your Cucumbers?

At my youth garden located within the Rental Gardens I have seen my cucumbers struggle this year. I am blaming Cumber Beetles since I have seen these pests in my garden. These striped and spotted cucumber beetles are common pests of vine crops. They can cause severe damage to roots, leaves, flowers, and the fruits (cucumbers). In addition to their damage from feeding, they can carry and transmit disease-causing bacteria and viruses that can cause your plants to decline and eventually die. If you have had problems with this pest, see the Extension Fact Sheet about this pest. It provides recommended control methods. It also lists some recommended varieties that are less likely to attract these insects. Go to <https://hort.extension.wisc.edu/articles/cucumber-beetles/>.



Permanent Plots

If you have a permanent plot and have not gardened your plot to its "potential" and/or have not gardened much, please consider giving it up. We have gardeners who are interested in a permanent plot and would be happy to begin this fall to prepare the plot for next year's gardening season. Thank you.



Inside this issue

Harvest Breakfast.....	1
Cucumber Problems.....	1
Permanent Plots	1
Bulletin Board	1
Harvesting Veggies.....	2
Plant Waste Piles	2
Garden Sketch	2
Permanent Plots	2
Gardening Assistance....	2
Contact Information.....	2



Bulletin Board Garden Entrance

Please watch the bulletin board at the entrance to the garden for new messages or updates. It is the easiest way for us to get a timely message to the gardeners! If there is something that you feel we need to include on it, please let us know!



(Photo courtesy photos-public-domain.com.)

Harvesting Vegetables — When Are They Ready to Pick?

Curious as to when that acorn squash is ready to pick? Check out the Extension publication called “Harvesting Vegetables from the Home Garden.” You can find it by googling “harvesting vegetables UW Madison Extension” or find it at <https://hort.extension.wisc.edu/articles/harvesting-vegetables-home-garden/>. The publication is free. It can be read online or downloaded and printed. The publication provides great tips on what to look for when deciding to harvest your vegetables. For example, for winter squash (i.e., acorn or butternut

squash) — harvest when fruits are full size, the rind is firm and glossy, and the portion of the fruit touching the soil is cream to orange. This can be seen usually around 50-55 days after fruit set.

Plant Waste Piles

There are five established plant waste piles located at the garden. Please place plant waste in those piles rather than starting new piles. The approximate pile locations are between the Port-A-John and plot E1, near plot D1, across the road from B25P, across the road from A10P, and across the road from A1. Some piles are still small. Look for these piles before you dump your weeds at the garden.

Make a Garden Sketch

If you haven’t already done so, now is a great time to make a note of where you planted your vegetables so you can make plans to rotate your vegetable plants next year. Rotating where you plant your vegetables can keep disease causing fungi from building up to high levels in any one area of your garden. For example, tomatoes, potatoes, egg plant, and peppers are all in the same family. Next year, try not to plant peppers where you planted tomatoes this year, Plant something else since plants in the same family share similar disease and pest problems.

Gardening/Horticulture Assistance is Available

Do you have a gardening question? You can contact the Waukesha County Extension Horticulture Helpline by email at uwex1@waukeshacounty.gov or call 262-548-7779. Currently, calls are being answered on Tuesday and Thursday mornings from 9 a.m. until noon. If you send an email, feel free to include photos!



Questions/Contact Information

Questions? Concerns? Email Lisa at lboyer@waukeshacounty.gov or call 262-548-7775. Our office hours are from 8:00 am to 4:30 pm, Monday through Friday. Your message will be relayed to Ann Wied. You can also email Ann directly at ann.wied@wisc.edu.

Ann Wied

Consumer Horticulture Educator
UW Madison Extension
Waukesha County



Extension

UNIVERSITY OF WISCONSIN-MADISON
WAUKESHA COUNTY