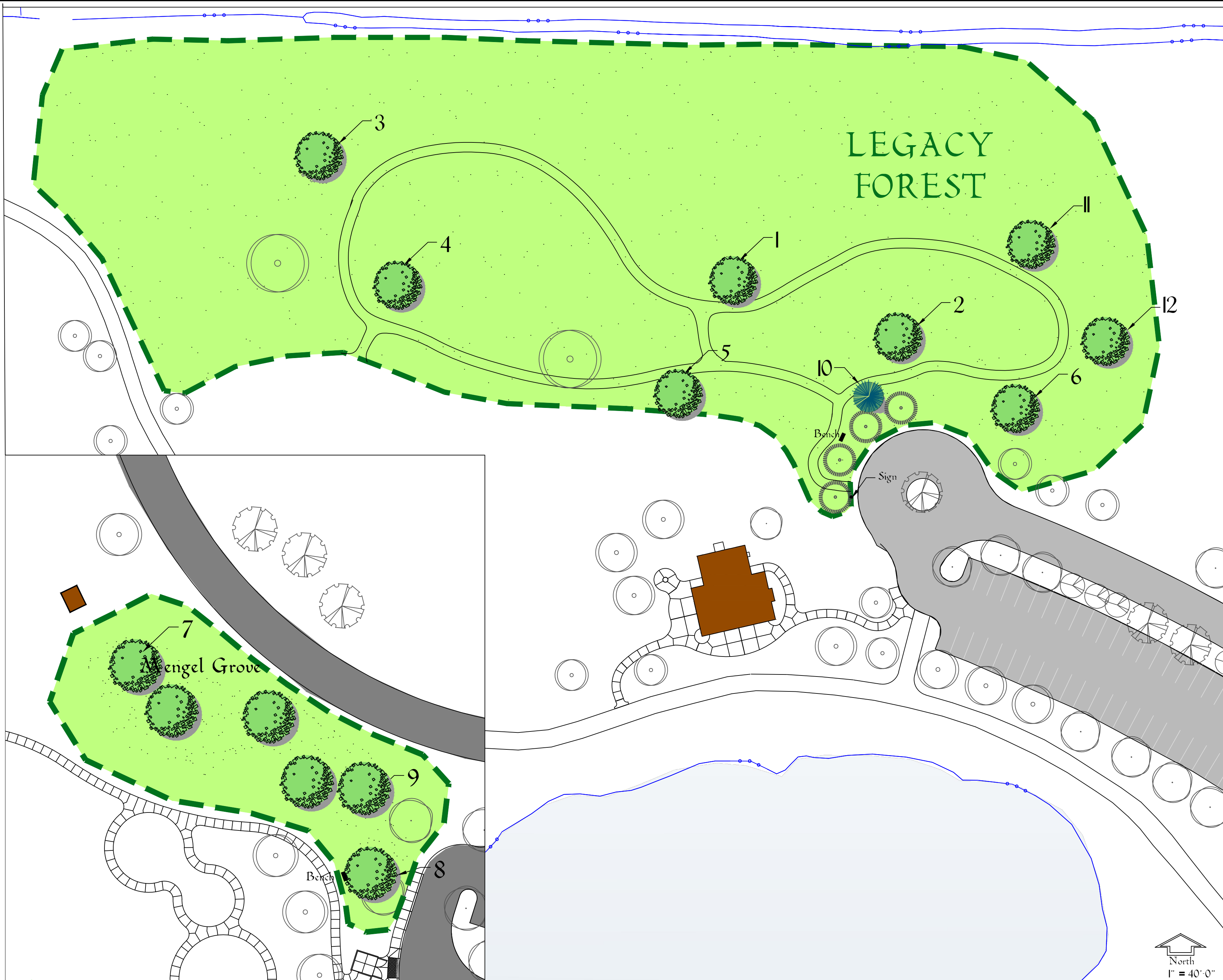


LEGACY FOREST  
FOX BROOK  
PARK  
CONTRIBUTORS



1. In Honor of: The Mace Family  
Donated by: Dept. of Parks and Land Use  
Species: Swamp White Oak  
Date: Spring 2005
2. In Honor of: David Farra  
Donated by: Fox Brook Park  
Species: Autumn Blaze Maple  
Date: Fall 2005
3. In Honor of: April Cox  
Donated by: Friends of April Cox  
Species: Swamp White Oak  
Date: Fall 2005
4. In Honor of: The Fred & Mabel Meer Family  
Donated by: Family Descendants  
Species: Swamp White Oak  
Date: Spring 2008
5. In Honor of: Maurice E. Mace  
Donated by: Dick and David Mace  
Species: Bur Oak  
Date: Fall 2008
6. In Honor of: Ann Evanich Jaeger  
Donated by: Mary Evanich  
Species: Sugar Maple  
Date: Spring 2009
7. In Honor of: Phil Mengel  
Donated by: Graham Clark  
Species: Common Hackberry  
Date: Spring 2009
8. In Honor of: Phil Mengel  
Donated by: Waukesha County HR  
Species: Amur Cork Tree  
Date: Spring 2009
9. In Honor of: Phil Mengel  
Donated by: Friends of Phil Mengel  
Species: Autumn Blaze Maple Grove  
Date: Spring 2009
10. In Honor of: Travis D. Jordan  
Donated by: Waukesha County Employee  
Memorial Program  
Species: White Pine  
Date: Summer 2012
11. In Honor of: Donald Hahn  
Donated by: Reid Branson & Kathy Hahn  
Species: Swamp White Oak  
Date: Fall 2013
12. In Honor of: Jeannette Hahn  
Donated by: Reid Branson & Kathy Hahn  
Species: Sugar Maple  
Date: Fall 2013

LEGACY FOREST  
FOX BROOK PARK

