

Amphibian Larvae

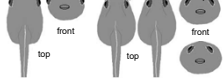


Spring Peeper
Pseudacris crucifer
total length: 1.3 inches



Spring Peeper eyes lateral (stick out past edge of head)

other species eyes dorsal (never stick out past edge of head)



American Toad
Anaxyrus americanus
total length: 0.9 inches

Gray Treefrog
Hyla versicolor
total length: 1.3 inches



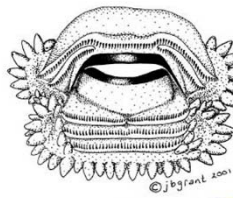
Different color phases, depend on predators

Frog Tadpole

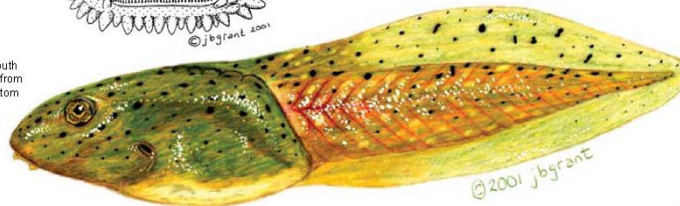
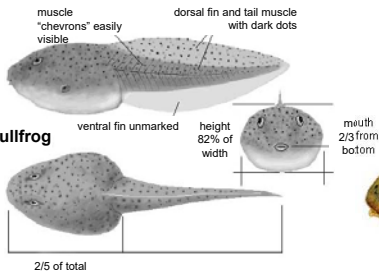
- gills hidden in gill pouches
- rear legs develop before front legs
- herbivorous



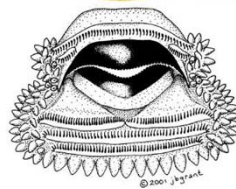
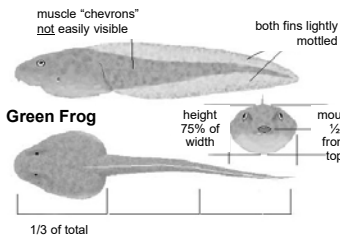
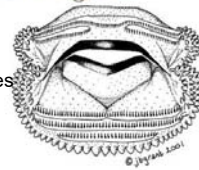
W. Chorus Frog
Pseudacris triseriata
total length: 1.2 inches



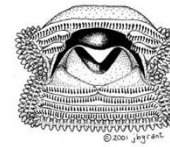
Bullfrog
Lithobates catesbeianus
total length: 6 inches



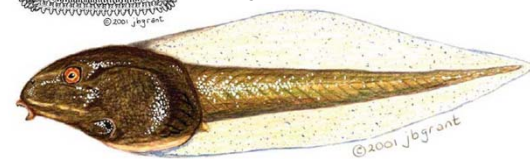
Leopard Frog
Lithobates pipiens
total length: 1.8- 3.3 inches



Green Frog
Lithobates clamitans
total length: 3.5 inches



Wood Frog
Lithobates sylvatica
total length: 1.8 inches



Tiger Salamander
Ambystoma tigrinum
size at hatching: 0.6 inches
size at metamorphosis: 4 inches

Spotted Salamander
Ambystoma maculatum
size at hatching: 0.6 inches
size at metamorphosis: 2.1 inches



Blue-Spotted Salamander
Ambystoma laterale
size at hatching: 0.35 inches
size at metamorphosis: 2 inches

Eastern Newt
Notophthalmus viridescens
size at hatching: 0.3 inches
size at metamorphosis: 1.2 inches



Salamander Larva

- external gills
- front legs develop before rear legs
- carnivorous