



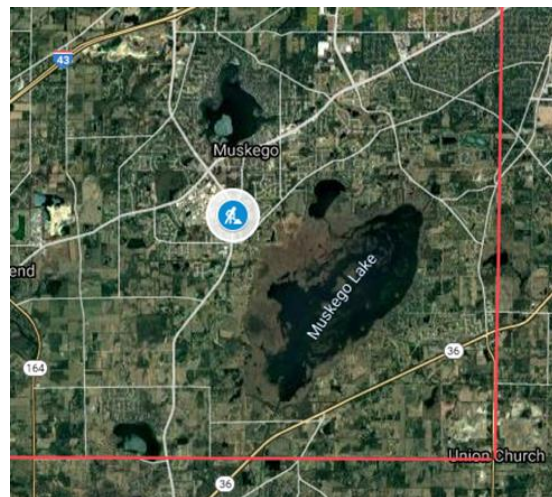
Project Update: January 23, 2020

## County Trunk Highway Y • Racine Avenue Pilak Creek Tributary structure

Muskego

Waukesha County is planning the replacement of the existing drainage structure on County Trunk Highway Y (Racine Avenue) over a tributary to Pilak Creek. It is located just south of Pioneer Drive in the City of Muskego.

The existing structure consists of two large steel culvert pipes. With the project, the structure will be replaced with two six-foot diameter reinforced concrete culvert pipes.



1. The project will require the **closure of CTH Y**.
2. **A detour** is tentatively set to follow CTH L to STH 164 to STH 36.
3. Construction start is anticipated **late summer** (prior to the start of school).
4. Project duration is estimated at **4-6 weeks**.
5. Limited **land acquisition** is expected to be required for completion of this project.

**Coming soon:** Construction schedule and duration to be finalized and announced.