



2722-08-01

County Highway O • Moorland Rd

National Ave (County Highway ES) to Cleveland Ave (County Highway D)
City of New Berlin

Project Overview

In 2021, Waukesha County will begin a study of Moorland Road between CTH ES (National Avenue and CTH D (Cleveland Avenue) in the City of New Berlin. The transportation improvement is being studied to address growing local and regional traffic volumes, and to enhance traffic flow and safety.

This 1.3-mile project involves

- pavement replacement of the existing roadway core of Moorland Road
- bring project area up to current safety standards

Additional improvements may include

- reconfiguring intersections to improve safety and lane capacity,
- replacing traffic signals,
- minor grading,
- storm water improvements,
- investigating the feasibility of including sidewalks and bicycle accommodations on one or both sides of the roadway.

Access to businesses and residential properties adjacent to Moorland Road **will be maintained during construction.**

Project Funding

Reconstructing this segment of Moorland Road is part of Waukesha County's capital program and uses Wisconsin Department of Transportation's (WisDOT) "Surface Transportation Program – Urban" (STP-U), which allows federal funding for a wide range of transportation-related activities, including projects on higher-function local roads not on the State Trunk Highway system and local safety improvements.

On a STP-U project, Waukesha County, WisDOT, and the Federal Highway Administration coordinate and review design and construction. All entities have committed funds to design and construction. Also, City of New Berlin will participate in funding requested amenities for the project that may include sidewalks, street lighting, or other features.

Anticipated Schedule

Summer 2021 to August 2024

2022

2023

Spring 2023

December 2024

Spring 2025

Data Gathering and Design

Public Involvement Meeting #1

Public Involvement Meeting #2

Real Estate Acquisition

Project LET

Construction

Project Contacts

Ed Hinrichs, P.E.

Project Manager

Waukesha County

262-548-7740

EHinrichs@WaukeshaCounty.gov

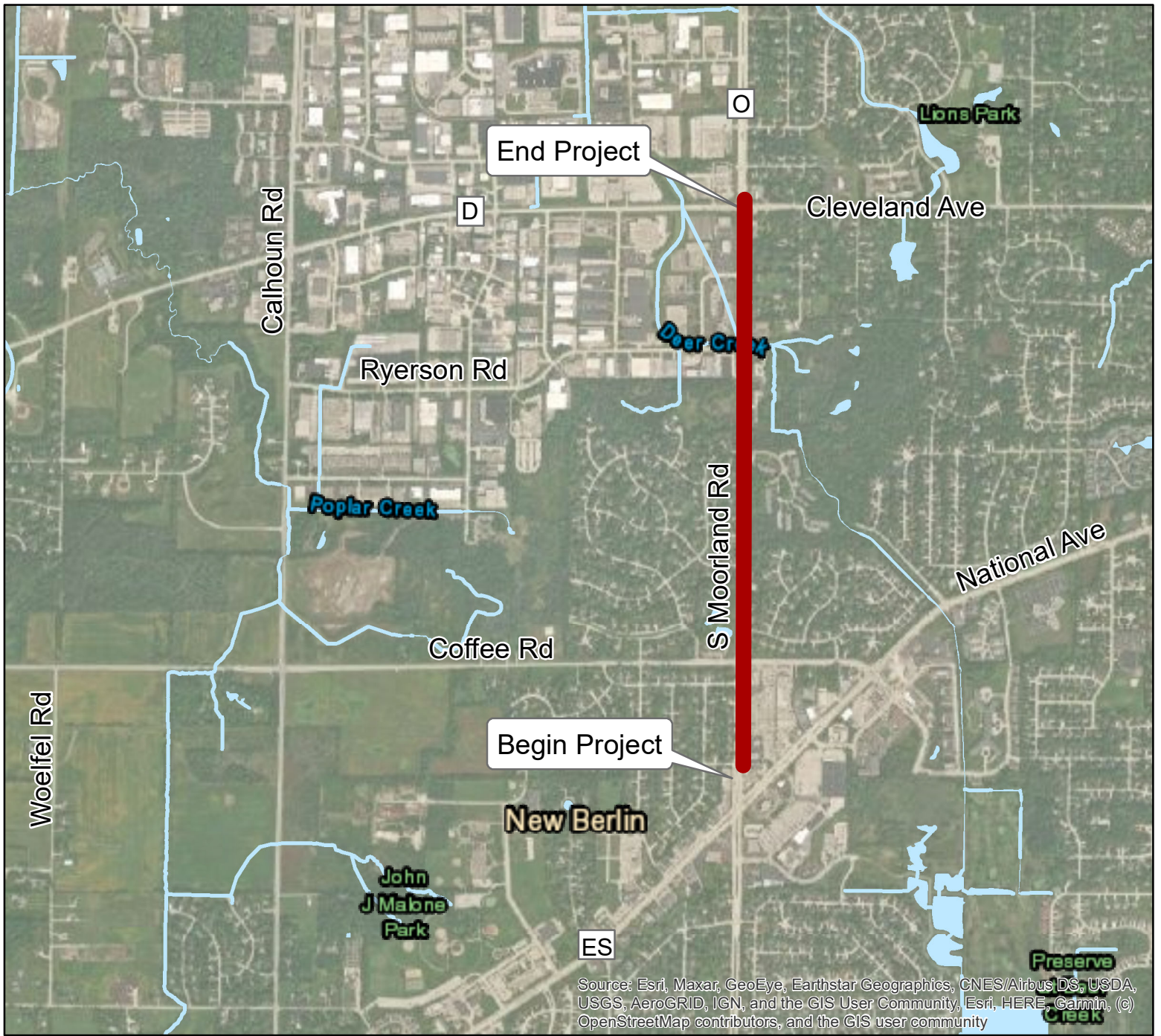
William Schilling, P.E.

Project Manager

AECOM

414-944-6080

Bill.Schilling@aecom.com



**Exhibit 2:
 Project Location Map (Project Area)
 CTH O (Moorland Road)
 CTH ES to CTH D
 Local Street
 Project ID 2722-08-01**

