

Highway Construction Erosion Control Roundtable

Tracy Pinkowski, PE, PH
Regional Stormwater & Erosion Control Engineer

2023 Waukesha County Stormwater Workshop



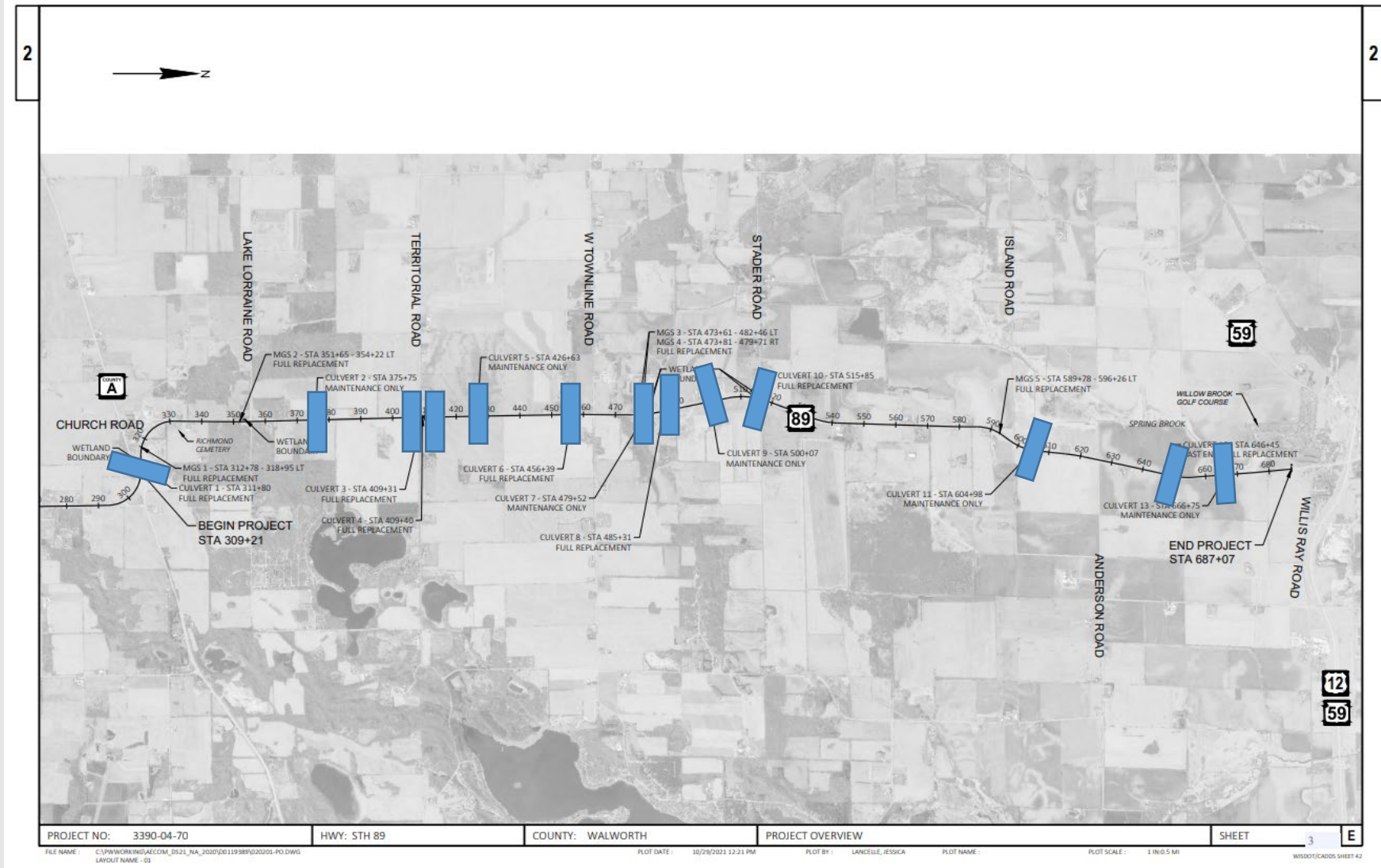
Challenges of Highway Construction versus Site Development

- Many discharge points on a project
- Work is on structures conveying stormwater
- Work in or adjacent to important environmental and/or recreational resources
- Increased cost \$\$\$
- Increased planning during design and construction
- Increased monitoring and maintenance
- **COMMUNICATION!!!**



Typical Project

- Many discharge points on a project
- Example: STH 89, ~7 miles, 13 cross culverts



Bridges and Culverts



- Work is on structures conveying stormwater
- Example: Covered Bridge Road near historic structure

I-41/45 over Underwood Creek, Wauwatosa ACOE Civil Works Project

- **Work in or adjacent to important environmental resources**
- **Equipment needs for traversing resource**



I-43 over the Milwaukee River, Glendale

- Work in or adjacent to important environmental and recreational resources



West Calumet Road Bridge over the Little Menomonee River, Milwaukee

- **Work in or adjacent to important environmental resources... observed salmon migration**



Increased Cost \$\$\$

- Innovative solutions can be costly
- Length of project can increase costs



Increased Cost \$\$\$

- Complexity of project increases cost
- Example: I-43 Fish Creek Box Culvert



I-43 at Headwaters of Fish Creek, Mequon

- **Increased planning during both design and construction**
- **Sometimes mother nature wins!**



• Increased monitoring and maintenance



- Started out good.....

- Fabric delivered??? But, not actually installed.....



The best plans don't work unless you have



COMMUNICATION!!!



Tracy Pinkowski, PE, PH

Regional Stormwater & Erosion Control Engineer

Division of Transportation System Development – Southeast Region
Technical Services Section - Environmental Unit

- Tracy.Pinkowski@dot.wi.gov
- Office: 262-548-6761
- Cell: 414-750-7510

