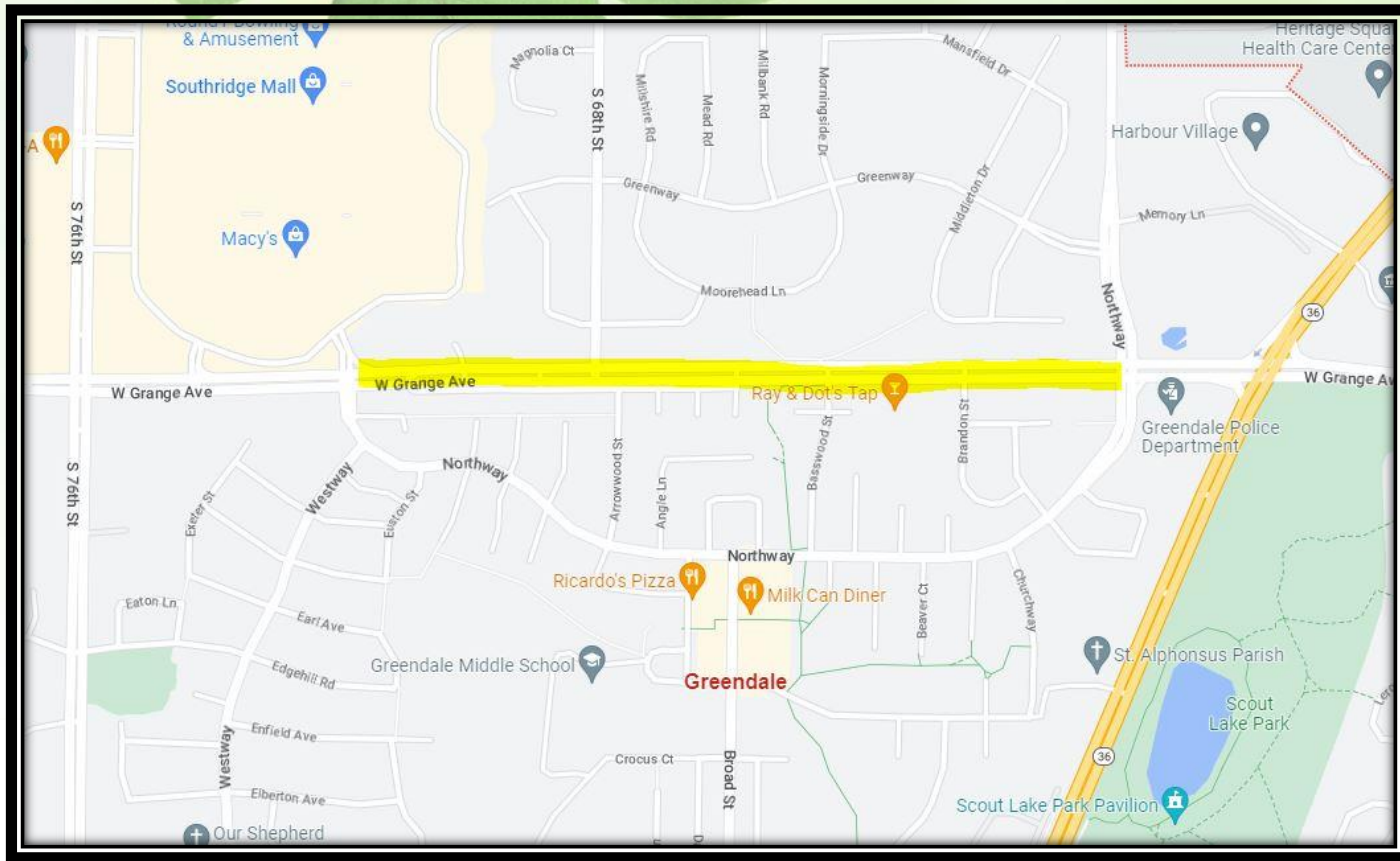
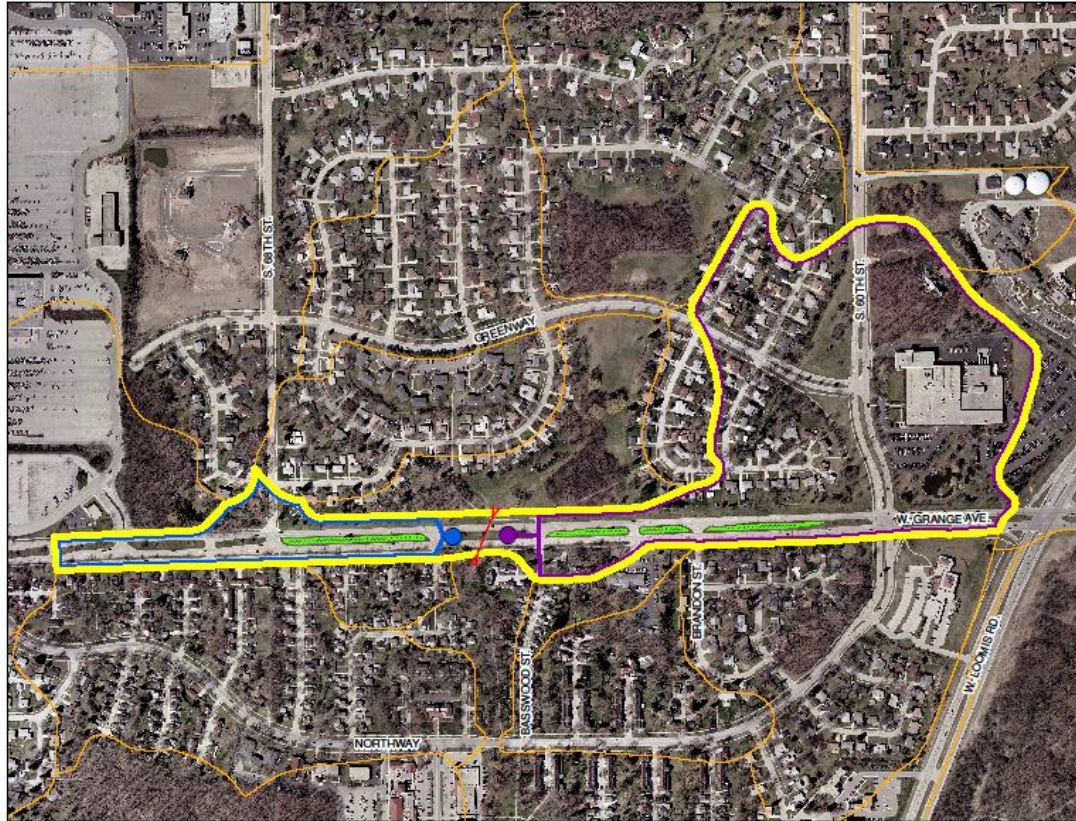


Grange Avenue Bioswales

Greendale, WI



Greendale Bioswales



Bioinfiltration Basins in Grange Avenue Medians
Total project area – 50.94 acres

Greendale Bioswales

Bioinfiltration Basins in Grange Ave Medians

6 ft storm sewer depth

0.64 acres of bioswales

41 curb openings

Maximum ponding depth of 12"

6" underdrains connect to storm sewer

36" aggregate storage layer

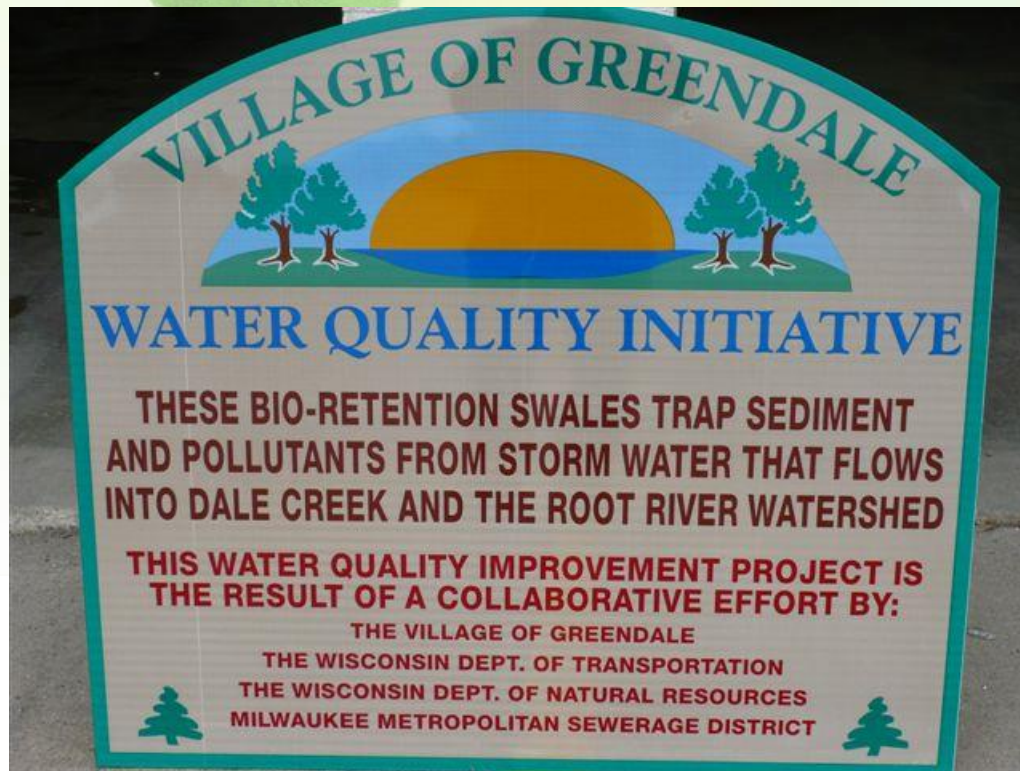
Removes 770 lbs of TSS annually

Greendale Bioswales

Bioinfiltration Basin Life Expectancy of 10-20 yrs

Contingent on proper maintenance

Total bioswale cost - \$212,000 (+-\$151 / sq ft)



Greendale Bioswales



Greendale Bioswales



Greendale Bioswales



Greendale Bioswales



Greendale Bioswales



Greendale Bioswales

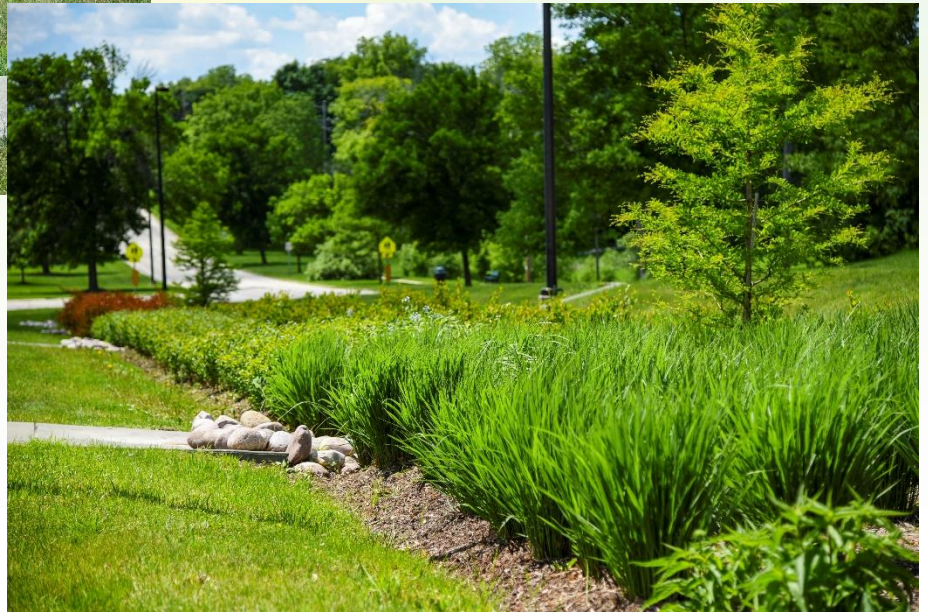
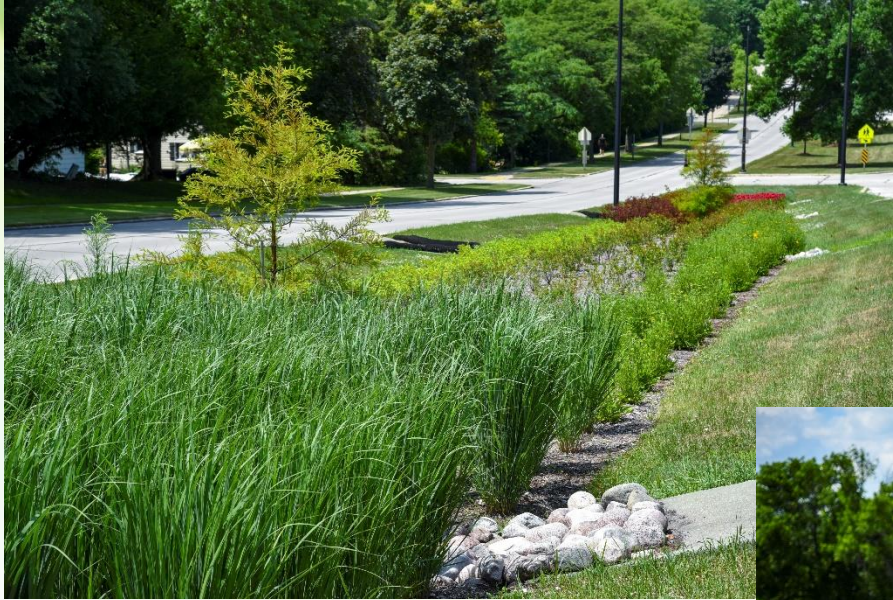


Keep it simple and bold
Easier to maintain

Greendale Bioswales



Greendale Bioswales



Greendale Bioswales



Greendale Bioswales

AREA 1					
Plant Type	Qty	Size	Cost / Ea	SF	Total
Perennials	742	4 1/2"	\$16		\$11,872
Ornamental Grasses	85	1 GAL.	\$22		\$1,870
Low Shrubs	460	15" HT.	\$30		\$13,800
Tall Shrubs	104	3' HT.	\$62		\$6,448
Multi-stemmed Tree	2	2 1/2" CAL.	\$492		\$984
Mulch	88	2.5" thick/CY	\$61		\$5,368
Total Cost of AREA 1					\$40,342
Total SF of Area 1				11425	
Average Cost per SF		SF	\$3.53		
AREA 2 Total Cost		SF	\$3.53	5531	\$19,524
AREA 3 Total Cost		SF	\$3.53	3340	\$11,790
AREA 4 Total Cost		SF	\$3.53	7502	\$26,482
TOTAL FOR ALL AREAS					\$98,139

Questions?

Tom Mortensen, PLA, ASLA
Site Planner / Landscape Architect
raSmith

tom.mortensen@rasmith.com