

## Planning for your program

Thank you for choosing Retzer Nature Center for your environmental education experience! Our staff and teaching naturalists take great pride in the programs we offer.

**Please read the following information to better prepare your group for an outing at the Nature Center.**

**Weather:** Hikes take place regardless of the weather. If weather is severe, an alternate indoor program will be given. Programs cannot be rescheduled or refunded because of weather.

### **Chaperones Required :**

- ≤ 10 students - 2 chaperones
- 11-20 students - 3 chaperones
- 21-30 students - 4 chaperones
- 31-40 students - 5 chaperones Etc.

**Lunches:** We offer 2 picnic areas (patio & pines) during the fall and spring for your group's use. If you wish to eat lunch here, please include this in your reservations. Only reserved groups can be accommodated. Appropriate behavior and clean up is your responsibility.

**Preparation:** Instruct your students and chaperones to dress for the weather forecast. This is Wisconsin, so be prepared for any changes that can occur. Insect repellent is recommended in the warm months. Inform chaperones ahead of time that they will be responsible for maintaining appropriate and cooperative behavior. It is helpful to prepare students with the following:

1. Listen carefully and follow directions
2. Stay with assigned group and naturalist
3. Picking or destroying plants is not allowed
4. Be respectful of people and the land.

**Transportation:** Please visit our website or call to get directions to the Nature Center.

## Retzer Nature Center Fees

### **Programs at Retzer Nature Center:**

*(3 week lead time required)*

<u>Students</u>	<u>1 Hour</u>	<u>2 Hours</u>	<u>Add. 30 Mins.</u>
1-10	\$20.00	\$40.00	\$15.00
11-15	\$30.00	\$60.00	\$22.50
16-20	\$40.00	\$80.00	\$30.00
21-25	\$50.00	\$100.00	\$37.50
26-30	\$60.00	\$120.00	\$45.00
31-35	\$70.00	\$140.00	\$52.50
36-40	\$80.00	\$160.00	\$60.00
41-45	\$90.00	\$180.00	\$67.50
46-50	\$100.00	\$200.00	\$75.00
Etc.	Etc.	Etc.	Etc.

### **Traveling Programs:**

*(30 students maximum per program.)*

**Please see the above fee rates.**

### **Additional Round Trip Mileage Charge for Traveling Programs:**

<u>Miles</u>	<u>Charge</u>
< 10	\$ 5.00
11-20	\$10.00
21-30	\$15.00
31-40	\$20.00
41-50	\$25.00
Etc.	Etc.

### **Snowshoes Rental (per pair)**

**\$5.50 for half day**

**\$9.00 for full day**

### **Water Resource Center**

Water study and testing equipment for teachers, community groups, and citizen monitors.

**Call for additional information.**

**8/09**



## **Retzer Environmental Learning Center**

## **Education Programs 09-10 School Year**

### **Our philosophy:**

At Retzer Nature Center, our goal is to teach students the workings of the local land system while they strive to make personal connections to nature. Such an approach is the best way to foster an early understanding and appreciation for the land, one that will last a lifetime.

### **Our approach:**

We use a two-layer teaching approach in all of our programs. First we use a hands-on activity that encourages students to touch, smell, listen to, and observe the natural world around them. Naturalists then take this opportunity to interpret and expand on specific ecological concepts.

### **Retzer Nature Center**

S14 W28167 Madison Street

Waukesha, WI 53188

(262) 896-8007

Fax: (262) 896-6822

**Program Reservations: (262) 548-7801**

*Yours Naturally!*



Waukesha County Park System  
Recreation • Education • Preservation

Waukesha County  
Department of Parks and Land Use,  
Park System Division

[www.waukeshacountyparks.com](http://www.waukeshacountyparks.com)

## Cancellation Policy:

A three week lead-time is required to book all programs. Because your program has been specifically booked for your group (date, program, time, etc.), fees must be paid 21 days before program date. When booking a program 21 days before the program date, payment is due at the time of booking. (We do accept MasterCard and Visa over the phone.) If payment is not received 21 days or more before your program date, the program will be cancelled.

If you cancel your program less than 21 days before program date, we reserve the right to forfeit the whole program fee, or issue credit on account instead of refunding money. Credit on account must be redeemed within the same calendar year unless otherwise noted.



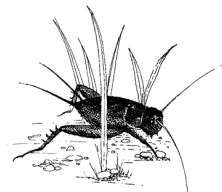
## Seasonal Programs:

### **Catchable Critters-A Study of Insects** (Available Sept., Oct., May and June)

#### **Grades 2-8**

Students will “sweep” down and under during this hands-on adventure exploring the wild habitats of our 6-legged friends.

*2 hours*



### **Explore the Prairie** (Available Sept. & Oct.)

#### **Grades 1-6**

The beautiful autumn prairie is a place of wonder and discovery! Students study plants, root systems, soil, and insects as they sweep through the prairie and uncover its secrets. Older students will learn the basics of botany, and further their understanding of the prairie as a community.

*Grades 1-3: 1 hour*

*Grades 4-6: 2 hours*

### **The Life of Plants** (Available Sept., Oct. & April to early June)

#### **Grades 3-5**

Piece together the mystery of the role that plants have in ecosystems. Take a close look at plants from roots to seeds. Then explore soils, habitats and the relationships plants have with animals with this indoor/outdoor program.

*2 hours*

### **Winter Wildlife** (Available Dec. thru Feb.)

#### **Grades 1-12**

Animals leave behind a number of clues for us to find as we explore our winter world. Start indoors with a slideshow on animal tracks and evidence of their adventures, then venture outdoors to hunt for some of these winter clues.

*Class size limited to snowshoes available*

*2 hour program without snowshoes*

*2.5 hour program with snowshoes\**

*\*Snowshoe rental fee \$2.75/person during class*

### **I Spy the Pond!** (Available May to June)

#### **Grades K-3**

Explore a water world through an interactive game of “I Spy”. Meet the cool creatures who call the muck home in a pond. Learn about the adaptations and features they have to live in this watery world.

*1 hour*

*1.5 hours includes Pond Web of Life game*

### **Explore the Pond** (Available May to June)

#### **Grades 4-8**

Students investigate pond ecology through observation, temperature readings, and an in-depth study of aquatic organisms. Conclude your program with our fun interactive Biodiversity game. Mud Risk: High (come prepared)

*Limit 30 students*

*2 hours*

## 30 Minute Add-On Activities:

**Not available for Storytime Hikes**

### **Create-a-Critter**

#### **Grades K-5**

Create a make-believe critter using the components of habitat: water, food, shelter, and space. Let your imagination run wild!

### **Owl Pellet Dissection**

#### **Grades 1-10**

Take apart an owl pellet and reconstruct its most recent meal! This is a fascinating way to study owl adaptations.

### **Web of Life**

#### **Grades K-6**

Make physical connections between living things within a common eco-system and watch as a web of life emerges! Game will relate to the main program.

## Year-Round Programs at Retzer Nature Center:

### Outdoor Hikes:

#### **Nature Storytime Hike**

**Grades Pre-K (age 4) - 1**

This program is all about reading and roaming! Teachers will select a month's storytime program and our naturalists will conduct an outdoor nature hike designed to complement the theme.

**(See Nature Storytime topics below)**

*1 hour without craft*

*1.5 hour with craft*

#### **Nature Discovery**

**Grades Pre-K (age 4)-5**

This program blends sensory exploration with an exciting nature collection hike. Naturalists serve as guides and interpreters while students seek out natural treasures.

*Grades Pre K-3: 1 hour*

*Grades 4-6: 2 hours*



#### **Animal Survival**

**Grades 1-3**

Explore wildlife habitats from the viewpoint of the animals. You'll need to consider issues of water, cover, food, and space and decide just who could survive in a given habitat.

*2 hours*

#### **Wilderness Explorers**

**Grades 4-8**

In this creative program, students assume the roles of explorers experiencing the Wisconsin wilderness for the very first time. How did they survive in the woods and prairies of Wisconsin?

*2 hours*



#### **GPS- Finding Your Way**

**Grades 6-8**

GPS is a powerful tool that can help you find your way anywhere in the world. Learn basic techniques in this indoor/outdoor classroom with hands on discovery.

*3 hours*

*Limit 30 students*

#### **Reading the Landscape**

**Grades 6-12**

Learn to read the land around you. Students work in teams to investigate different study areas, using field equipment and observation to uncover the fascinating relationships within our local ecology.

*2 hours*

## Retzer Indoor Talks

or

## In School Program

#### **Animal Adaptations**

**Grades 1-8**

*(In-school - 30 students maximum)*

Enjoy a visit from the Retzer teaching animals! See how an animal's physical and behavioral traits can help it to survive, as we explore the concepts of habitat and adaptation.

*1 hour*

### In School Program Only

#### **Nature Tales**

**Grades Pre K (age 4)- 1**

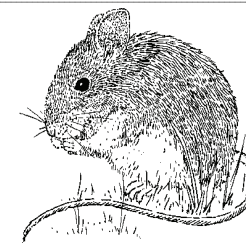
*(30 students max per session)*

Have one of our naturalists visit your school, bringing a variety of hands-on nature objects for your students to explore. All Nature Tales programs include a children's book and craft centered around a theme from nature.

**(See Nature Tales topics below)**

*1 hour*

There is a 30 student maximum per session for in-school programs



# Nature Storytime & Nature Tales (In-school program) Topics!

*Grades Pre K (age 4) - 1*

## September

### **Spiders, Slugs, Bugs, and Ughs**

Pill bugs, slugs, spiders, and more! Dig in the dirt to discover the world of crawly creatures.

## October

### **Turtle Time**

Learn more about the life of a box turtle. See where and how she spends her days. What does she eat? Where does she hide?

## November

### **Gathering Time**

The fall is here and it's gathering time! All of the animals are making plans, and each has something of value to offer.

## December

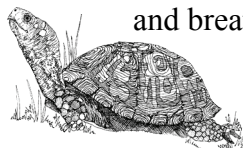
### **Time to Sleep**

Learn more about hibernation as we read cozy stories about animals in winter.

## January

### **Footprints in the Snow**

Winter is here and someone has left footprints in the snow. Whose could they be? Learn about the secret tracks and signs they leave behind.



## February

### **Fine Feathered Friends**

Explore the world of our fine feathered friends as we look at nests, feathers and

## March

### **Sunset Switch**

What happens to the animals when the sun goes down? Learn all about this mysterious time.

## April

### **Spring Has Sprung!**

This program is a celebration of Spring! Explore the signs of life in Spring.

## May

### **A Day in the Life of a Worm**

Learn what your life would be like as a worm. Touch and explore these composting creatures.

## June

### **Hip Hopping Frogs**

Discover what life is like for our aquatic friend the frog. How does a frog eat, sleep and breathe in it's wet world?

## Retzer Nature Center & Charles Horwitz Planetarium Co-Op Programs

**Consider combining these two  
education facilities with specially  
designed programs**

*3.25 hour Flip Flop program  
1.5 hour sessions with 15 minute break*

### **Amazing Day-Night Adventures**

#### **Grades K-2**

Learn about the sun and moon in this interactive program. Animal behavior and interaction between day and night time explorers.

### **Life Here or There—Alien Encounter**

#### **Grades 3-4**

Discover the interaction of life on Earth and the conditions needed for life to exist on other planets.

### **Explorers of Land & Space**

#### **Grades 5-6**

Using the skills of an explorer, learn how to survive in uncharted territories by gathering clues and information about the surrounding lands.

*\*Dress for the weather*