

A close-up photograph of a movie theater seat with red upholstery. In the foreground, a white bowl is filled with popcorn. Behind it, a red cup with a white lid and a white straw is visible. The background shows the rows of theater seats receding into the distance.

# Coming Soon to a Download or Web Map Near You

Waukesha County Lidar and Imagery Products Preview



# SEWRPC Relationship

- Projects cover the 7 (now 6) County region
- Runs imagery and elevation acquisition projects including pre-flight planning and QC
- Creates cost-sharing partnerships with agencies such as MMSD, USGS, WI DOT, We Energies
- WROC statewide program - enhanced pricing models and standardized acquisition practices.
- Creates derivative products such as contours and Mr SID files.



# Imagery Acquisition



- 2026 Flight taking off soon
- Same 3" color pixel specs as our 2024
- Delivery generally comes by the end of the year for these projects including Mr Sid files

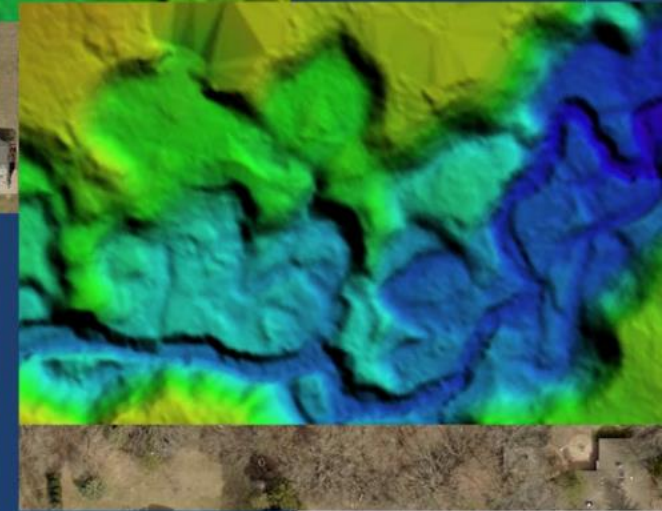
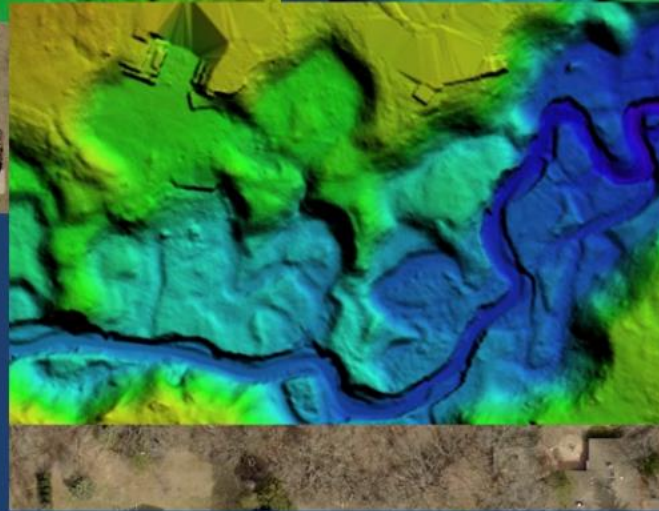
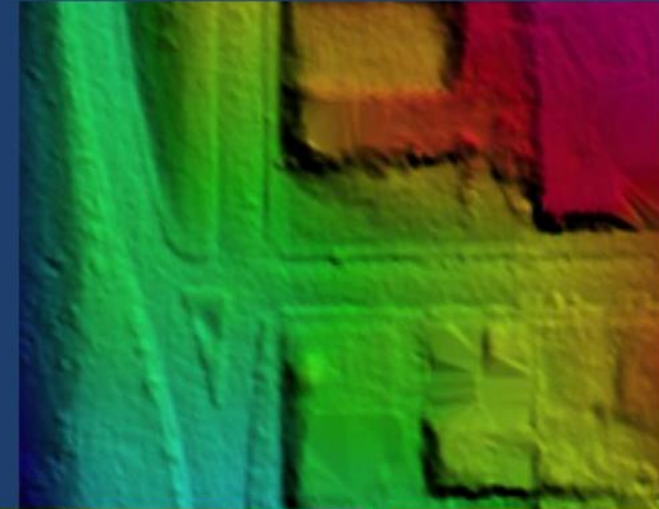


# Base Project

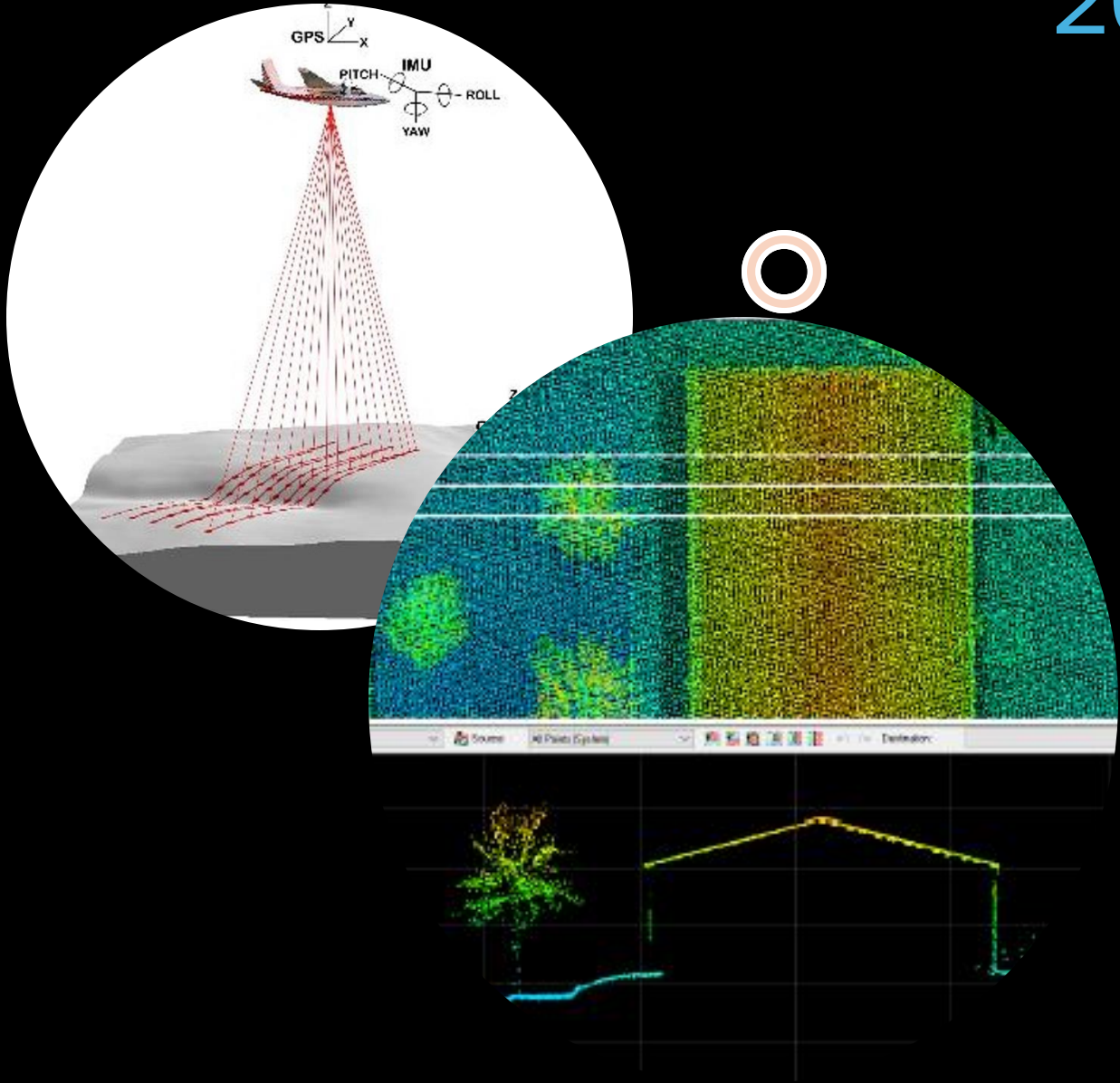
2020

2015

- 30ppsm Lidar acquisition
- Ground Control
- Deliverables
  - Classified LAS
  - Bare Earth 1ft DEM
  - 100 ft streams
  - 2-acre pond Hydro
  - Metadata
  - 1 ft Contours (SEWRPC provided)
- SEWRPC will deliver data to USGS



# 2025 Lidar Flight



- Flown in mid-late April 2025
- Increased Hydrology Breaklines to make an improved water layer for the County in 2026-2027
- 8' and greater streams + 1-acre ponds



# Where are we at now?

- Because USGS partners with funds for their 3DEP program, they get a crack at QC
- 90 day turnaround estimate due to cuts in staff
- Once returned, SEWRPC will deliver data and then derivative products
- County will begin the upload process to our Amazon S3 buckets.



# How to get it



# WaukeshaCounty.gov

## GIS Link on Front Page

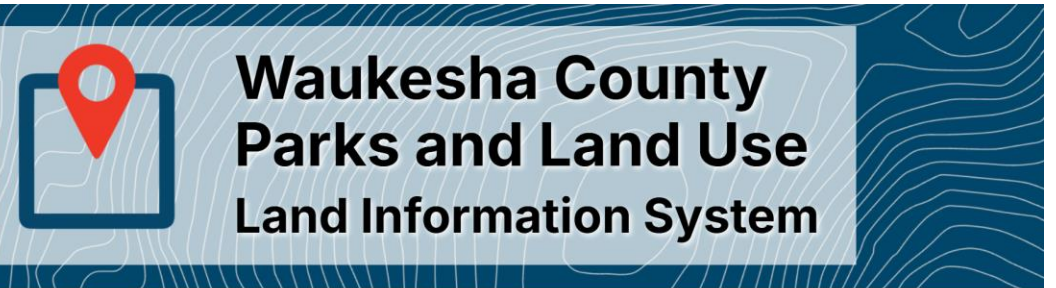


**GEOGRAPHIC INFORMATION  
SYSTEMS (GIS) MAPS**

Click to view our collection of inter-  
active GIS Maps.



## Open Data Portal



**Welcome!**

To start exploring GIS data, choose an option below.



LIS Hub



Interactive Map



Open Data Portal

# How to get it



Land Information System Open Data Site



**WAUKESHA COUNTY**  
**Land Information System**

Open Data Site

Search for Data



## Elevation and Imagery Data Download By PLSS

This site allows for browsing,  
querying and downloading...

Explore



Section: 13

Zoom to

- Download 2015 unclassified las file
- Download 2015 classified las file
- Download 2015 bare earth las file
- Download 2012 point cloud las file
- Download 2015 Contours DWG file



## The must do items

- Digital Elevation Model (DEM), Digital Surface Model (DSM)
- Hillshade raster
- Contour Lines
- Updates to water polygons/lines

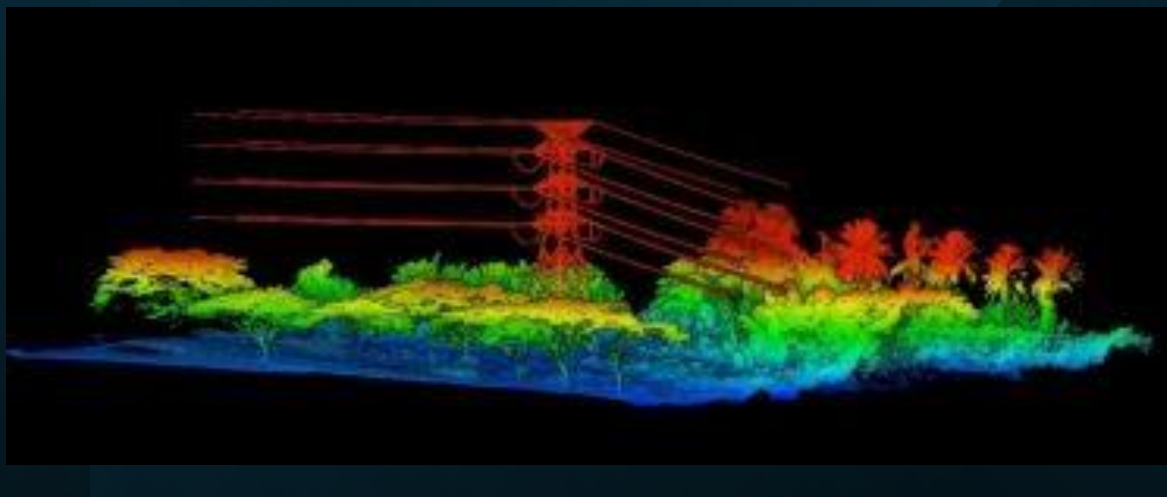
## Things we're exploring

- Machine learning classification to extract:
  - Building footprints
  - Impervious surfaces
- Culvert locations
- "Raindrop" and Profile and Viewshed Creation apps
- Floodplain education
- Solar analysis
- ??????

What else are we going to do with all this data?



Questions?



## Kim Meinert

Waukesha County Land Information Office

[KMeinert@waukeshacounty.gov](mailto:KMeinert@waukeshacounty.gov)

Or

[Landinformation@waukeshacounty.gov](mailto:Landinformation@waukeshacounty.gov)

<https://www.waukeshacounty.gov/parks-and-land-use/land-information-system/>