



CTH Z (Northey Rd to Scuppernong Creek) Project

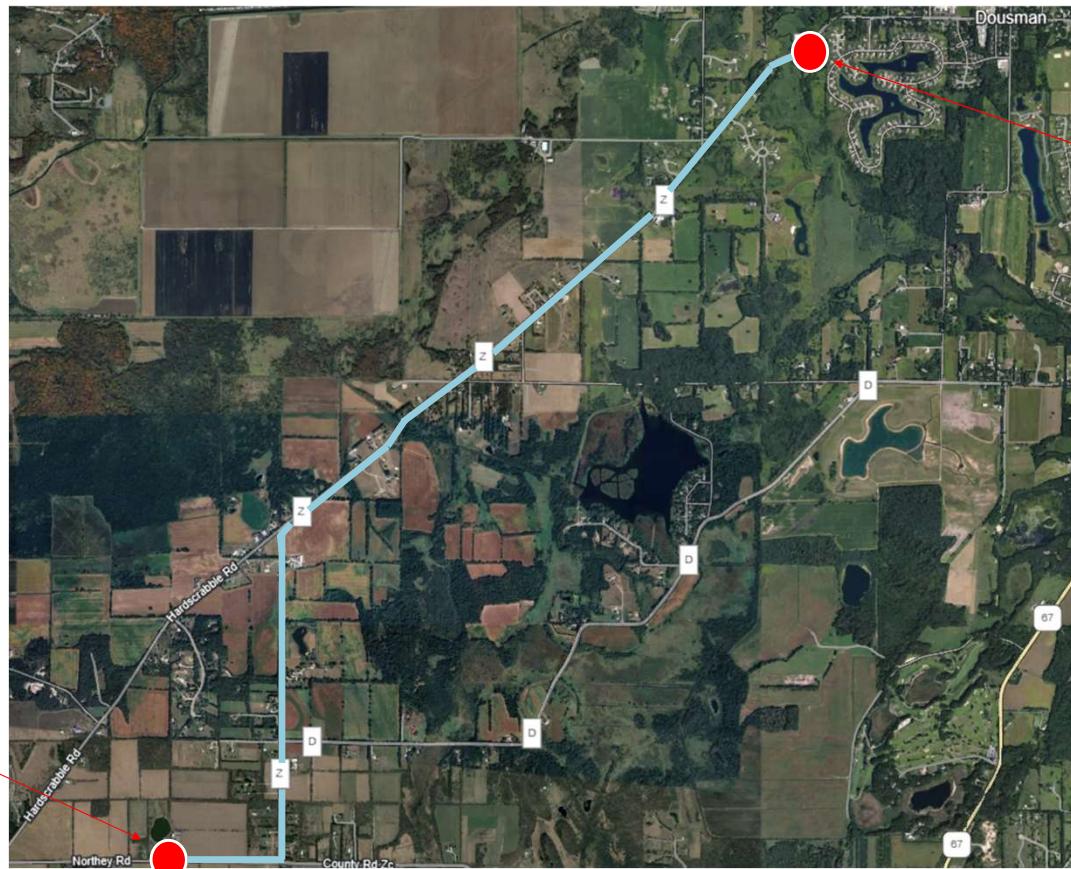
High Risk Rural Roads Program

July 16th, 2025



Study Limits

Northey Road



Scuppernong Creek

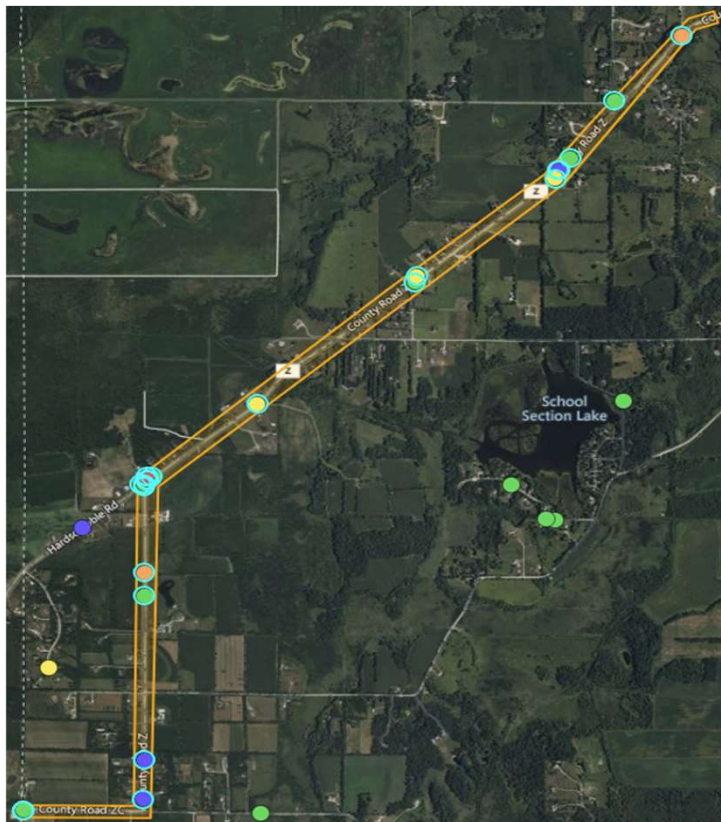
HSIP-HRRRP Program

- **The High Risk Rural Road Program (HRRRP) is a part of the broader Highway Safety Improvement Program (HSIP)**
- **HRRRP projects are intended to employ low-cost countermeasures to correct hazardous run-off-the-road (ROR) situations**
- **HRRRP countermeasures are meant to target ROR crash types, no intersection improvements are eligible for this program**

WisDOT Safety Evaluation

- **The Corridor Safety Evaluation Summary (CSE) is done by a WisDOT consultant and lists the recommended eligible safety treatments on a targeted corridor**
- **A Horizontal Curve Safety Analysis was also executed to determine the crash rate on CTH Z at Hardscrabble Road over a 5-year period**

Crash Analysis on CTH Z

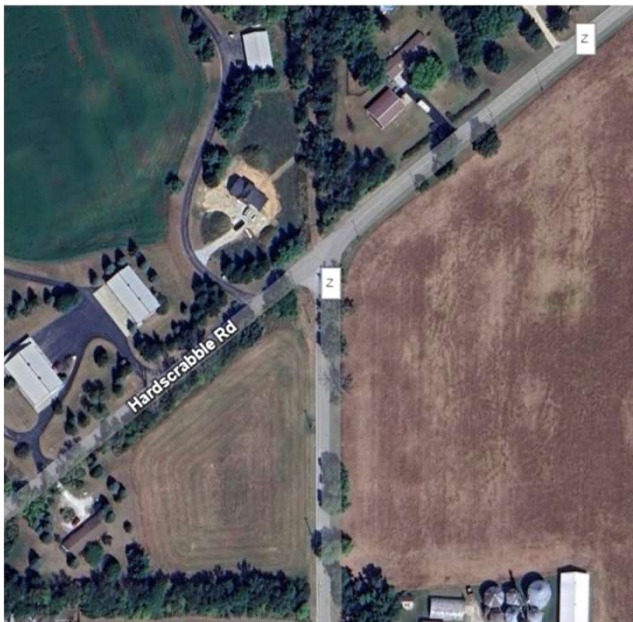


2017 – 2021 CORRIDOR CHARACTERISTICS	
Average AADT	710
AADT Range	710
Length / Speed Limit	4.83 mi / 55 mph
Annual VMT	1,252,000
Total ROR crashes	11
ROR Crash density	2.28 crashes per mile
ROR Crash rate	176 crashes per HMVMT
ROR KAB crashes	5
ROR KAB density	1.04 crashes per mile
ROR KAB crash rate	80 crashes per HMVMT
ROR KAB ratio	45%

	Severity	Queried	Mapped	Selected
✓	K	95	94	1
✓	A	573	568	3
✓	B	3133	3105	3
✓	C	3843	3814	3
✓	O	22181	22040	12
Total		29825	29621	22



Crash Analysis on CTH Z (Hardscrabble Intersection)



TOTAL CRASHES (5 YRS): 6

AVG. CRASHES/YEAR: 1.2

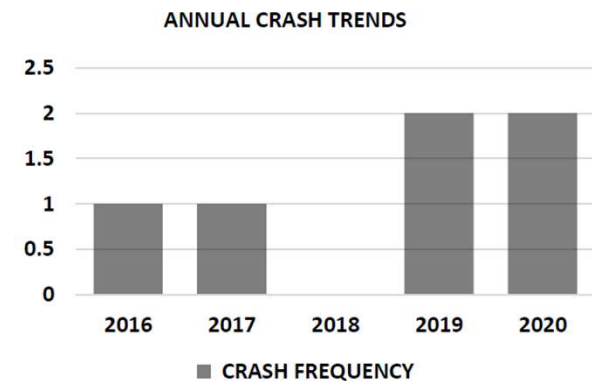
CRASH RATE: 1.99 per MEV

KAB CRASH RATE: 0.66 per MEV

ECONOMIC LOSS*: \$ 1,411,200

ROR ECONOMIC LOSS*: \$ 1,400,400

*KA=\$684K, B=\$217K, C=\$123K, PDO=\$10.8K



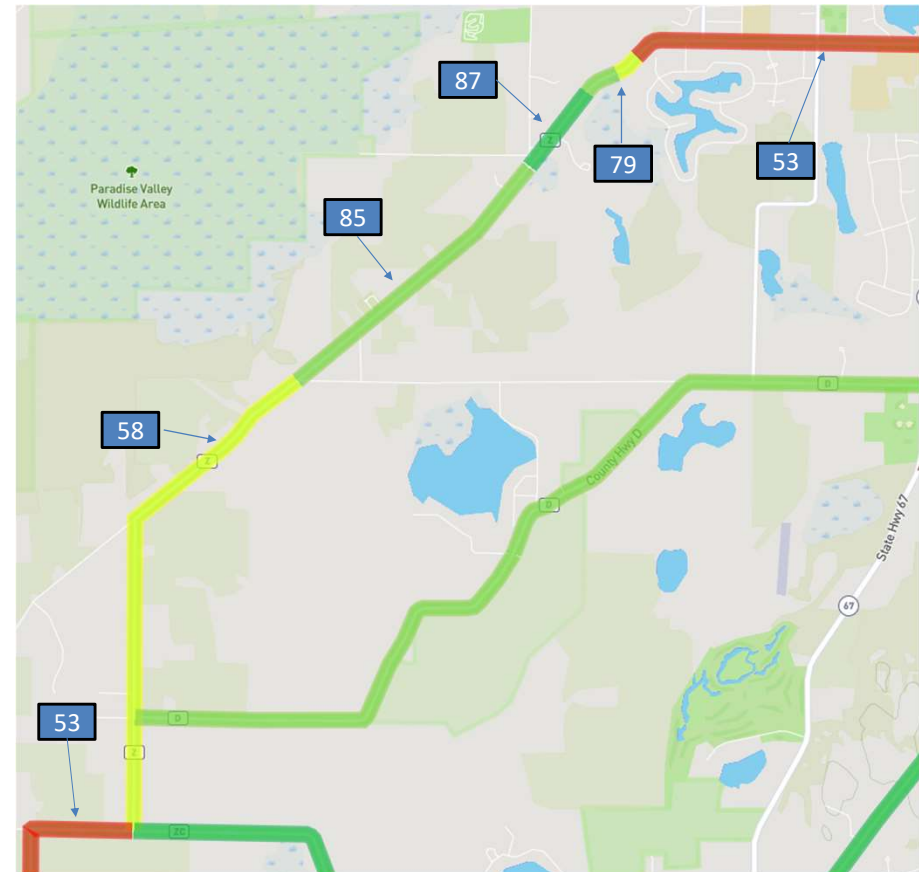
CRASH TYPES	K	A	B	C	PDO	TOT.	ECON. LOSS
ROR Tree	1	1	0	0	0	2	\$ 1,368,000
ROR Ditch	0	0	0	0	2	2	\$ 21,600
ROR Fixed-Object	0	0	0	0	1	1	\$ 10,800
Right-Angle	0	0	0	0	1	1	\$ 10,800

YEAR	K	A	B	C	PDO	TOT.	ECON. LOSS
2016	0	0	0	0	1	1	\$ 10,800
2017	1	0	0	0	0	1	\$ 684,000
2018	0	0	0	0	0	0	\$ -
2019	0	1	0	0	1	2	\$ 694,800
2020	0	0	0	0	2	2	\$ 21,600
TOTAL	1	1	0	0	4	6	\$ 1,411,200

K = Fatal, A = Incapacitating Injury, B = Non-Incapacitating Injury,
C = Possible Injury, PDO = Property Damage Only

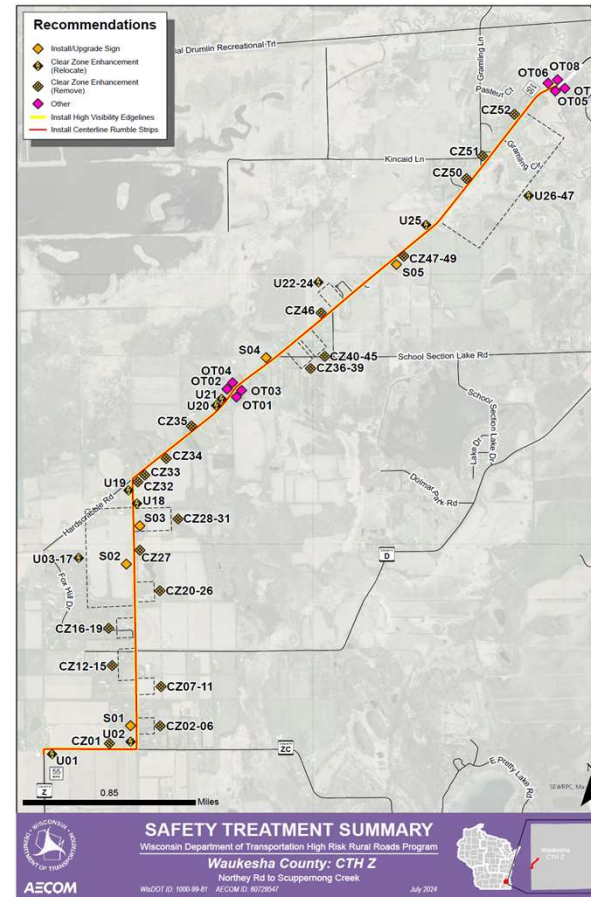
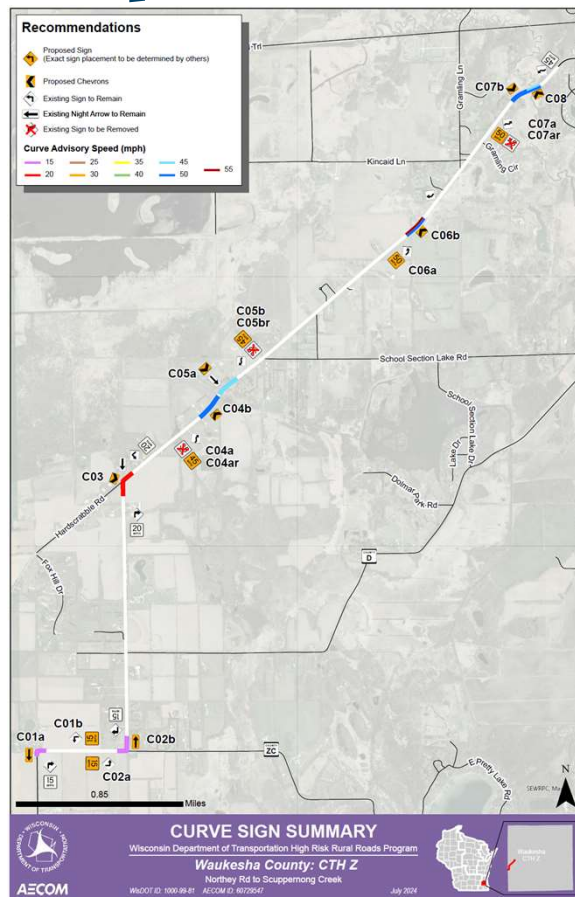
Pavement Condition

PCI Ratings	Pavement Condition
85-100	Very Good to Excellent
70-85	Good
55-70	Fair
40-55	Poor
25-40	Very Poor
10-25	Serious
0-10	Failed



Proposed Improvements

- Curve Ahead Signs
- Advisory Speed Signs
- Chevrons



- Centerline Rumble strips
- High Visibility Edgelines
- Relocating Utility Poles, TBD
- Removing Trees and Vegetation

Proposed Improvements

- **County Funded Repaving**
- **Mill and fill along corridor**
- **Improved rumble strip inclusion**



Funding

- All HRRRP projects are subject to the 90-10 federal-local funding splits
- Design and construction costs are eligible to receive HRRRP funding
- Waukesha County application, August 2025
- Construction 2029, subject to federal funding approval



Public Input

☐ Questions, Feedback, Issues & Concerns...