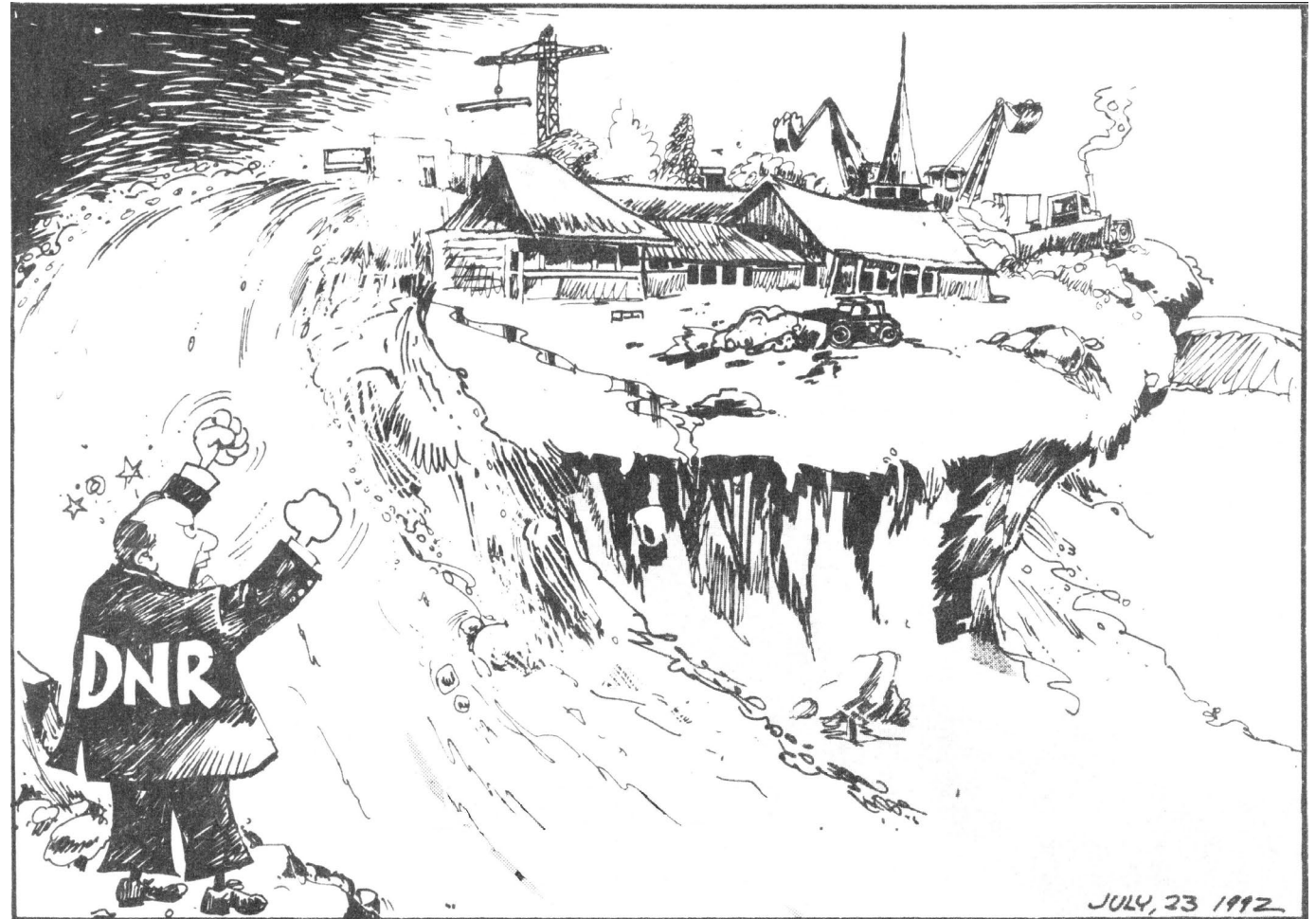


DNR Storm Water Program Updates 2025

Topics

- Guidance Updates
- Technical Standard Updates
- MS4 Updates



Guidance

Post-Construction Modeling Guidance

- Biofilter media
- Street length data entry
- Use and modeling of vegetated filter strips



MS4 Swale Modeling Guidance

- Criteria for swales, infiltration basins and dry detention basins
- Swale infiltration rate field testing



Technical Standards

Dry Pond Technical Standard

- Ready for public review and comment very soon!



Sand Filter

- Ready for public review and comment very soon!



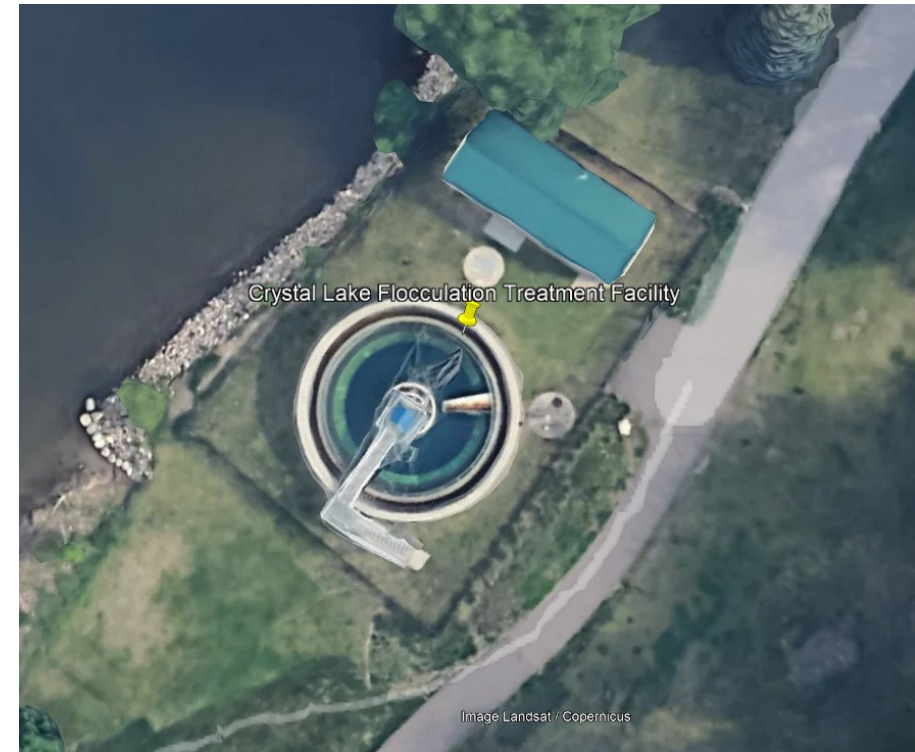
Sand Filter Technical Note



Draft Technical Standard 1013

Flow-Weighted Coagulant Dosing of Storm Water Wet Detention Ponds

- Pond inlet treatment
- Wastewater treatment concept
- High TSS capture in limited space
- High TP capture-includes more dissolved P



Robbinsdale, Minnesota
Photo from Google Earth™

Draft Technical Standard 1014

Episodic Aluminum-Based Coagulant Dosing for Maintenance of Storm Water Wet Detention Ponds


- Pond surface maintenance treatment
- Lake management concept
- Reduce TP export from sediment
- Strip TSS and TP from permanent pool with each application
- Must be available sediment storage



Alliant Energy Center
Photo from Kate Brunner

What's Next?


Soil Loss & Sediment Discharge



Soil Loss & Sediment Discharge Calculation Tool

for use on Construction Sites in the State of Wisconsin

WDNR Version 2.0 (06-29-2017)



YEAR 1

Developer:

Project:

Date: 03/25/25

County: Racine

Activity (1)	Begin Date (2)	End Date (3)	Period % R (4)	Annual R Factor (5)	Sub Soil Texture (6)	Soil Erodibility K Factor (7)	Slope (%) (8)	Slope Length (ft) (9)	LS Factor (10)	Land Cover C Factor (11)	Soil loss A (tons/acre) (12)	SDF (13)	Sediment Control Practice (14)	Sediment Discharge (t/ac) (15)
Bare Ground	05/15/20	10/01/20	76.9%	130	Clay	0.32	2.0%	160	0.23	1.00	7.4	1.098	Silt Fence	4.9
Seed with Mulch or Er	10/01/20	12/01/20	7.9%	130	Clay	0.32	2.0%	160	0.23	0.10	0.1	1.098	Silt Fence	0.0
End	12/01/20						2.0%	160	0.23			0.000	Silt Fence	0.0
							2.0%	160	0.23			0.000		0.0
							2.0%	0				0.000		0.0
							0.0%	0				0.000		0.0
TOTAL											7.5		TOTAL	4.9
													% Reduction Required	NONE

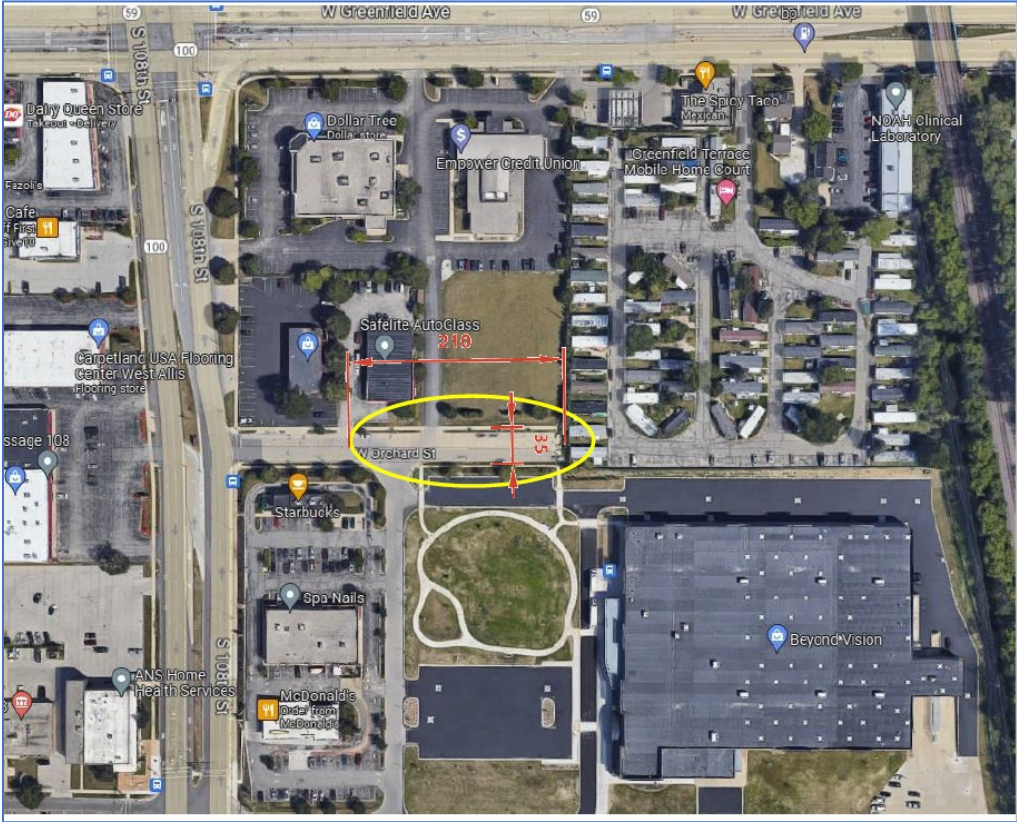
Notes:
See Help Page for further descriptions of variables and items in drop-down boxes.
The last land disturbing activity on each sheet must be 'End'. This is either 12 months from the start of construction or final stabilization.
For periods of construction that exceed 12 months, please demonstrate that 5 tons/acre/year is not exceeded in any given 12 month period.

Recommended Permanent Seeding Dates:
4/1-5/15 and 8/7-8/23 Turf, introduced grasses and legumes
Thaw-6/30 Native Grasses, forbs, and legumes

NOTE: THIS TOOL ONLY ADDRESSED SOIL EROSION DUE TO SHEET FLOW. MEASURES TO CONTROL CHANNEL EROSION MAY ALSO BE REQUIRED TO MEET SEDIMENT DISCHARGE REQUIREMENTS.

Designed By:
Date:

Urban Soil Health



MS4 Update

Municipal Stormwater Compliance Issues

- Construction Site Inspections
- Street sweeping and catch basin waste management
- Long term maintenance of privately owned stormwater BMPs





2025 Audit Focus Area

Post Construction Storm Water Management Program

SER MS4 Individual Permits

- BMP Inspection and Maintenance procedures
 - Re-issued MS4 permits will include conditions that expand on this.



Big picture – BMPs must be maintained so they can function as designed and protect water quality. Describe all the steps that are needed until the BMP is maintained.



- Identify who is responsible for inspecting and maintaining BMPs.
- Develop procedure to verify BMPs are inspected and maintained as required by the long-term maintenance requirement.
- Develop procedure and associated timeframe to compel compliance with the long-term maintenance requirements.

Long-Term Maintenance Agreement Project

Topics	Tasks
Program Support	
	Develop Maintenance Agreement Model/Template
	Develop Practice Specific Inspection/Maintenance Plan Template
	Develop Practice Specific Inspection/Maintenance Documentation Form
	Develop Practice Specific Inspection/Maintenance Outreach Materials
	Develop SW Practice Inspection Contractor List
	Develop SW Practice Maintenance Contractor List
	Identify SW Practice Inspection/Maintenance Funding Sources
Existing Approaches	
	Identify current SER MS4 Programs & Procedures (including implementation)
	Review & evaluate agreements submitted with NOIs
	Review & evaluate agreements submitted with NOTs
	Identify current funding sources for inspection & maintenance
	Develop a summary of findings
Implementation Improvement	
	Identify alternative approaches for conducting inspections
	Identify alternative approaches for conducting maintenance
	Identify alternative options for funding inspection and maintenance activities
	Develop recommendations

CONNECT WITH US

Pete Wood

Peter.Wood@Wisconsin.gov



/WIDNR



@WIDNR



@WI_DNR



/WIDNRTV



"WILD WISCONSIN:
OFF THE RECORD"