

CONSTRUCTION

STAGE 1

- REMOVE TREES
- INSTALL BIRD DETERRENT SYSTEM
- CONSTRUCT TEMPORARY CROSSOVER

STAGE 2

- INSTALL EROSION CONTROL MEASURES
- CONSTRUCT B67-085
- INSTALL INLET AND STORM SEWER
- CONSTRUCT CURB AND GUTTER
- MILL AND PAVE ADJACENT TO BRIDGE APPROACH
- INSTALL GUARDRAIL AND BULL NOSE

STAGE 3

- REMOVE TEMPORARY CROSSOVER
- COMPLETE REMAINING BULL NOSE AND GUARDRAIL ITEMS ADJACENT TO EASTBOUND CTH VV
- FINAL EROSION CONTROL AND LANDSCAPING
- PLACE PERMANENT PAVEMENT MARKINGS

TRAFFIC CONTROL

STAGE 1

- TRAFFIC TO BE REDUCED TO ONE LANE IN EACH DIRECTION DURING CROSSOVER CONSTRUCTION.
- CLOSE LEFT LANE IN EACH DIRECTION.
- UTILIZE SDD TRAFFIC CONTROL, SINGLE LANE CLOSURE, DIVIDED NON-FREEWAY/EXPRESSWAY FOR THIS CLOSURE.
- PLACE PORTABLE CHANGEABLE MESSAGE SIGN 7 DAYS PRIOR TO BEGINNING CONSTRUCTION 0.5 MILES BEFORE START OF LANE CLOSURE IN EASTBOUND AND WESTBOUND DIRECTIONS. PCMS MESSAGE OR AS DIRECTED BY THE ENGINEER AS FOLLOWS:

PANEL 1:	ROAD	PANEL 2:	XXXXDAY
	WORK		XX/XX
	BEGINS		

- PLACE PORTABLE CHANGEABLE MESSAGE SIGN 0.5 MILES BEFORE START OF LANE CLOSURE IN EASTBOUND AND WESTBOUND DIRECTIONS. PCMS MESSAGE OR AS DIRECTED BY THE ENGINEER AS FOLLOWS:

PANEL 1:	LEFT	PANEL 2:	AHEAD
	LANE		0.5
	CLOSED		MILES

STAGE 2

- SHIFT WESTBOUND TRAFFIC ONTO THE CROSSOVER CONSTRUCTED IN STAGE 1 AS SHOWN IN THE PLANS.
- EASTBOUND AND WESTBOUND TRAFFIC TO BE BIDIRECTIONAL ON B67-084.
- SIDE ROAD CLOSURES ARE NECESSARY WITHIN THE LIMITS OF THE CROSSOVER.
- ALTERNATE SIDE ROADS MUST REMAIN OPEN FOR ACCESS TO BUSINESSES.
- PLACE PORTABLE CHANGEABLE MESSAGE SIGN 7 DAYS PRIOR TO BEGINNING CONSTRUCTION 0.5 MILES BEFORE START OF LANE CLOSURE IN WESTBOUND DIRECTION. PCMS MESSAGE OR AS DIRECTED BY THE ENGINEER AS FOLLOWS:

PANEL 1:	BRIDGE	PANEL 2:	XXXXDAY
	CLOSED		XX/XX
	BEGINS		

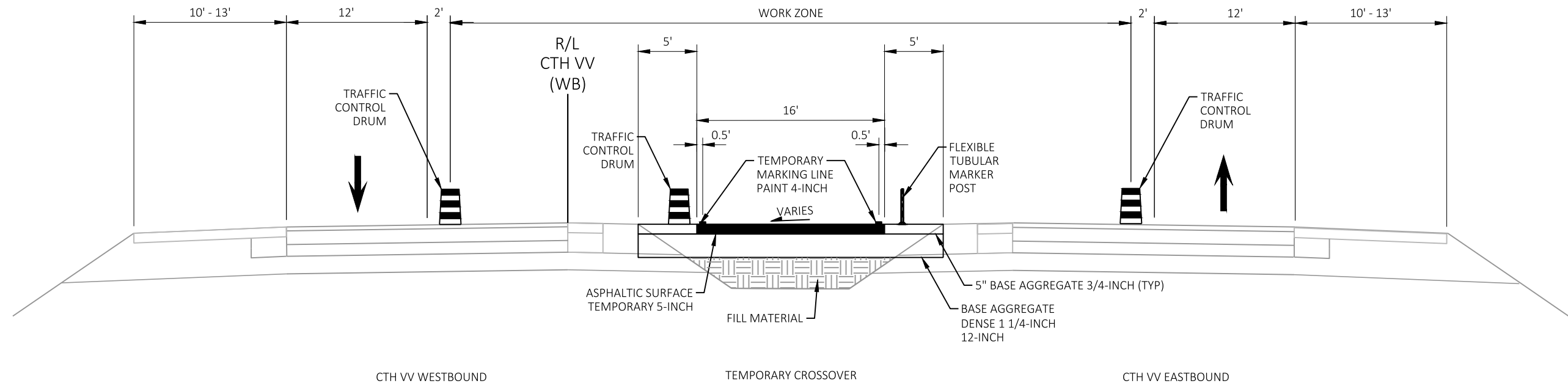
- PLACE PORTABLE CHANGEABLE MESSAGE SIGN 0.5 MILES BEFORE START OF LANE CLOSURE IN WESTBOUND DIRECTION. PCMS MESSAGE OR AS DIRECTED BY THE ENGINEER AS FOLLOWS:

PANEL 1:	BRIDGE	PANEL 2:	NEW
	CLOSED		TRAFFIC
			PATTERN

STAGE 3

- TRAFFIC TO BE REDUCED TO ONE LANE IN EACH DIRECTION DURING CROSSOVER REMOVAL.
- CLOSE LEFT LANE IN EACH DIRECTION.
- UTILIZE SDD TRAFFIC CONTROL, SINGLE LANE CLOSURE, DIVIDED NON-FREEWAY/EXPRESSWAY FOR THIS CLOSURE.
- PLACE PORTABLE CHANGEABLE MESSAGE SIGN 0.5 MILES BEFORE START OF LANE CLOSURE IN WESTBOUND DIRECTION. PCMS MESSAGE OR AS DIRECTED BY THE ENGINEER AS FOLLOWS:

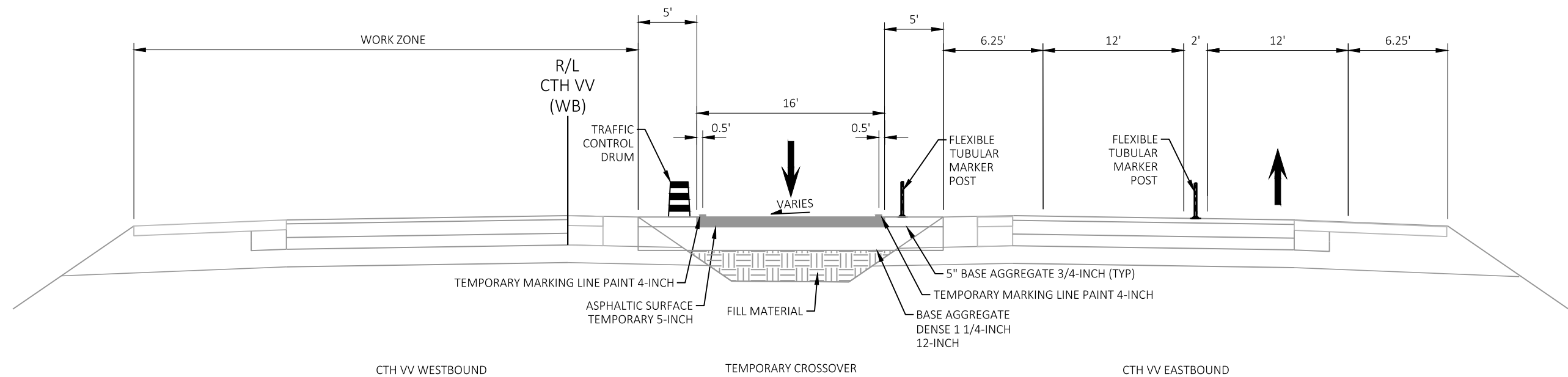
PANEL 1:	LEFT	PANEL 2:	AHEAD
	LANE		0.5
	CLOSED		MILES



TRAFFIC CONTROL STAGE 1 & 3
(EASTBOUND & WESTBOUND LEFT LANE CLOSURES)

NOTES

- TO BE USED TO CONSTRUCT AND REMOVE TEMPORARY CROSSOVERS
- OPEN LEFT LANE WHEN SAFE SLOPES ARE PRESENT AND NOT NEEDED BY CONSTRUCTION OPERATIONS
- PLACE TRAFFIC CONTROL BARRELS TO ALLOW TRAFFIC THE MAXIMUM WIDTH AVAILABLE (UNLESS ALTERNATIVE PLACEMENT IS APPROVED BY THE ENGINEER IN THE FIELD)



TRAFFIC CONTROL STAGE 2
(EASTBOUND & WESTBOUND BI-DIRECTIONAL ON EASTBOUND LANES)

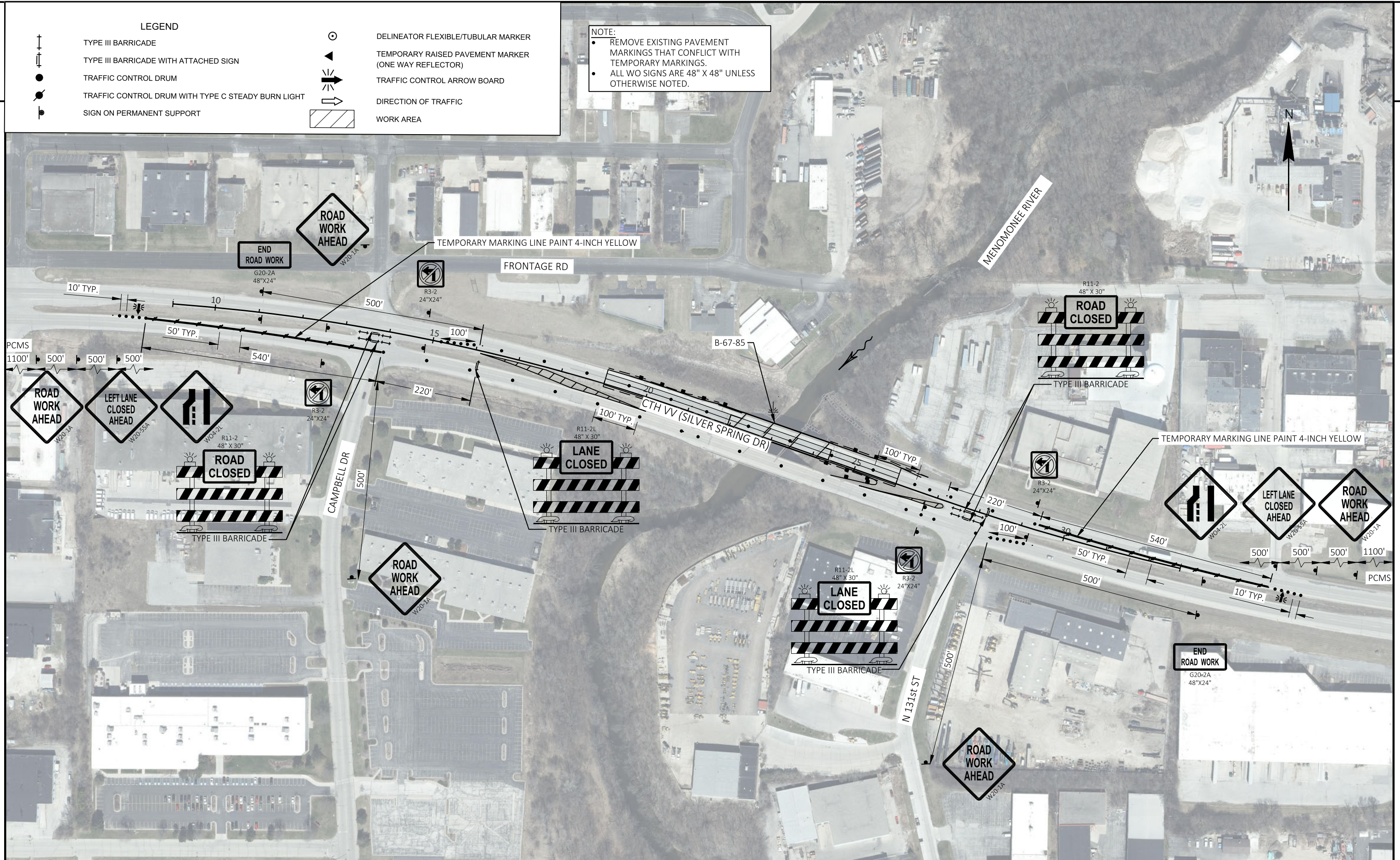
NOTES

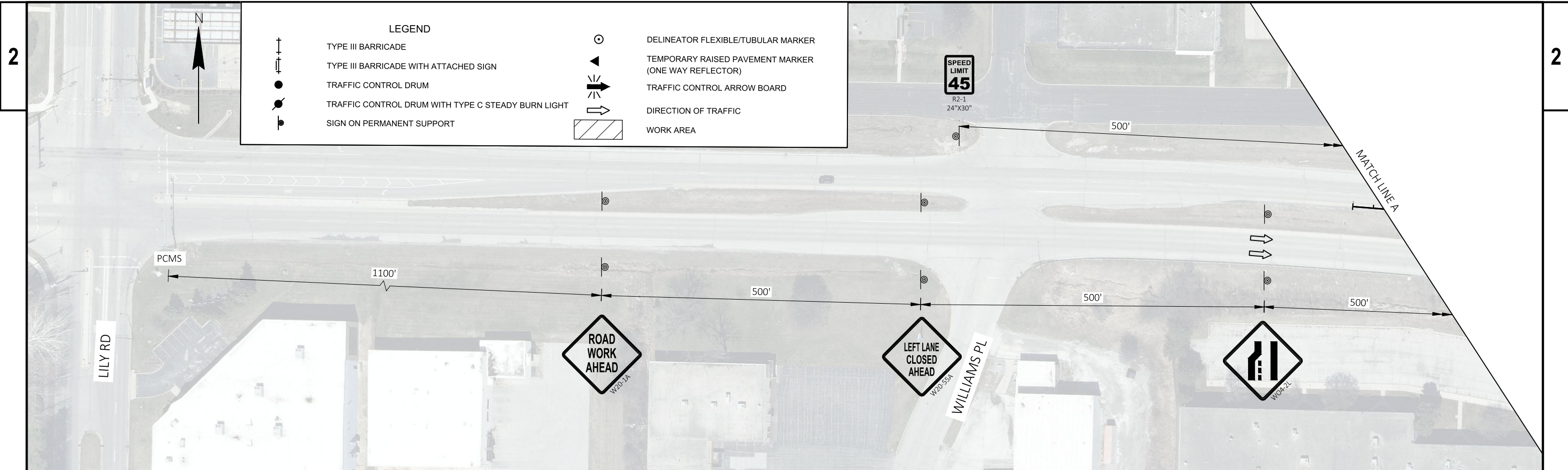
- TO BE USED FOR CONSTRUCTION OF CTH VV WESTBOUND BRIDGE

LEGEND

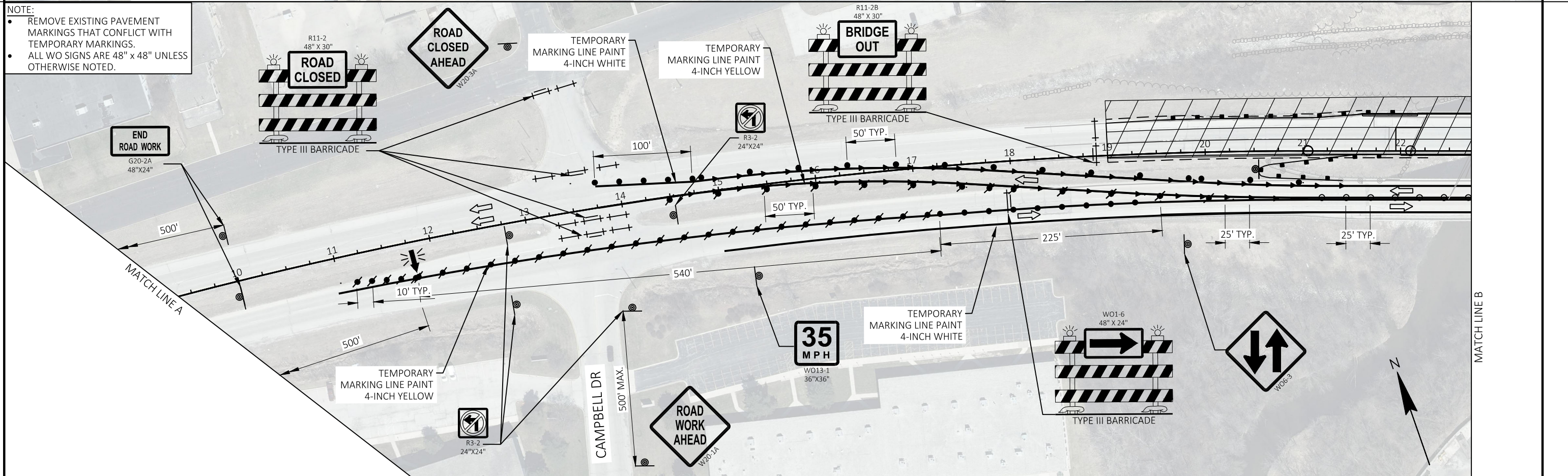
- TYPE III BARRICADE
- TYPE III BARRICADE WITH ATTACHED SIGN
- TRAFFIC CONTROL DRUM
- TRAFFIC CONTROL DRUM WITH TYPE C STEADY BURN LIGHT
- SIGN ON PERMANENT SUPPORT
- DELINEATOR FLEXIBLE/TUBULAR MARKER
- TEMPORARY RAISED PAVEMENT MARKER (ONE WAY REFLECTOR)
- TRAFFIC CONTROL ARROW BOARD
- DIRECTION OF TRAFFIC
- WORK AREA

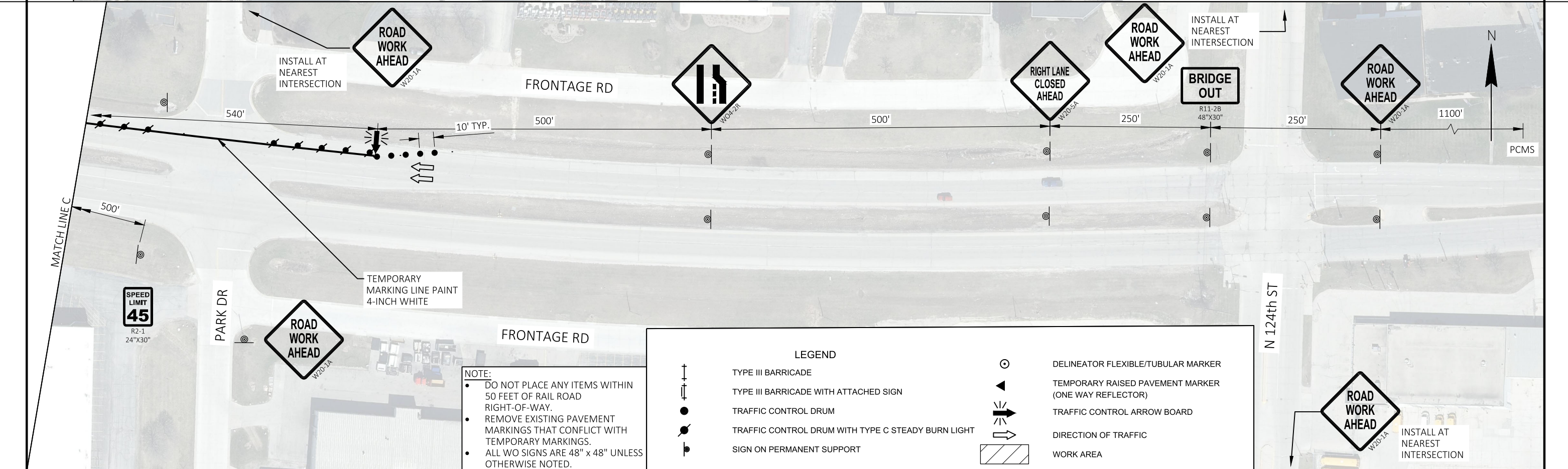
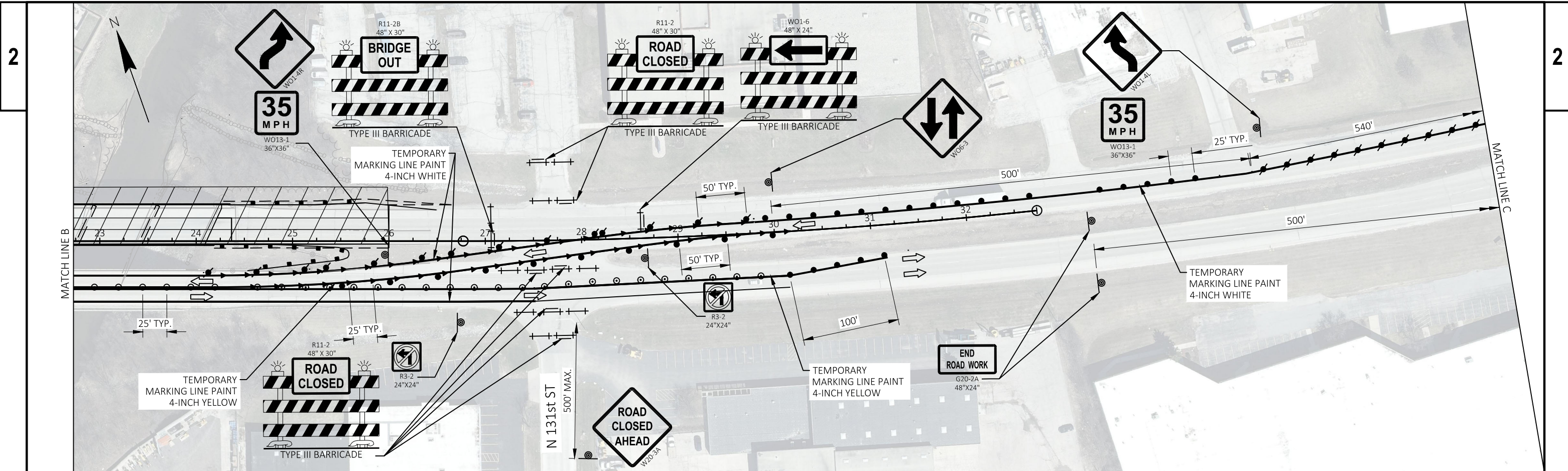
NOTE:
 • REMOVE EXISTING PAVEMENT MARKINGS THAT CONFLICT WITH TEMPORARY MARKINGS.
 • ALL WO SIGNS ARE 48" X 48" UNLESS OTHERWISE NOTED.





NOTE:
 • REMOVE EXISTING PAVEMENT MARKINGS THAT CONFLICT WITH TEMPORARY MARKINGS.
 • ALL WO SIGNS ARE 48" x 48" UNLESS OTHERWISE NOTED.





NOTE:

- DO NOT PLACE ANY ITEMS WITHIN 50 FEET OF RAIL ROAD RIGHT-OF-WAY.
- REMOVE EXISTING PAVEMENT MARKINGS THAT CONFLICT WITH TEMPORARY MARKINGS.
- ALL WO SIGNS ARE 48" x 48" UNLESS OTHERWISE NOTED.

LEGEND	
	TYPE III BARRICADE
	TYPE III BARRICADE WITH ATTACHED SIGN
	TRAFFIC CONTROL DRUM
	TRAFFIC CONTROL DRUM WITH TYPE C STEADY BURN LIGHT
	SIGN ON PERMANENT SUPPORT
	DELINEATOR FLEXIBLE/TUBULAR MARKER
	TEMPORARY RAISED PAVEMENT MARKER (ONE WAY REFLECTOR)
	TRAFFIC CONTROL ARROW BOARD
	DIRECTION OF TRAFFIC
	WORK AREA