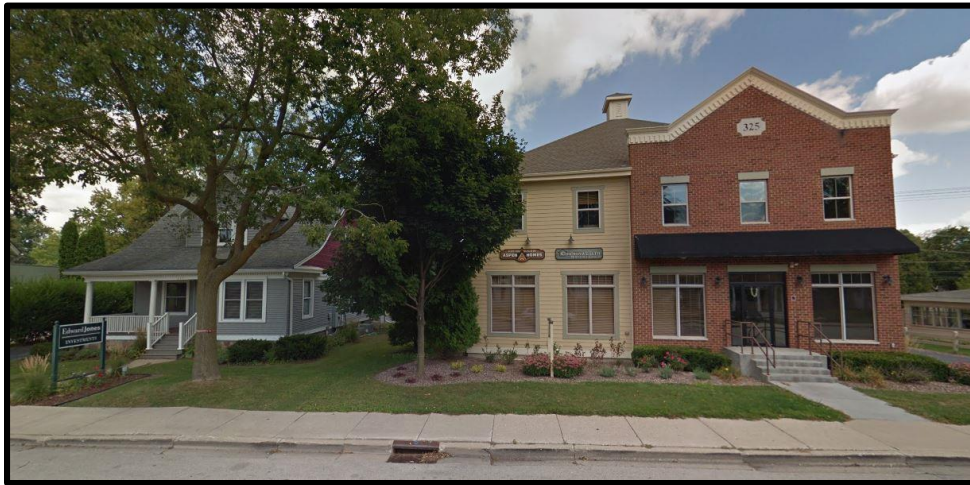


Waukesha County Height Examples
Downtown Commercial/Mixed-Use Buildings



Development Name: Oakton Development, LLC (325 Oakton Ave.)
Municipality: Village of Pewaukee
Number of Stories: 2
Height: 32' to peak of front gable (+/- 40' overall)
Roof Style: Peak (Gable/Hip)



Development Name: Tony and Mia's (515 Wells St.)
Municipality: City of Delafield
Number of Stories: 2
Height: 30'
Roof Style: Peak (Gable)



Development Name: Snail Lake, LLC (125 Wisconsin Ave.)
Municipality: Village of Pewaukee
Number of Stories: 2
Height: 39' 6"
Roof Style: Peak (Gable/Hip/Gazebo)



Development Name: Old Main Street
Municipality: Village of Pewaukee
Number of Stories: 2
Height: 36'
Roof Style: Peak (Gable/Hip) and Flat Roof



Development Name: Hartland River Walk Apartments
 Municipality: Village of Hartland
 Number of Stories: 2 (Mixed-use building, residential buildings: 3 stories)
Height: 40'
 Roof Style: Peak (Gable/Hip)



Development Name: EMANDEMCO, LLC (140 E Capitol)
 Municipality: Village of Hartland
 Number of Stories: 3
Height: +/- 30'
 Roof Style: Flat Roof



Development Name: Delafield Town Center (524 Milwaukee St.)
Municipality: City of Delafield
Number of Stories: 3
Height: 54'
Roof Style: Peak (Gable) and Flat Roof



Development Name: Mammoth Springs
Municipality: Village of Sussex
Number of Stories: 3
Height: 40' (48' to exposed lower level parking)
Roof Style: Flat Roof



Development Name: Brookfield Junction I
Municipality: City of Brookfield
Number of Stories: 3 with underground parking
Height: 36' (44' to exposed lower level parking)
Roof Style: Peak (Gable/Hip)



Development Name: Hendricks Development (603 Genesee St)
Municipality: City of Delafield
Number of Stories: 3/4
Height: 50'
Roof Style: Flat Roof

Downtown Multi-Family Buildings



Development Name: The Gateway
Municipality: City of Oconomowoc
Number of Stories: 3
Height: 42' (as viewed from the road)
Roof Style: Peak (Gable/Hip)



Development Name: Mission Lakes Phase I
Municipality: Town of Oconomowoc
Number of Stories: 3
Height: 52' (63.5' from exposed east side lower level parking)
Roof Style: Peak (Gable/Hip)



Development Name: Pewaukee Shores
Municipality: Village of Pewaukee
Number of Stories: 4 including at-grade, enclosed parking
Height: 48'
Roof Style: Peak (Gable/Mansard)



Development Name: Berkshire Oconomowoc (Senior Living Community)
Municipality: City of Oconomowoc
Number of Stories: 3/4
Height: 52'
Roof Style: Peak (Gable)



Development Name: Poplar Creek
Municipality: Town of Brookfield
Number of Stories: 4
Height: 59' 9" (71' from exposed parking)
Roof Style: Peak (Gable/Hip) and Flat Roof



Development Name: The Worthington
Municipality: City of Oconomowoc
Number of Stories: 5
Height: 60' (as viewed from the road)
Roof Style: Flat Roof



Development Name: Eagles Landing on Lac La Belle
Municipality: City of Oconomowoc
Number of Stories: 6
Height: 63' (as viewed from the road) structure is taller on the lake side
Roof Style: Flat Roof

Waukesha County Height Examples Suburban Multi-Family Buildings



Development Name: The Preserve at Prairie Creek
Municipality: City of Oconomowoc
Number of Stories: 2
Height: 32'
Roof Style: Peak (Gable)



Development Name: Wyndridge
Municipality: City of New Berlin
Number of Stories: 2 with underground parking
Height: +/- 30'
Roof Style: Peak (Gable/Hip)



Development Name: The Woodlands at North Hills
Municipality: Village of Menomonee Falls
Number of Stories: 3
Height: 48' (58' with exposed parking garage)
Roof Style: Peak (Gable/Hip)