

Comparison Communities: Height Standards

V. Pewaukee

- 42 ft. max.
- Min. 1 1/2 stories — max. 3 stories
- Modification requires a CU. Village Board ensures design and impact is compatible with immediate area and that development advances a public purpose.

V. Cedarburg: 35 ft. max.

V. Elm Grove

- B-1/B-2: 35 ft. max, not to exceed 2 stories
- B-3: 65 ft. max., must be between 3-5 stories
- Residential: 36 ft. , with exceptions
- Plan Commission can make exceptions

V. Hartland: 45 ft. max.



V. Elm Grove

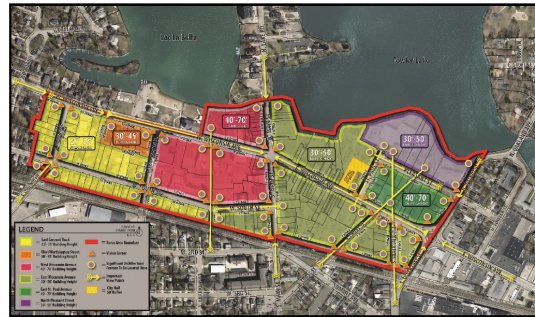
C. Waukesha

- No max. height
- Height may be limited through a CU

C. Oconomowoc

- East St. Paul Street Area (green)
 - * 70' max.; 40 ft. min.
- North Pleasant Street Area (purple)
 - * 50 ft. max.; 30 ft. min.
- East Wisconsin Ave. Area (yellow-green)
 - * 50 ft. max.; 30 ft. min.
 - * For a distance of 50 ft. from City hall, no buildings can exceed 40 ft. in height
- West Wisconsin Ave. Area (red)
 - * 70 ft. max.; 40 ft. min.
- West Worthington Street Area (orange)
 - * 45 ft. max; 30 ft. min.
- East Concord Road Area (yellow)
 - * 35 ft. max; 25 ft. min.

DOWNTOWN DESIGN OVERLAY MAP



Red Zone, C. Oconomowoc

C. Brookfield

- Min. 2 stories — max. 3 stories
- Architectural features exempt

V. Mt. Horeb

- Min. 2 stories
- Central Bus.: 50 ft. max./20 ft. min.
- Main St.: 40 ft. max./20 ft. min.



C. Brookfield