

ENROLLED ORDINANCE 175-88

APPROVE NEW PARKING REGULATION FOR COUNTY TRUNK HIGHWAY ES  
(MAIN STREET) IN THE VILLAGE OF MUKWONAGO

WHEREAS, the parking, standing and stopping of vehicles along county trunk highways can have a detrimental effect upon highway capacity and safety; and

WHEREAS, a prohibited parking area provides safe visibility of traffic conditions for motorists; and

WHEREAS, Section 349.13 of the Wisconsin Statutes provides that local authorities may regulate the parking, standing and stopping of vehicles along such highways.


THE COUNTY BOARD OF SUPERVISORS OF THE COUNTY OF WAUKESHA ORDAINS the following parking regulation shall be in effect upon placement of proper signs:

County Trunk Highway ES – along both sides of County Trunk Highway ES between its intersections with Bayview Road and Front Street in the Village of Mukwonago – SNOW ROUTE, NO PARKING, 2AM-6AM, NOV. 1- MAR 31.

BE IT FURTHER ORDAINED that this ordinance rescinds all other previous parking regulations for the above-described portion of the County Trunk Highway System.

APPROVE NEW PARKING REGULATION FOR COUNTY TRUNK HIGHWAY ES  
(MAIN STREET) IN THE VILLAGE OF MUKWONAGO

Presented by:  
Public Works Committee

  
\_\_\_\_\_  
David W. Swan, Chair

  
\_\_\_\_\_  
James Batzko

  
\_\_\_\_\_  
Keith Hammitt

  
\_\_\_\_\_  
Christine M. Howard

  
\_\_\_\_\_  
Darlene M. Johnson

  
\_\_\_\_\_  
Chris Mommaerts

  
\_\_\_\_\_  
Thomas J. Schellinger

The foregoing legislation adopted by the County Board of Supervisors of Waukesha County, Wisconsin, was presented to the County Executive on:

Date: 3/26/2021,   
\_\_\_\_\_  
Margaret Wartman, County Clerk

The foregoing legislation adopted by the County Board of Supervisors of Waukesha County, Wisconsin, is hereby:

Approved: X  
Vetoed: \_\_\_\_\_

Date: 4/1/2021,   
\_\_\_\_\_  
Paul Farrow, County Executive

# Ordinance 175-O-088

Ordinance 175-O-088: Approve New Parking Regulati...

 **Passed By Majority Vote**

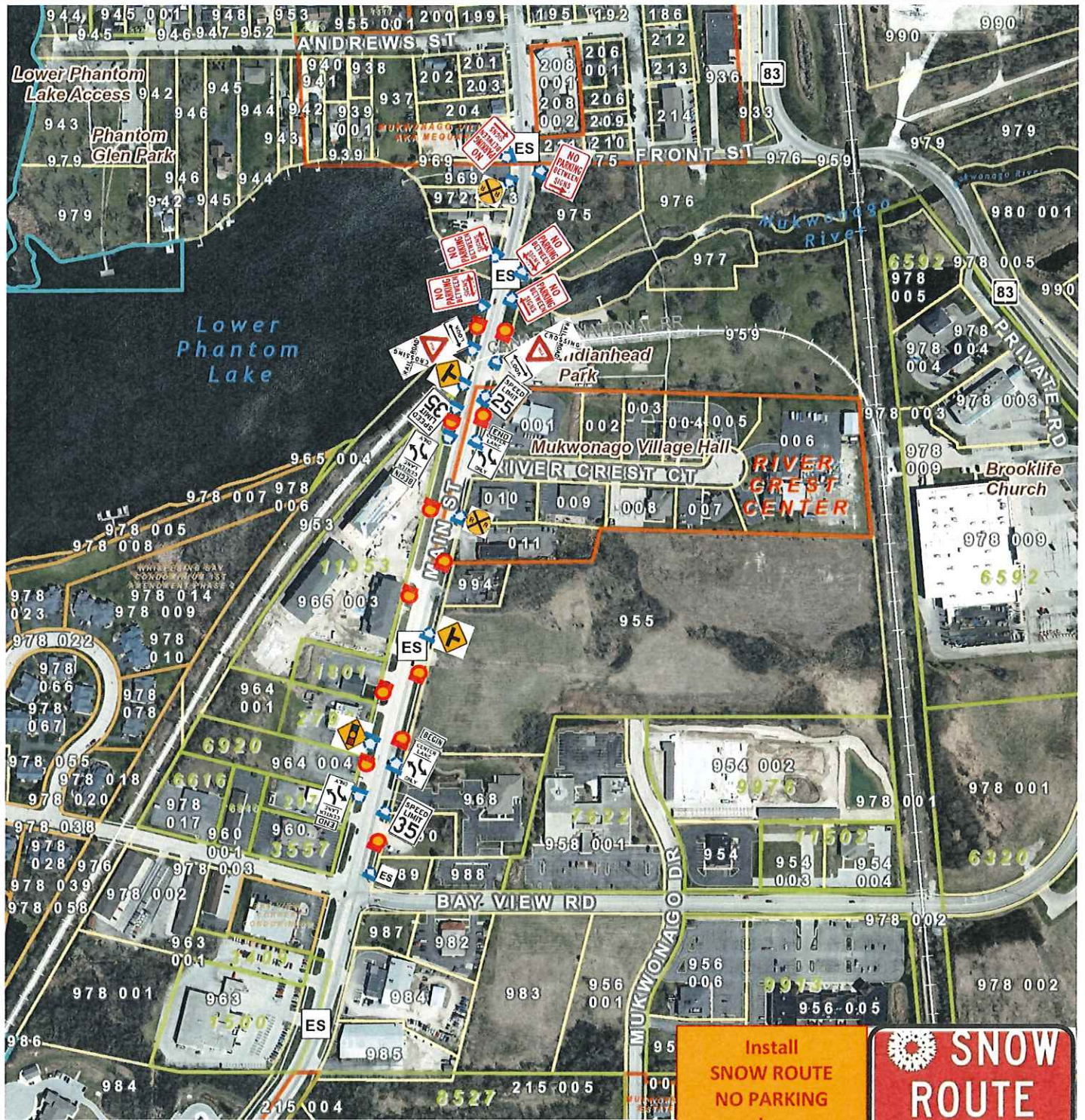
D1 - Foti	AVE	D14 - Mommaerts	AVE
D2 - Zimmermann	AVE	D15 - Mitchell	AVE
D3 - Morris	AVE	D16 - Crowley	AVE
D4 - Batzko	AVE	D17 - Paulson	AVE
D5 - Dondlinger	AVE	D18 - Nelson	AVE
D6 - Walz	AVE	D19 - Cummings	AVE
D7 - LaFontain	AVE	D20 - Schellinger	AVE
D8 - Michalski	AVE	D21 - Gaughan	AVE
D9 - Heinrich	AVE	D22 - Wysocki	AVE
D10 - Swan	AVE	D23 - Hammitt	AVE
D11 - Howard	AVE	D24 - Wherrow	ABSENT
D12 - Wolff	AVE	D25 - Johnson	AVE
D13 - Decker	AVE		

March 23 2021 - March 23 2021 07:55:56 PM



LAND INFORMATION SYSTEMS DIVISION

# CTH ES (Main St), both sides Bayview Rd - Front St: NO SNOW NIGHT PARKING



Install  
SNOW ROUTE  
NO PARKING  
signs  
(R7-2xx, 18"x24")

**SNOW ROUTE**

**NO PARKING**

2 AM - 6 AM

NOV 1- MAR 31

0 400.00 Feet



## Legend & Notes

Printed: 2/1/2022

Sign mounted on steel post:

Existing

Proposed



1 APPROVE NEW PARKING REGULATION FOR COUNTY TRUNK HIGHWAY ES  
2 (MAIN STREET) IN THE VILLAGE OF MUKWONAGO  
3  
4

5 WHEREAS, the parking, standing and stopping of vehicles along county trunk highways can have  
6 a detrimental effect upon highway capacity and safety; and  
7

8 WHEREAS, a prohibited parking area provides safe visibility of traffic conditions for motorists;  
9 and  
10

11 WHEREAS, Section 349.13 of the Wisconsin Statutes provides that local authorities may  
12 regulate the parking, standing and stopping of vehicles along such highways.  
13

14 THE COUNTY BOARD OF SUPERVISORS OF THE COUNTY OF WAUKESHA ORDAINS the following  
15 parking regulation shall be in effect upon placement of proper signs:  
16

17 County Trunk Highway ES – along both sides of County Trunk Highway ES  
18 between its intersections with Bayview Road and Front Street in the  
19 Village of Mukwonago – SNOW ROUTE, NO PARKING, 2AM-6AM, NOV. 1-  
20 MAR 31.  
21

22 BE IT FURTHER ORDAINED that this ordinance rescinds all other previous parking regulations for  
23 the above-described portion of the County Trunk Highway System.