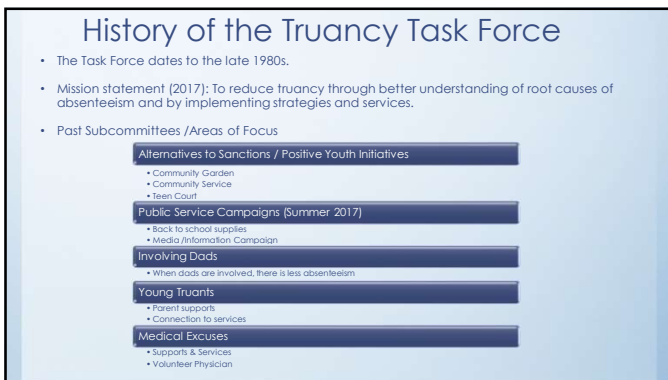
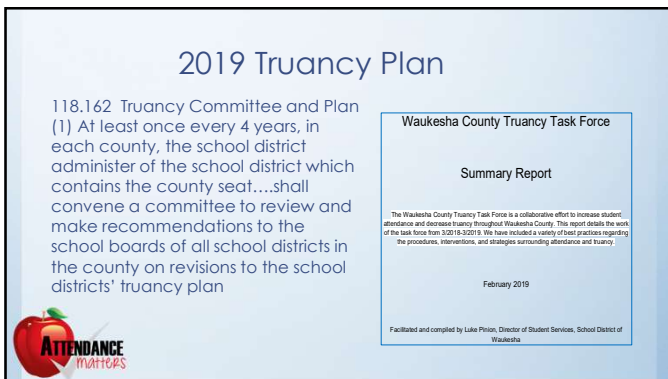




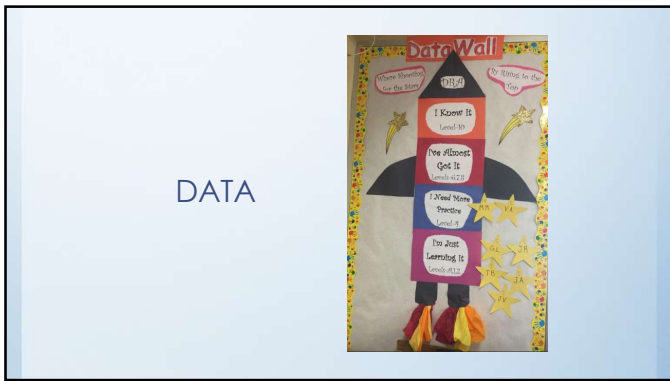
1



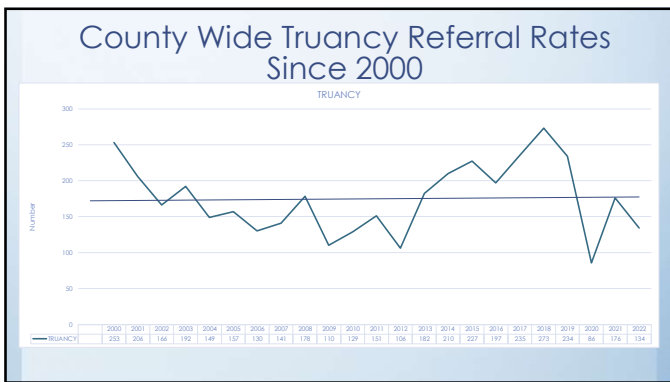
2



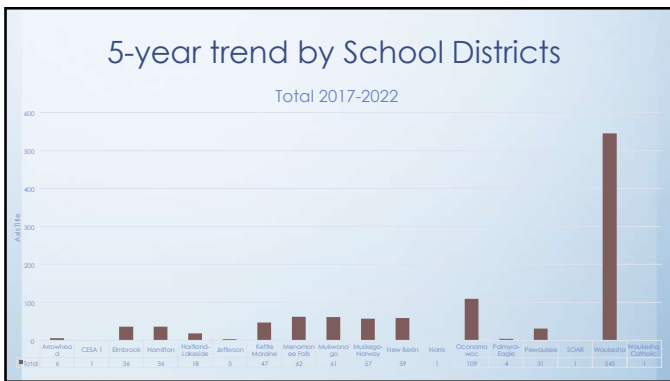
3



4



5



6

2017-22 Controlling for Enrollment

School District	Sum of Count	DPI Enrollment	Truancy referral rate per year
Arrowhead	6		
CESA 1	1		
Embree	36	7727	0.08%
Hamilton	36	5007	0.12%
Hartland-Lakeside	18		
Jefferson	3		
Kettle Moraine	47	3575	0.22%
Manomonee Falls	62	3937	0.26%
Mukwonago	61	5069	0.20%
Muskego-Norway	57	4801	0.20%
New Berlin	59	4241	0.23%
Norris	1		
Oconomowoc	109	5031	0.36%
Palmira-Eagle	4		
Pewaukee	31	2903	0.18%
SCAR	1		
Waukesha	545	12080	0.75%
Waukesha Catholic	1		
Grand Total	1078		

7

Truancy Task Force What the Research Tells us



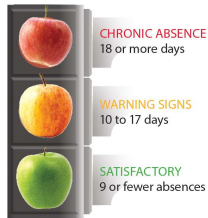
8

Student's attendance impacts their educational success

Did you know?

- By 6th grade, absenteeism is one of three signs that a student will drop out of school
- By 9th grade, attendance is a better predictor of graduation than 8th grade test scores
- Missing 18 days of school (within one school year) can make it harder to learn to read
- Absences can affect the whole classroom if the teacher has to repeat information to help kids catch up

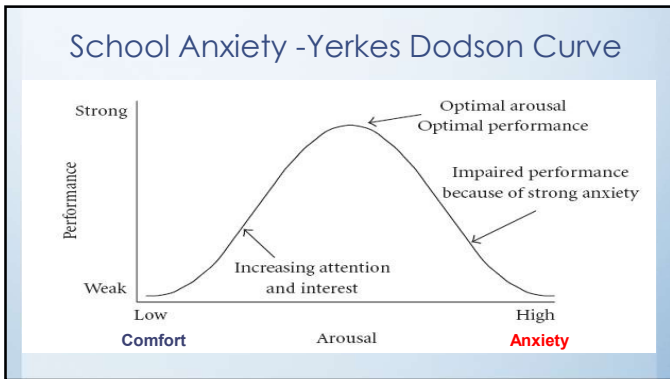
When Do Absences Become a Problem?



Note: These numbers assume a 180-day school year.

* reachoutandread.org

9



10

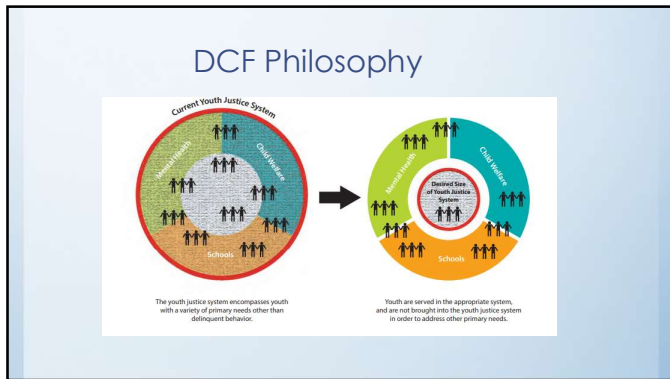
Outcomes for Truants served in the Youth Justice System

- On average, the school attendance of youth in the YJ system DECLINED (average of 5 additional truant days compared to control group)
- Older youth experienced significantly greater attendance declines in their first year involved in the YJ system
- Youth who are in YJ feel stigmatized
- Court hearings may interfere with school day
- Schools may receive sensitive court or YJ material that is unrelated to truancy
- Involvement in YJ may alter youth's self-perception and they may adopt negative behaviors

11

External Pressures on the Educational System

12



13

Impact of COVID

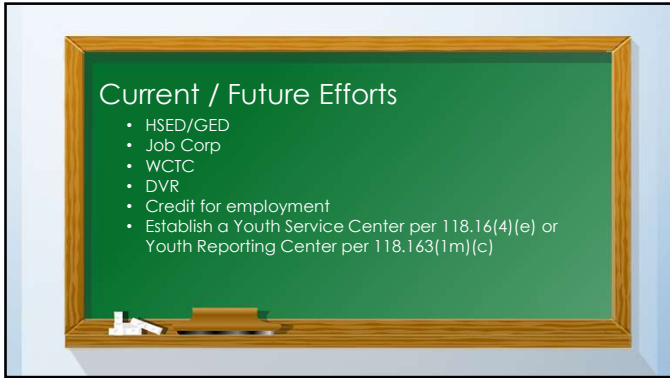
- Before the pandemic, about 8 million U.S. students were considered chronically absent, according to the research group Attendance Works. That's when a student misses 10% or more of the school year. By spring 2022, that number had doubled to around 16 million.
- Students who are chronically absent are at higher risk of [falling behind](#), [scoring lower on standardized tests](#) and even [dropping out](#).
- Prevalent Themes
 - Transportation
 - Poverty
 - Mental Health

14

Current Efforts

- Mental Health Navigator
- Attendance Specialist
- Monthly Attendance Reports to Parents
- PATH Program
- WCS
- Credit Recovery Program
- Competency Diploma
- GED Option 2 Program

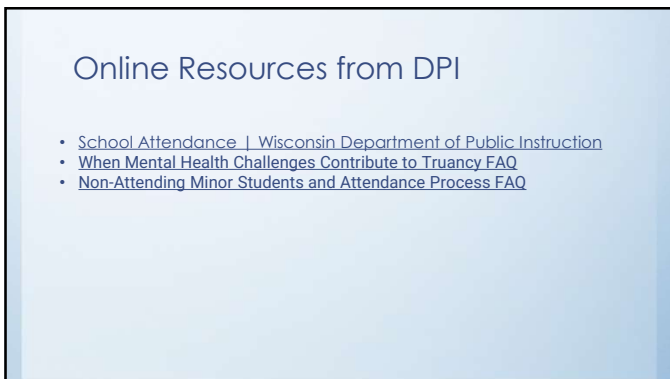
15



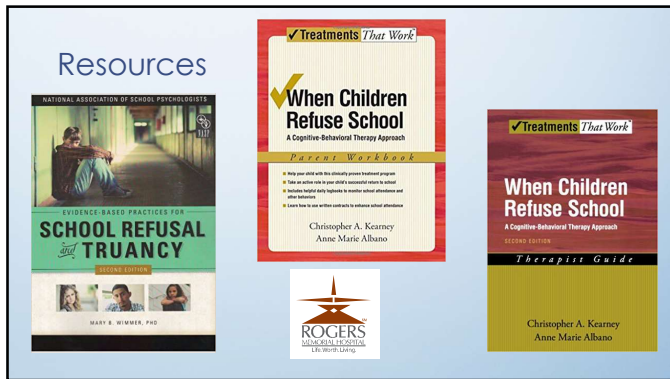
16



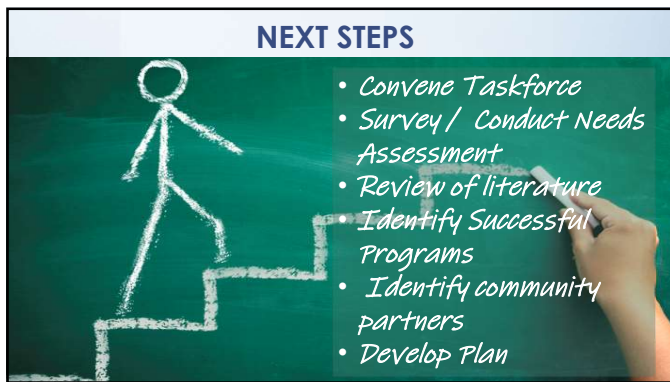
17



18



19



20
