

Evolution of Child Protective Services

January 2023

Eric Calvino
Child & Family Division
Coordinator

WAUKESHA COUNTY
CHILD & FAMILY DIVISION

1

OVERVIEW

- Initial Child Protective Services
- Ongoing Child Protective Services

WAUKESHA COUNTY
CHILD & FAMILY DIVISION

2

Initial Child Protective Services

Access

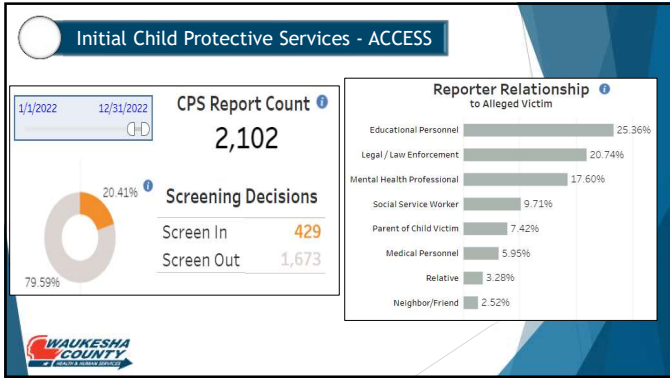
- Receive and document reports of alleged maltreatment from the community
- Identify families that the CPS system must respond to
- Determine the urgency of the response time

Initial Assessment

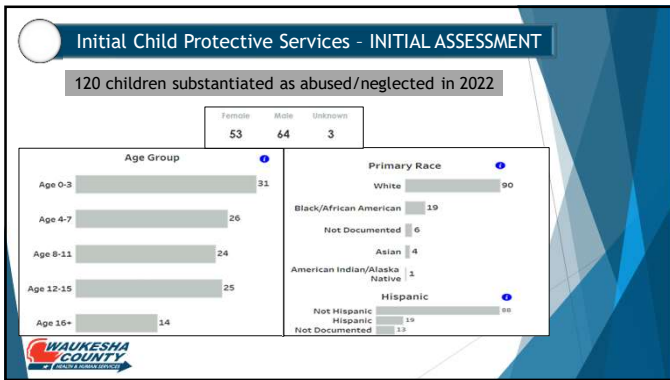
- Assess and analyze Present and Impending Danger Threats to child safety
- Take protective action, when necessary, to control threats to child safety
- Determine the need for CPS ongoing services (voluntary or court-ordered)
- Determine whether maltreatment occurred

WAUKESHA COUNTY
CHILD & FAMILY DIVISION

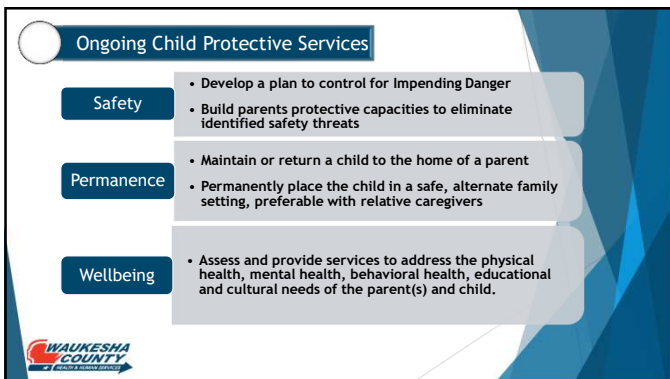
3



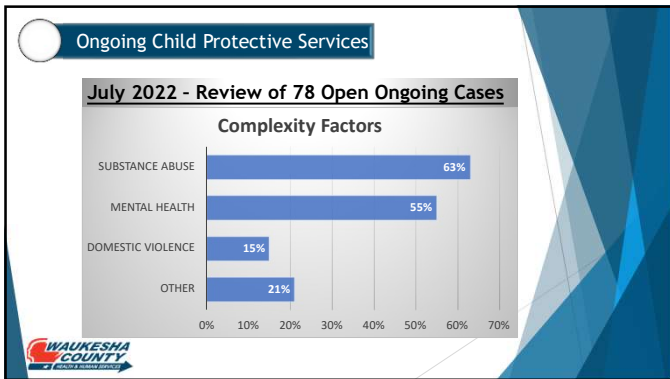
4



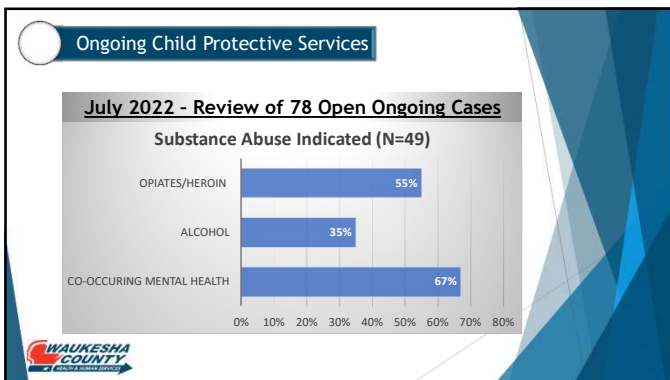
5



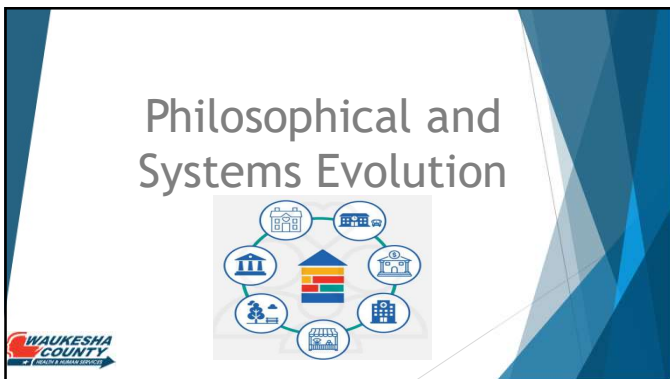
6



7



8




9

Family First Strategic Transformation

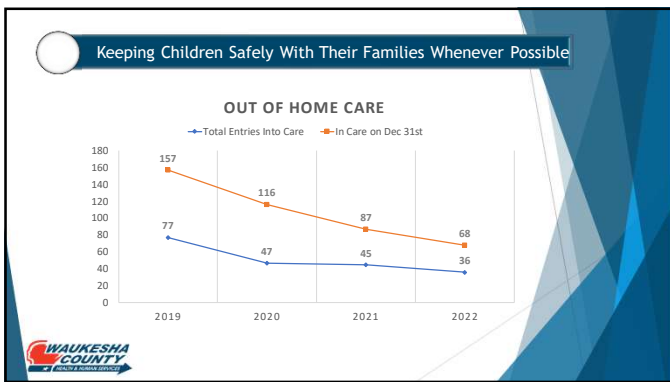
With the codification of the Family First Prevention Services Act in 2018, Wisconsin has been progressively working toward transitioning the child welfare system to become more in-home, family-focused, and collaborative.

Success is measured by:

- Keeping Children Safely With Their Families Whenever Possible
- Building Services to Support Families in Their Homes.
- When Placement is Needed, Keeping Children in Family Settings



10



11


Building Services to Support Families in Their Homes

Targeted Safety Support Funding (TSSF)

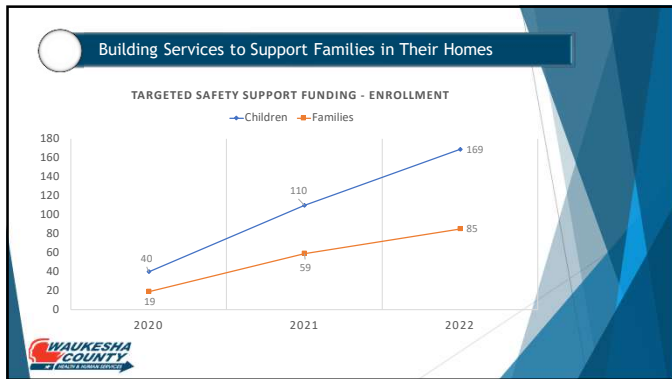
Flexible grant funding to serve families when children are unsafe and at risk of removal from their home or when additional supports are needed to return a child home.

The primary goal of the TSSF is to keep families together by:

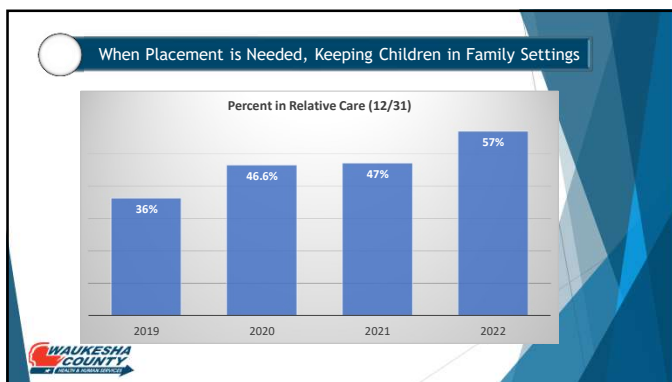
- Increasing parental protective capacities
- Decreasing out-of-home placements
- Helping families develop formal and informal supports
- Reducing maltreatment to children
- Supporting reunification planning to prevent re-entry



12



13




14



15

Build and Support Evidence Based Service

- PREVENTION SERVICES**
TripleP Parents as Teachers SafeCare
- FAMILY STABILIZATION PROGRAMS**
Homebuilders Family Centered Treatment (FCT)
- IN-HOME AODA SERVICES**
Creating Change Seeking Safety
- PEER MENTOR PROGRAMS**
Iowa Parent Partner Approach



16



17
