

# Waukesha County Drug Treatment Court

Presented by:

Hon. Maria Lazar, Circuit Court Judge

Rebecca Luczaj, CJCC Coordinator

January 17, 2019



# Overview of Drug Courts



## Adult Drug Court Definition

A court program managed by a multidisciplinary team that responds to the offenses and treatment needs of offenders who have a drug addiction through:

- ✓ Early, continuous, and intense treatment
- ✓ Close judicial supervision and involvement
- ✓ Mandatory and random drug testing
- ✓ Community supervision
- ✓ Use of appropriate incentives and sanctions
- ✓ Recovery support services/continuing care

*(Bureau of Justice Assistance, 2015)*

# Overview of Drug Courts



## NADCP Recommended Model

- Post plea, pre-adjudication
- Prosecutor as gatekeeper, but allow for collaborative team decision-making
- Target only serious, high-risk offenders

# Overview of Drug Courts



## TEN KEY COMPONENTS

- Developed in 1996
- Essential components of Drug Court model
- Core framework for all Problem-Solving Courts
- How well Drug Courts reduce crime & save money depends largely on their fidelity to the 10 Key Components

*Source: BJA/NDCI July 2011*

# Overview of Drug Courts



## Key Component #1

Drug courts integrate alcohol and other drug treatment services with justice system case processing.

# Overview of Drug Courts



## Key Component #2

Using a non-adversarial approach, prosecution and defense counsel promote public safety while protecting participants' due process rights.

# Overview of Drug Courts



## Key Component #3

Eligible participants are identified early and promptly placed in the drug court program.

# Overview of Drug Courts



## Key Component #4

Drug courts provide access to a continuum of alcohol, drug, and other related treatment and rehabilitation services.



# Overview of Drug Courts



## Key Component #5

Abstinence is monitored by frequent alcohol and other drug testing.

# Overview of Drug Courts



## Key Component #6

A coordinated strategy governs drug court responses to participants' compliance.

# Overview of Drug Courts



## Key Component #7

Ongoing judicial interaction with each drug court participant is essential.

# Overview of Drug Courts



## Key Component #8

Monitoring and evaluation measure the achievement of program goals and gauge effectiveness.

# Overview of Drug Courts



## Key Component #9

Continuing interdisciplinary education promotes effective drug court planning, implementation, and operations.

# Overview of Drug Courts



## Key Component #10

Forging partnerships among drug courts, public agencies, and community-based organizations generates local support and enhances drug court program effectiveness.

# Waukesha County Drug Treatment Court

## Mission Statement

*The mission of the Waukesha County Drug Treatment Court is to advance public safety, reduce crime, reduce costs to our community, and improve individual and community health by providing intensive, integrated, evidence-based court supervision and comprehensive treatment services for drug dependent offenders.*

# Waukesha County Drug Treatment Court

## Program Eligibility Criteria

- ✓ Waukesha County Resident
- ✓ 17 Years of Age or Older
- ✓ Non-Violent Offender
- ✓ High Risk (per risk assessment tool)
- ✓ Drug Dependent (per behavioral health screening tool)
- ✓ Screened and Approved by the DA's Office



# Waukesha County Drug Treatment Court

## Staffing Team Members

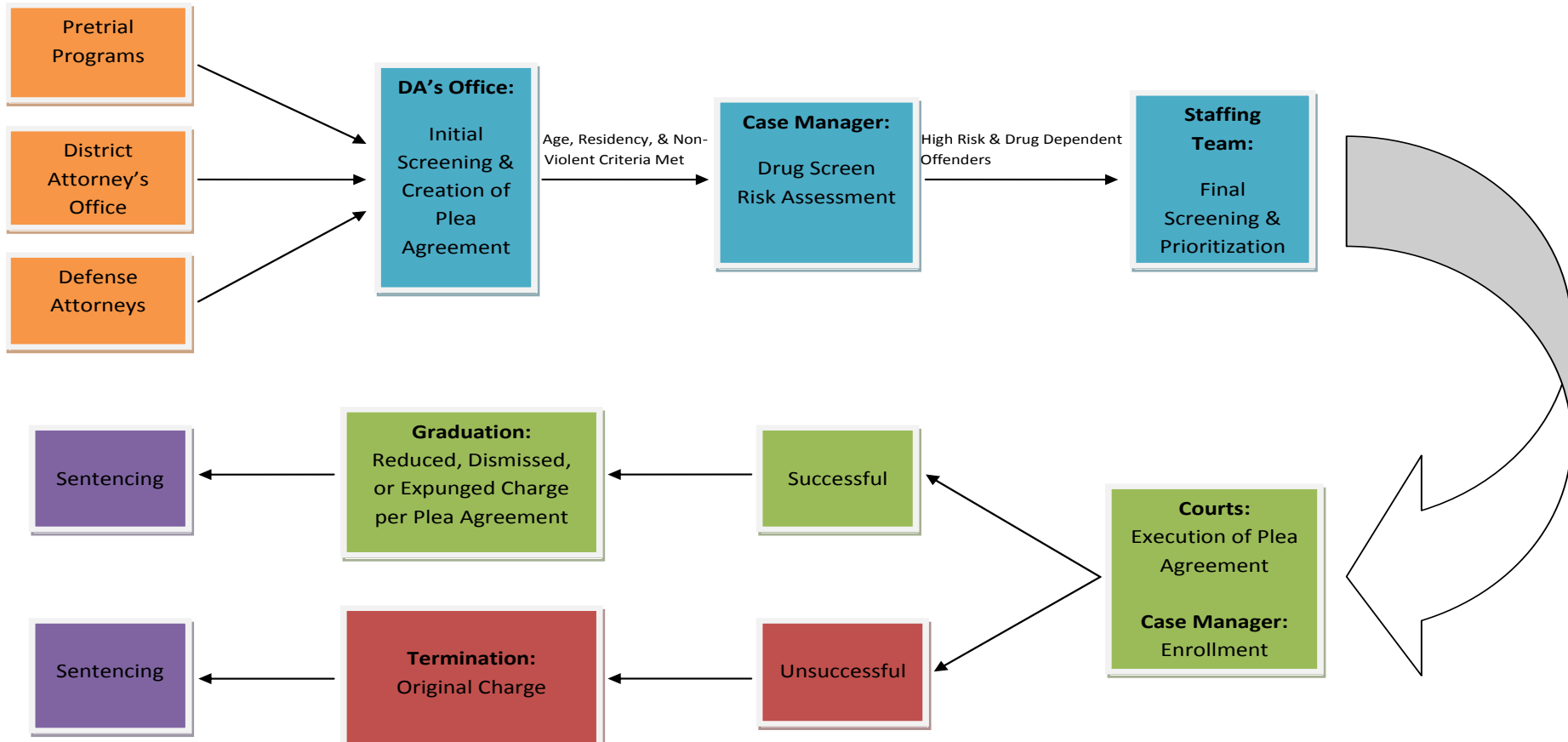
- Judge
- Assistant District Attorney
- Assistant Public Defender
- Case Manager
- DOC Probation Agent
- HHS Substance Abuse Counselor
- Sheriff's Department Captain



# Waukesha County Drug Treatment Court

## WAUKESHA COUNTY DRUG TREATMENT COURT PROGRAM FLOW CHART: REFERRAL TO DISCHARGE

### Referral Sources



# Waukesha County Drug Treatment Court

## Eligibility Screening Tools

**Behavioral Health Screening Tool:** GAIN-SS (Global Appraisal of Individual Needs- Short Screener)

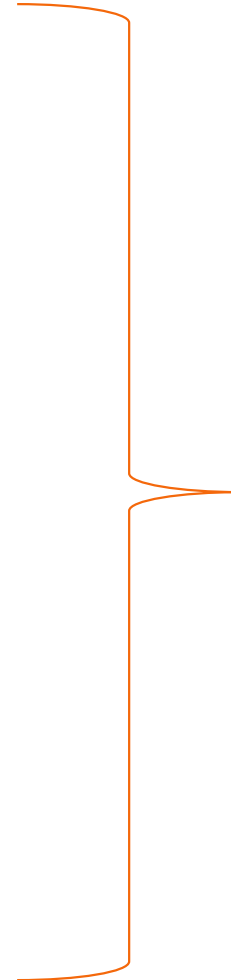
**Risk & Needs Screening Tool:** RANT (Risk and Needs Triage)

### Risk and Needs Quadrants™

		Criminogenic Risks	
		High	Low
Clinical Needs	High	<ul style="list-style-type: none"><li>• Court supervision</li><li>• Status calendar</li><li>• Intensive drug treatment</li><li>• Rewards &amp; sanctions</li><li>• UA monitoring</li></ul>	<ul style="list-style-type: none"><li>• Probation supervision</li><li>• Non-compliance calendar</li><li>• Intensive drug treatment</li><li>• Rewards &amp; sanctions</li><li>• UA monitoring</li></ul>
	Low	<ul style="list-style-type: none"><li>• Probation supervision</li><li>• Status calendar</li><li>• Pro-social rehabilitation</li><li>• Rewards &amp; sanctions</li><li>• Intermediate punishment for non-compliance</li></ul>	<ul style="list-style-type: none"><li>• Pretrial services supervision</li><li>• Non-compliance calendar</li><li>• Prevention / education</li></ul>

# Waukesha County Drug Treatment Court

	Phase I	Phase II	Phase III	Phase IV
	120 Days	90 Days	90 Days	60 Days
Court Obligations	<ul style="list-style-type: none"> <li>▶ Judicial status hearing every two weeks</li> </ul>	<ul style="list-style-type: none"> <li>▶ Judicial status hearing every two weeks</li> </ul>	<ul style="list-style-type: none"> <li>▶ Judicial status hearing once a month</li> </ul>	<ul style="list-style-type: none"> <li>▶ Judicial status hearing once a month</li> </ul>
Supervision & Monitoring Requirements	<ul style="list-style-type: none"> <li>▶ Random drug testing three times per week</li> <li>▶ PBT's three times per week</li> <li>▶ Meet with case manager at least once a week</li> </ul>	<ul style="list-style-type: none"> <li>▶ Random drug testing at least twice per week</li> <li>▶ PBT's at least twice per week</li> <li>▶ Meet with case manager at least once every two weeks</li> </ul>	<ul style="list-style-type: none"> <li>▶ Random drug testing at least twice per week</li> <li>▶ PBT's at least twice per Week</li> <li>▶ Meet with case manager at least once every two weeks</li> </ul>	<ul style="list-style-type: none"> <li>▶ Random drug testing at least twice per week</li> <li>▶ PBT's at least twice per week</li> <li>▶ Meet with case manager at least once a month</li> </ul>
Treatment Requirements	<ul style="list-style-type: none"> <li>▶ Complete assessment and individualized treatment plan</li> <li>▶ Attend treatment as identified in assessment</li> <li>▶ Attend at least three self-help meetings per week</li> <li>▶ Obtain a sponsor within 30 days</li> </ul>	<ul style="list-style-type: none"> <li>▶ Attend treatment as identified in assessment</li> <li>▶ Attend at least three self-help meetings per week</li> </ul>	<ul style="list-style-type: none"> <li>▶ Attend treatment as identified in assessment</li> <li>▶ Attend at least two self-help meetings per week</li> </ul>	<ul style="list-style-type: none"> <li>▶ Develop aftercare treatment plan</li> <li>▶ Attend AODA recovery group 1 time/month</li> <li>▶ Attend two self-help meetings per week</li> </ul>
Other Requirements	<ul style="list-style-type: none"> <li>▶ Determined on an individual, as-needed, basis</li> <li>▶ Alumni program participation</li> </ul>	<ul style="list-style-type: none"> <li>▶ Determined on an individual, as-needed, basis</li> <li>▶ Alumni program participation</li> </ul>	<ul style="list-style-type: none"> <li>▶ Determined on an individual, as-needed, basis</li> <li>▶ Alumni program participation</li> </ul>	<ul style="list-style-type: none"> <li>▶ Pre-graduation conference and exit interview</li> <li>▶ Alumni program participation</li> </ul>



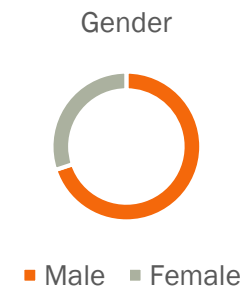
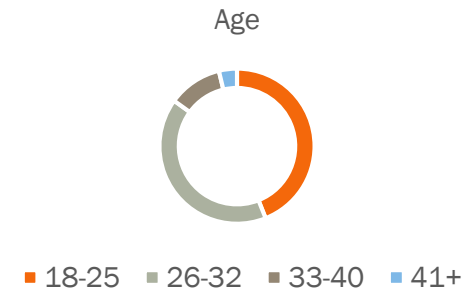
Phase Chart

# Waukesha County Drug Treatment Court

## Program Statistics

(March 2012 – December 2018)

- Total Clients Served: 266
- Current Caseload: 53
  - Phase I = 15
  - Phase II = 11
  - Phase III = 16
  - Phase IV = 11
- Average Age: 18-25 yrs. (44%); 26-32 yrs. (41%)
- Male: 70%      Female: 30%
- Primary Substance of Abuse: Heroin
- Secondary Substance of Abuse: Prescription Opiates
- Average Program Length: 18 months
- Successful Graduations: 127 (60%)\*
- Unsuccessful Discharges: 88 (40%)



\*In-line with national averages for adult drug courts serving high-risk clients

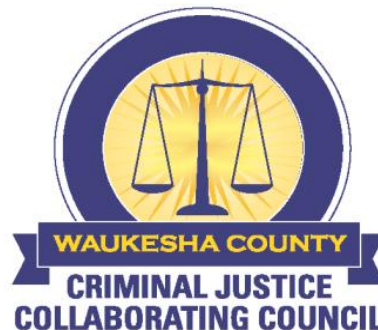
# Waukesha County Drug Treatment Court

For More Information:

[www.waukeshacounty.gov/cjcc](http://www.waukeshacounty.gov/cjcc)

Rebecca Luczaj, CJCC Coordinator

[rluczaj@waukeshacounty.gov](mailto:rluczaj@waukeshacounty.gov)



# Waukesha County Drug Treatment Court

Questions?

