

**Waukesha County Land & Water
Resource Management Plan
2022 Update**

**Public Information Meeting &
Public Hearing
11/10/2021**

Alan Barrows, Land Resources Manager
*Waukesha County Department of Parks and Land Use
Land Resources Division*

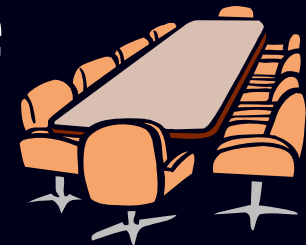
2022 LWRM Planning Process

- Advisory committee meetings
 - Chapters 1 & 2 (June 16)
 - Chapters 3 & 4 (August 5)
- August – Send draft to DATCP & DNR
- November – Public hearing
- November – Final plan to DATCP
- December – WI Land & Water Board
- January – County Board Approval



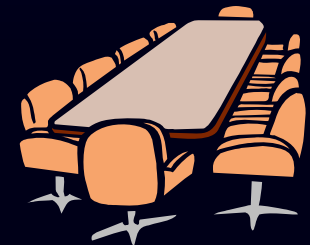
Plan Contents – from ATCP 50

- Water quality and soil erosion conditions, including identification of the causes of water quality impairment and pollutant sources.
- State and local regulations that the county will use to implement the plan.
- Water quality objectives for each watershed, including any available pollutant load reduction targets.



Plan Contents - continued

- Key water quality and soil erosion problem areas.
- Conservation practices needed to address key water quality and soil erosion problems.
- A plan to identify priority farms in the county.



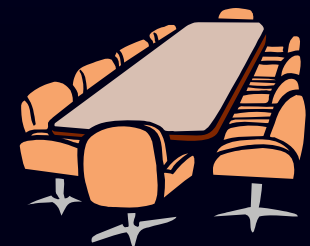
Plan Contents - continued

- Strategies to encourage voluntary implementation of conservation practices.
- Compliance procedures.
- Multi-year workplan to implement the farm conservation practices
- Benchmarks to monitor and measure progress in meeting performance targets and achieving plan goals/objectives.

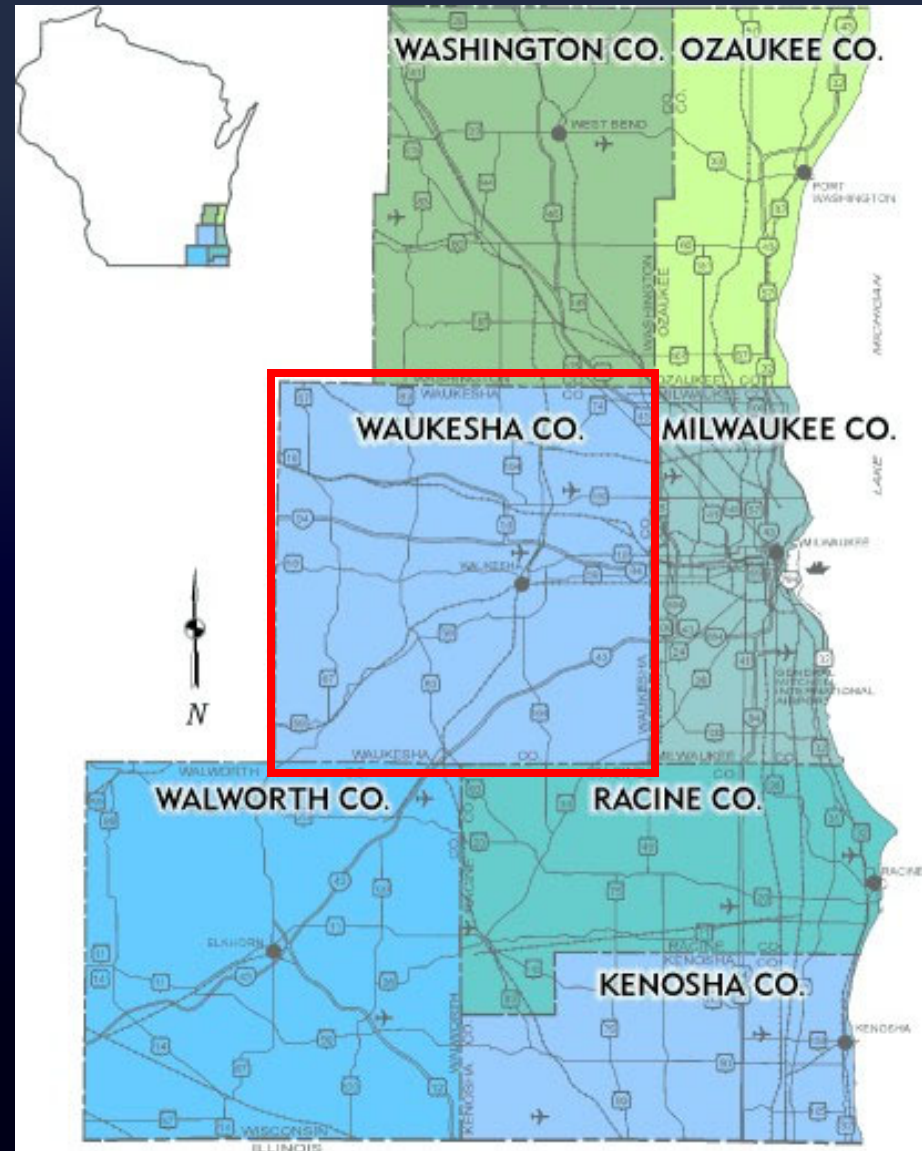


Plan Contents - continued

- Information and education plan.
- How the county will coordinate with federal, state, and local agencies.



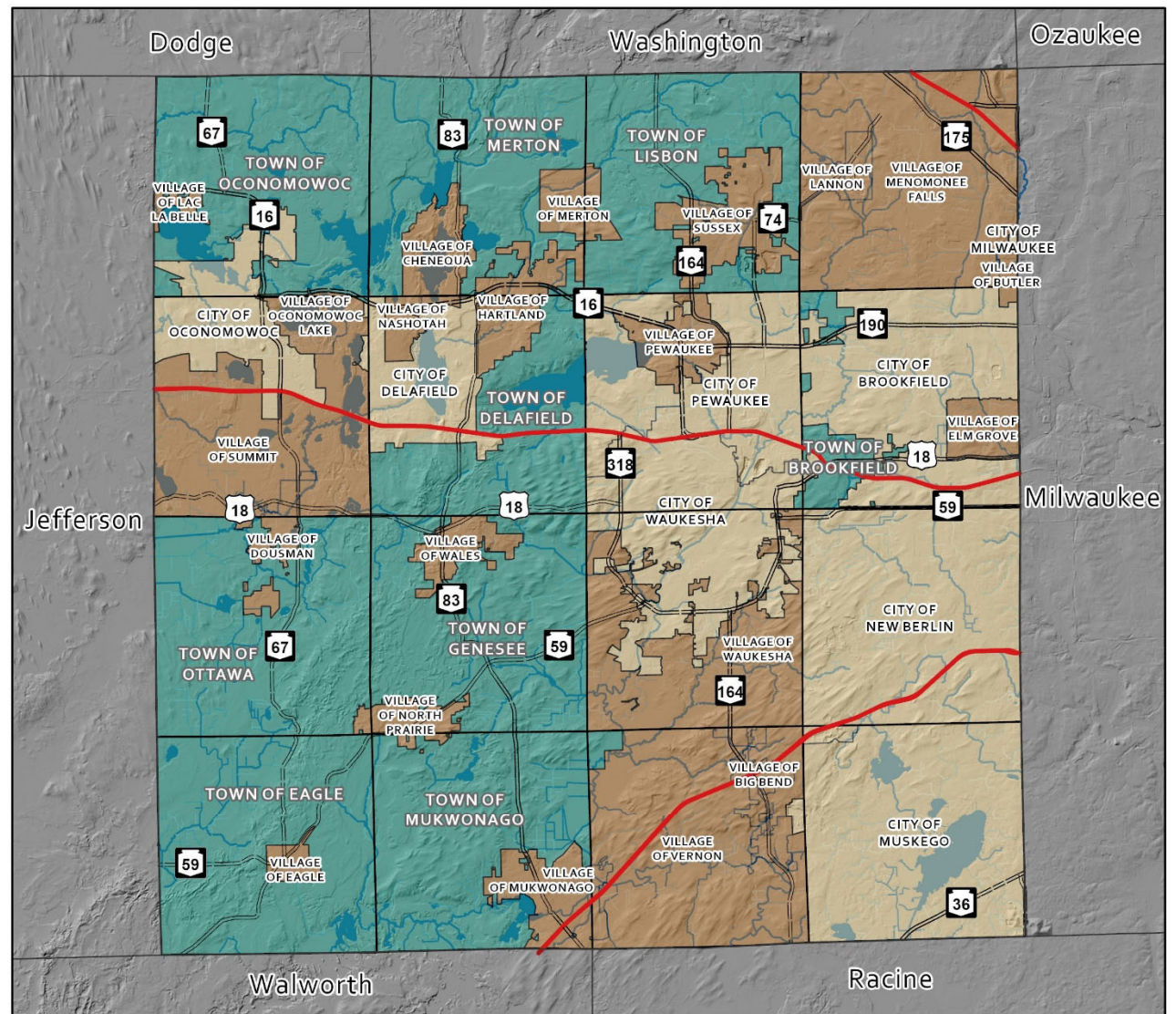
Location of Waukesha County



Waukesha County Municipalities

Towns (9)
Villages (21)
Cities (7)

37 Total



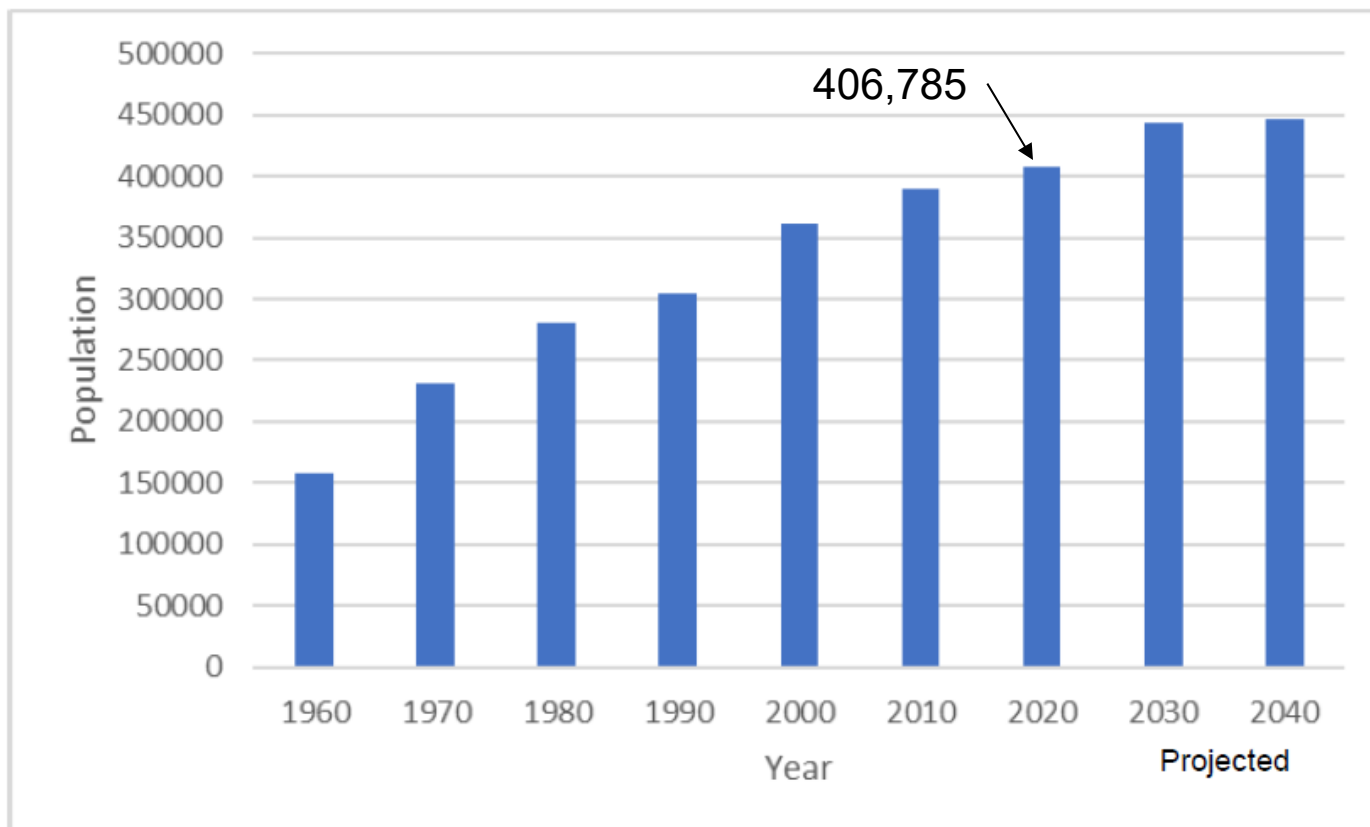
Legend

- Towns
- Cities
- Villages

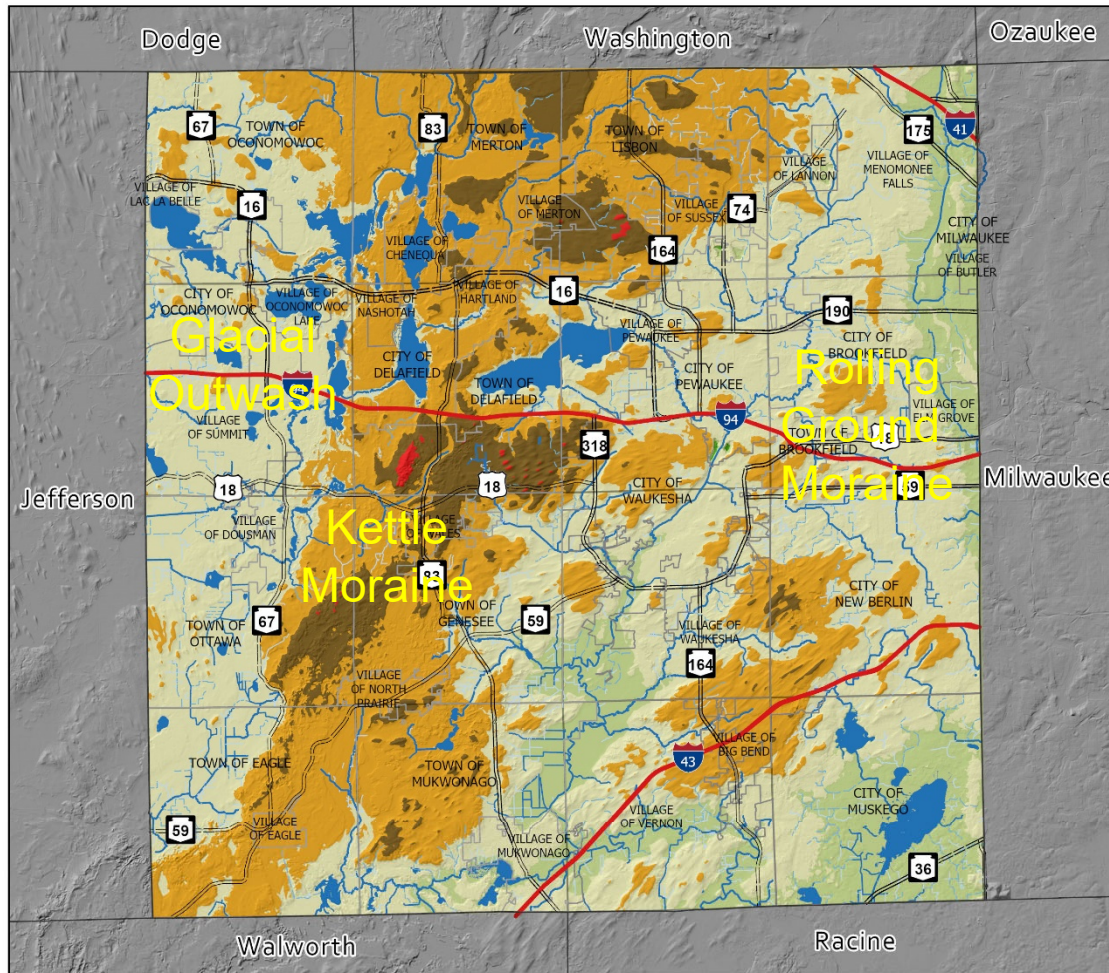


County Population (1960-2040)

Figure II-2
Historical and Projected Population for Waukesha County: 1960-2040



TOPOGRAPHY WAUKESHA COUNTY



Elevation

- 1200'-1235'
- 1100'-1200'
- 1000'-1100'
- 900'-1000'
- 800'-900'
- 699' - 800'
- <700'

Source: Waukesha County, WI DNR, SEWRPC

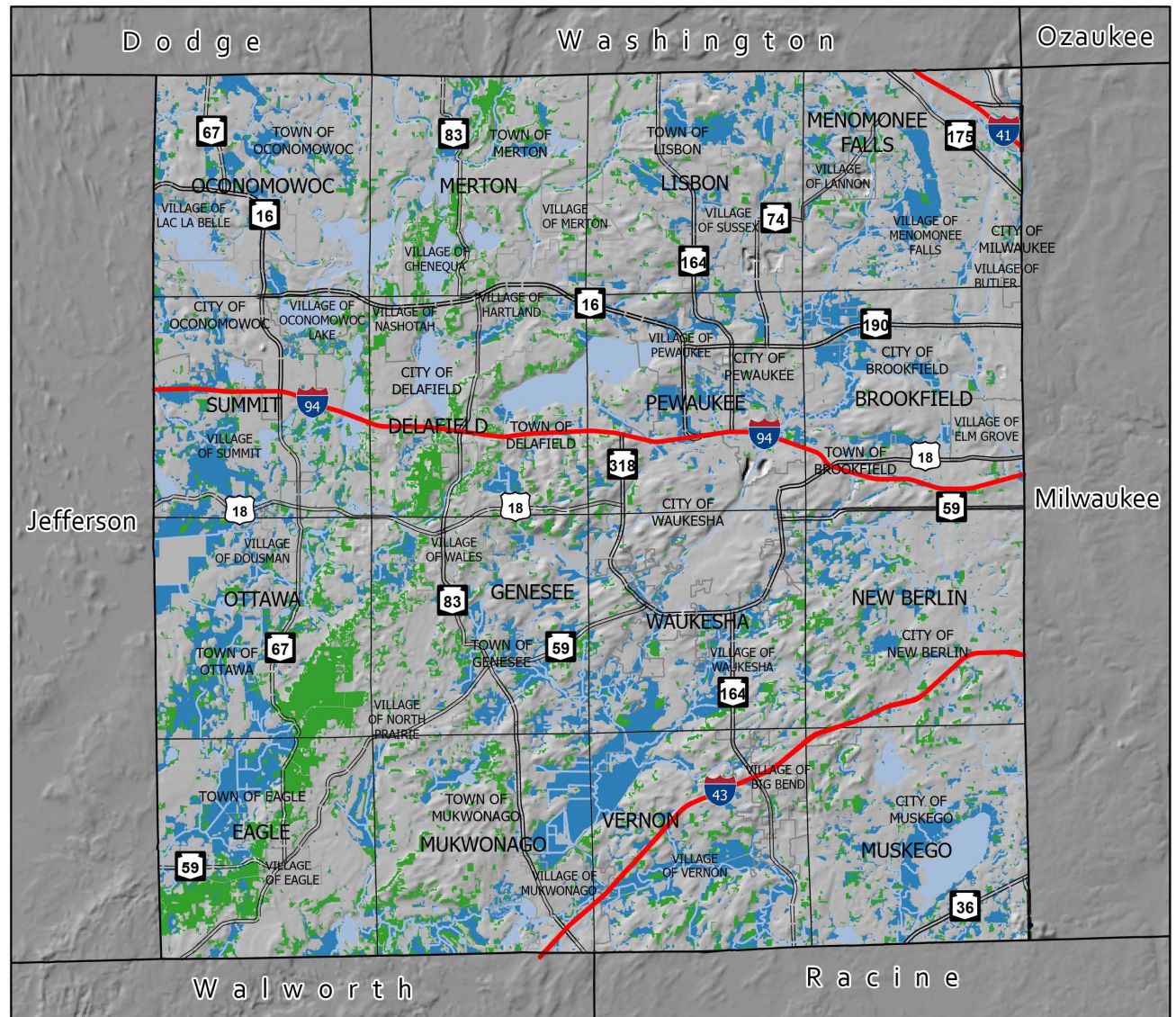


Woodlands & Wetlands

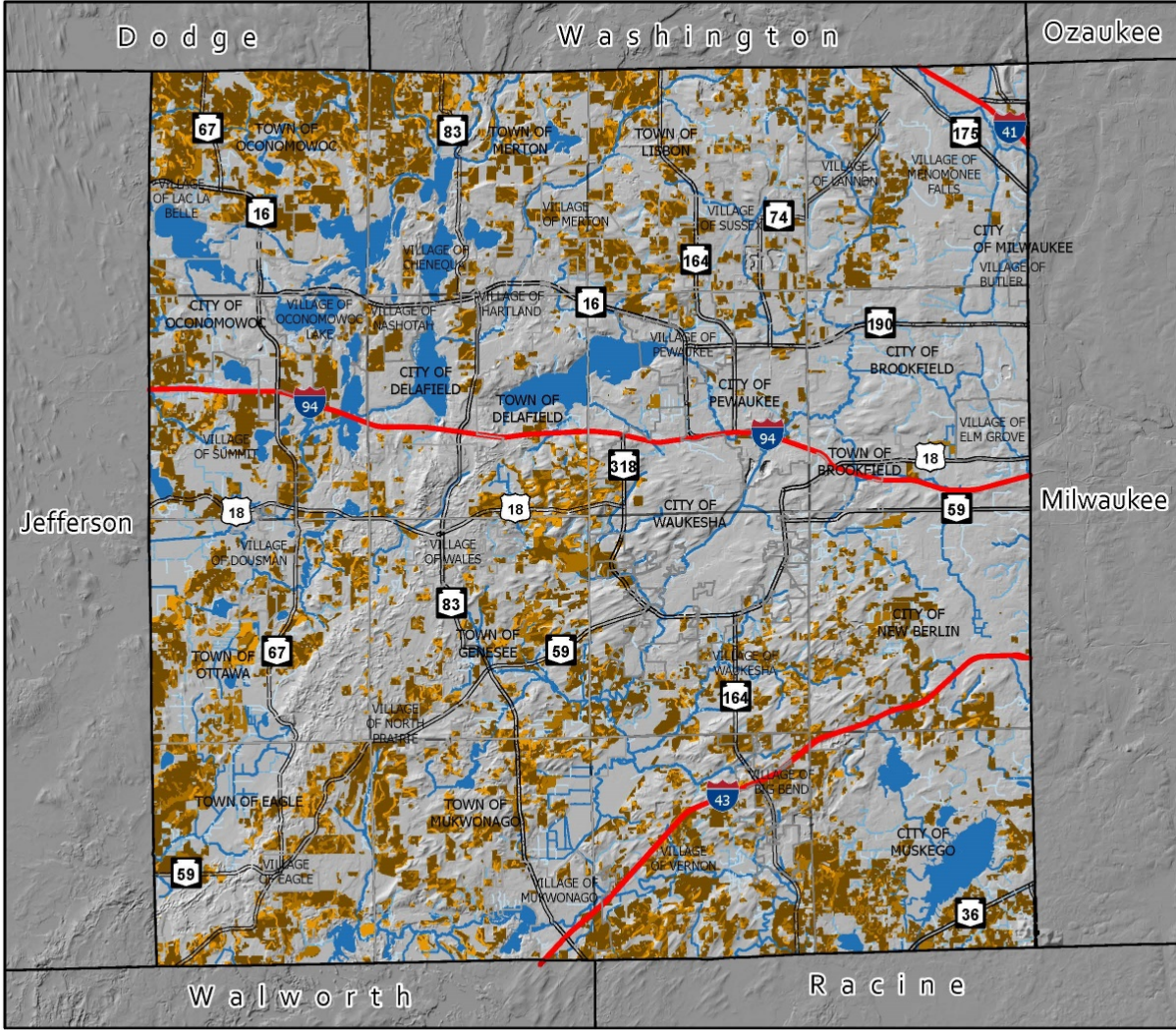
Waukesha County

Legend

-  Woodlands
-  Wetlands



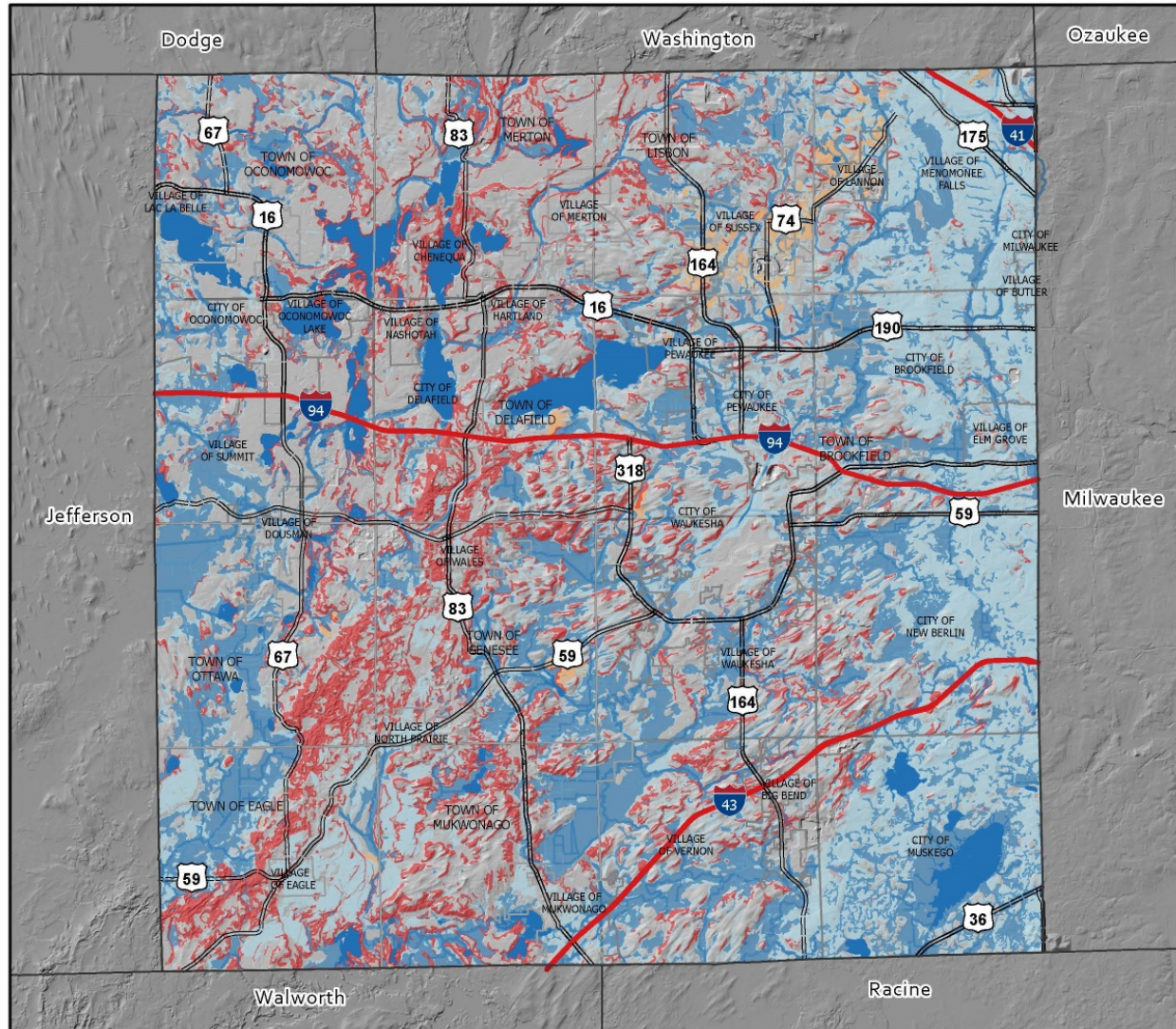
AGRICULTURAL LAND USE & CLASSIFICATION WAUKESHA COUNTY



- Legend
- NRCS Prime Agricultural Soils Group
 - Soils of Statewide Importance
 - Other Soils



SOIL LIMITATIONS FOR DEVELOPMENT WAUKESHA COUNTY



Legend




- Hydric Soils
- Hydric Inclusions
- Steep Slopes
- Shallow Bedrock

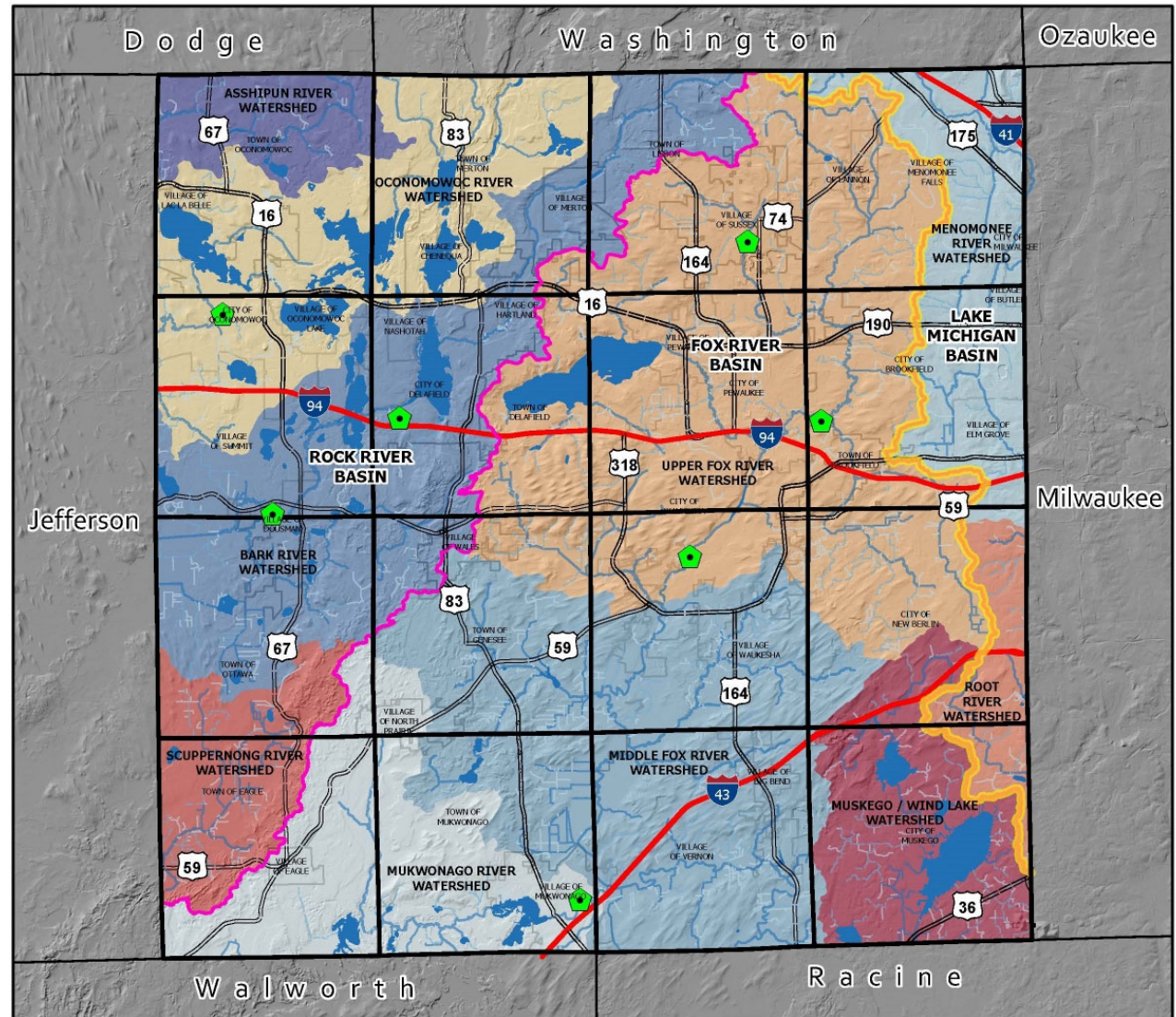


Watersheds

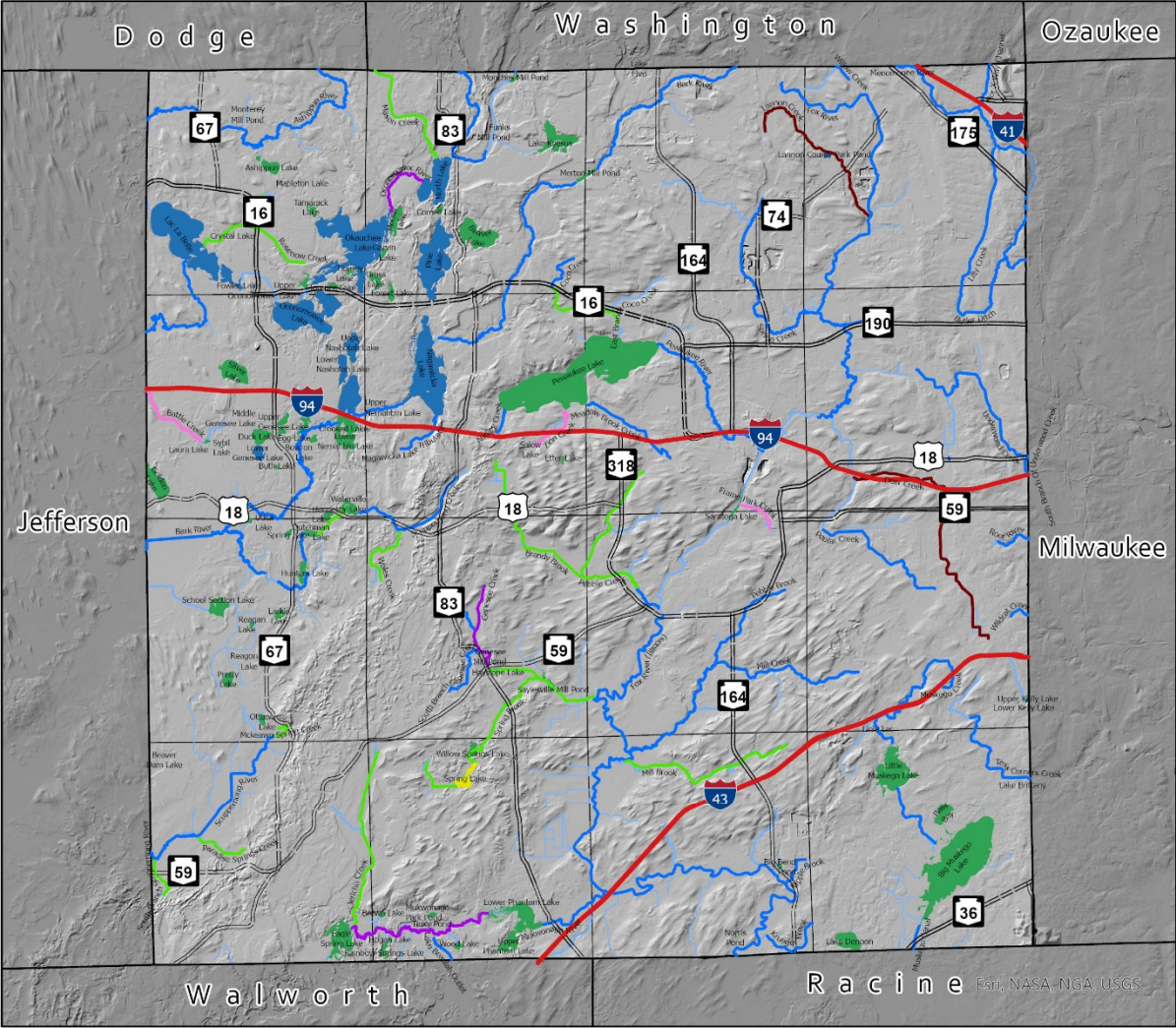
Waukesha County

Legend

-  Subcontinental Divide
-  River Basin Boundaries
-  Sewage Treatment Plants (7)



SURFACE WATER RESOURCES WAUKESHA COUNTY



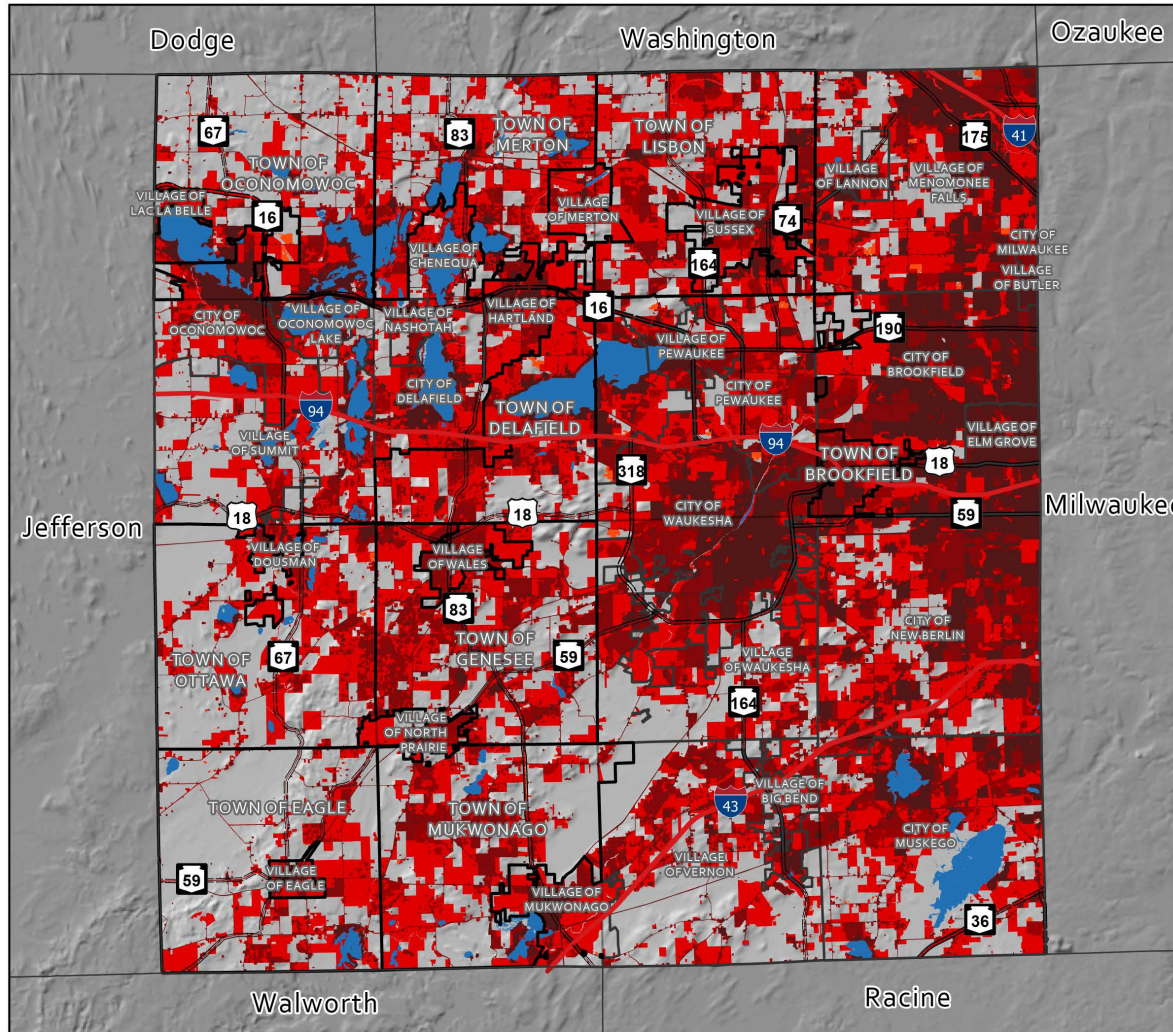
Legend

- | | |
|---|--|
| Outstanding Resource Water (ORW) | Limited Forage Fish (LFF) |
| Exceptional Resource Water (ERW) | Limited Aquatic Life (LAL) |
| Cold Water Streams (Cold) | Lake Supports Cold Water Species (Cold) |
| Warm Water Sport Fishing (WWSF) / Fish & Aquatic Life (FAL) | Lake Supports Fish and Aquatic Life (FAL/Warm) |



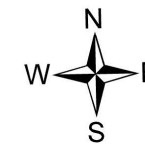
Est. NASA-NGA-USGS

RURAL to URBAN LAND USE CONVERSION: 1963-2015 WAUKESHA COUNTY

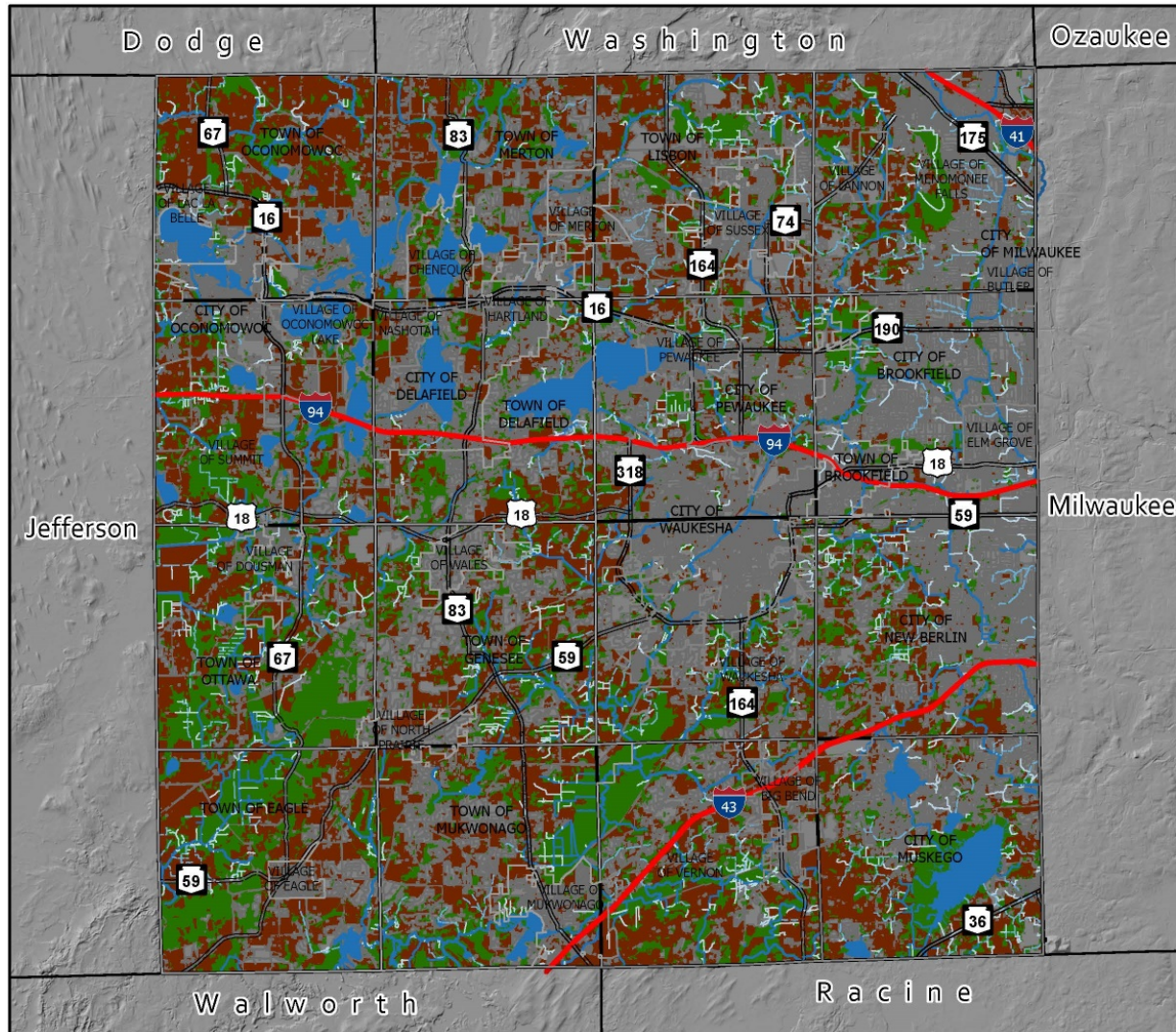


Legend

- 1963 Land Use
- 1985 Land Use
- 1995 Land Use
- 2010 Land Use
- 2015 Land Use



AGRICULTURAL LANDS, DEVELOPED LANDS & NATURAL AREAS WAUKESHA COUNTY: 2015



Legend

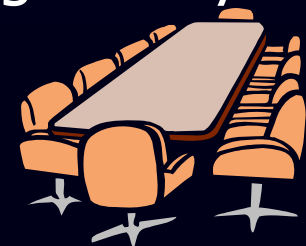
- Natural Areas (29% of County)
- Agricultural Lands (30% of County)
- Developed Lands (41% of County)



Chapter 3 – Goals, Objectives and Planned Activities

Goal 1: Control Urban Runoff Pollution and Flooding

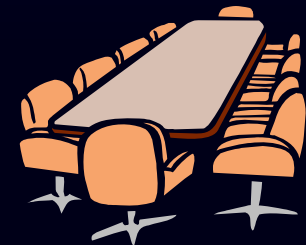
- Enforce State Non-Agricultural Nonpoint Pollution Performance Standards through the County Storm Water Management & Erosion Control Ordinance
- Update County Storm Water & Erosion Control Ordinance as needed
- Maintain compliance with County MS4 Storm Water Discharge Permit issued by DNR for all existing county-owned land and infrastructure



Chapter 3 – Goals, Objectives and Planned Activities

Goal 1: Control Urban Runoff Pollution and Flooding – cont'd

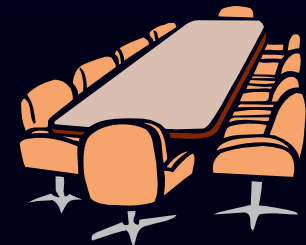
- Facilitate storm water best management practice (BMP) maintenance
- Provide storm water-related technical and cost-sharing services to other county departments and local organizations
- Prevent flooding of homes and businesses from surface and groundwater



Chapter 3 – Goals, Objectives and Planned Activities

Goal 1: Control Urban Runoff Pollution and Flooding – cont'd

- Promote and demonstrate watershed protection planning to guide and coordinate land use and storm water program efforts among communities in a watershed
- Promote and demonstrate low impact development techniques and innovative storm water BMPs
- Ensure water protection efforts are based on the sensitivity of the resource



Chapter 3 – Goals, Objectives and Planned Activities

Goal 2: Protect the Quality and Quantity of Groundwater

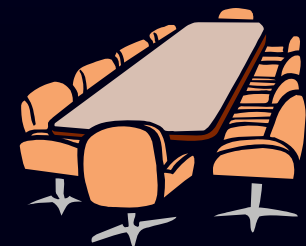
- Promote water conservation
- Protect groundwater recharge areas and encourage storm water infiltration
- Minimize the impacts on groundwater from nutrients, pesticides, road salt and other contaminants contained in urban and agricultural storm water runoff
- Promote the implementation of the SE Wisconsin Regional Water Supply Plan to protect surface and groundwater resources



Chapter 3 – Goals, Objectives and Planned Activities

Goal 3: Control Agricultural Runoff Pollution

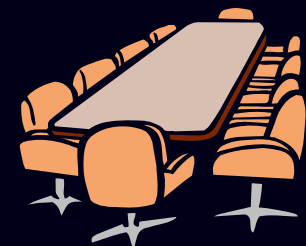
- Implement state agricultural performance standards and prohibitions
- Promote natural buffers between agricultural lands and water resources to protect water quality, wildlife habitat, and groundwater recharge



Chapter 3 – Goals, Objectives and Planned Activities

Goal 4: Educate the Public on Conservation Issues

- Target Audience: Developers, engineers, and local government officials
- Target Audience: General public
- Target Audience: Rural land owners and farm operators
- Target Audience: Teachers, students, school administrators and youth groups



Chapter 3 – Goals, Objectives and Planned Activities

Goal 5: Preserve Targeted Farmland and Natural Areas

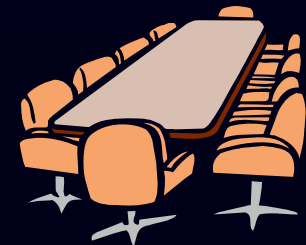
- Assist Planning and Zoning Division and local governments with preserving prime farmland in accordance with the 2011 adopted county Farmland Preservation Plan
- Minimize negative agricultural impacts from growing communities and wildlife populations
- Enforce county ordinances to protect existing natural areas
- Protect and restore wetlands and natural areas, using available cost-sharing programs.



Chapter 3 – Goals, Objectives and Planned Activities

Goal 6: Support Water Monitoring and Improve Public Access to Water Data

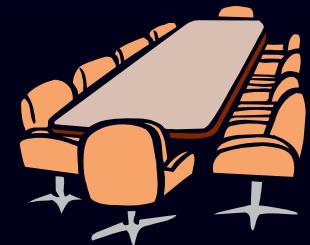
- Promote and sponsor water monitoring efforts
- Improve accuracy, usability and public access to water resource data



Chapter 3 – Goals, Objectives and Planned Activities

Goal 7: Reclaim Active Nonmetallic Mining

- Enforce the county nonmetallic mine reclamation ordinance
- Reclaim county gravel pit and prepare to sell property for industrial activities



Chapter 4 – Plan Implementation and Evaluation

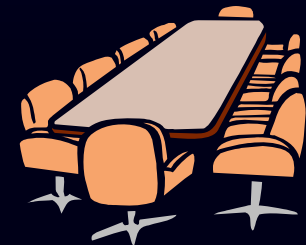
Procedures for implementing the Urban Nonpoint Pollution Performance Standards

Procedures for implementing the Agricultural Nonpoint Pollution Performance Standards

Estimated Program Costs

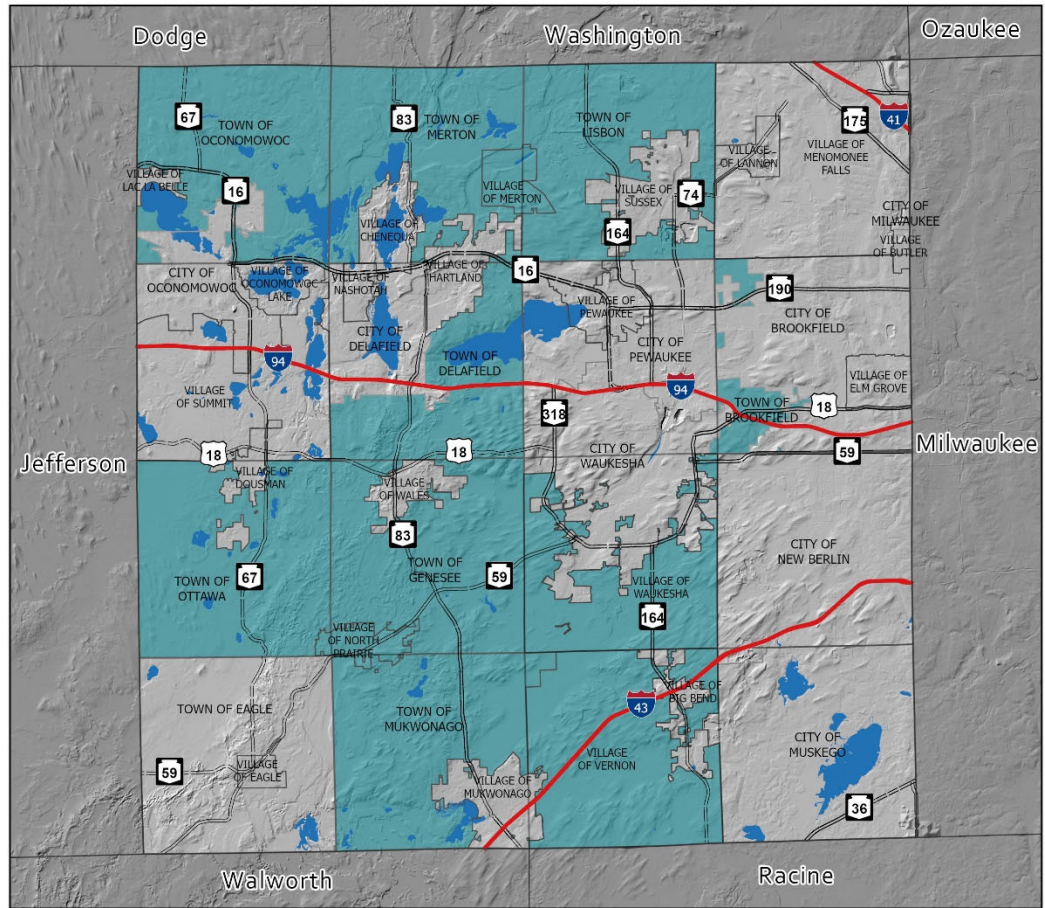
Monitoring and Evaluation

Impediments to Plan Implementation



**MAP #IV-1
 JURISDICTION of STORMWATER MANAGEMENT ORDINANCE
 WAUKESHA COUNTY**

Urban



Legend

Stormwater Ordinance Jurisdiction

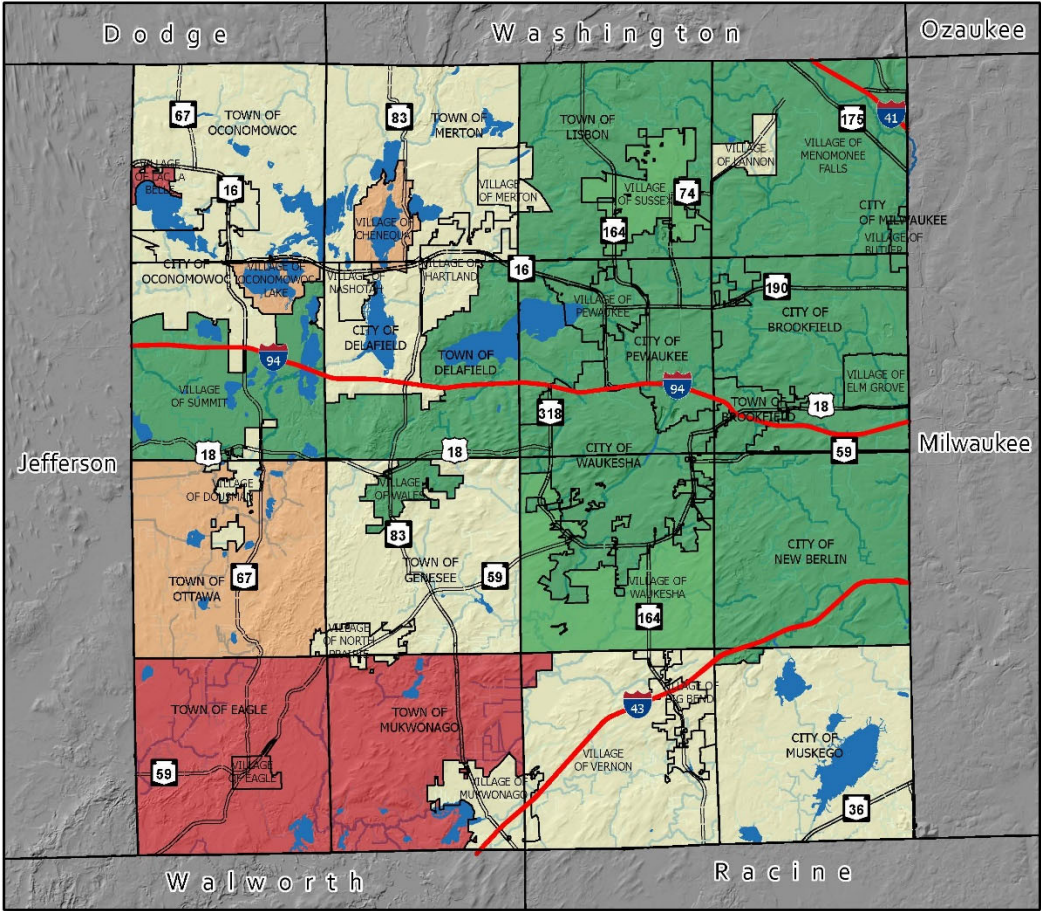


Source: Waukesha County, WI DNR, SEWRPC



**MAP #IV-2
MS4 DISCHARGE PERMITS under NR216 : 2021
WAUKESHA COUNTY**

Urban



Legend

- Phase I Community (13)
- Phase II Community (18 including Waukesha County)
- Exempted Communities (3)
- MS4 Permit Not Required (4)

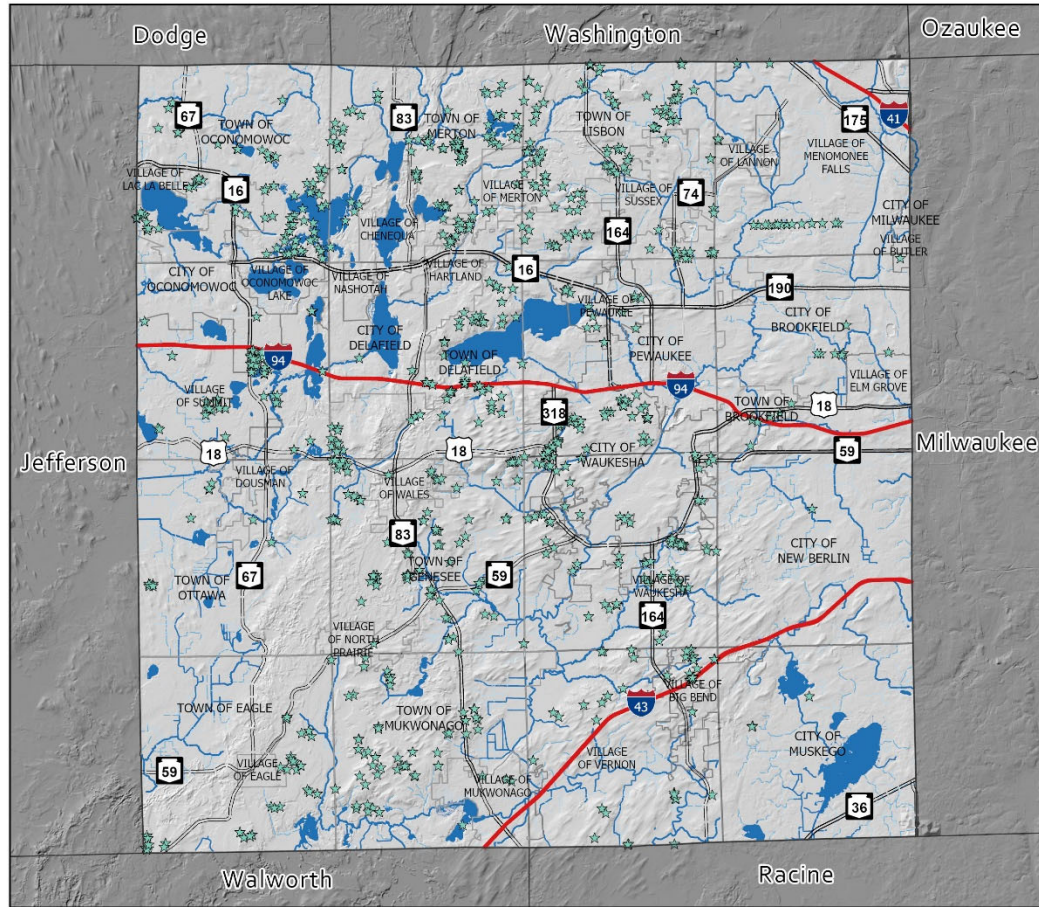
*Townships - Only portions meeting the Urbanized Area designation by the EPA

Source: Waukesha County, WI DNR, SEWRPC



**MAP #IV-3
STORMWATER BEST MANAGEMENT PRACTICES
ENTERED INTO THE WAUKESHA COUNTY DATABASE: 2021
WAUKESHA COUNTY**

Urban



Legend

- ★ Stormwater BMP

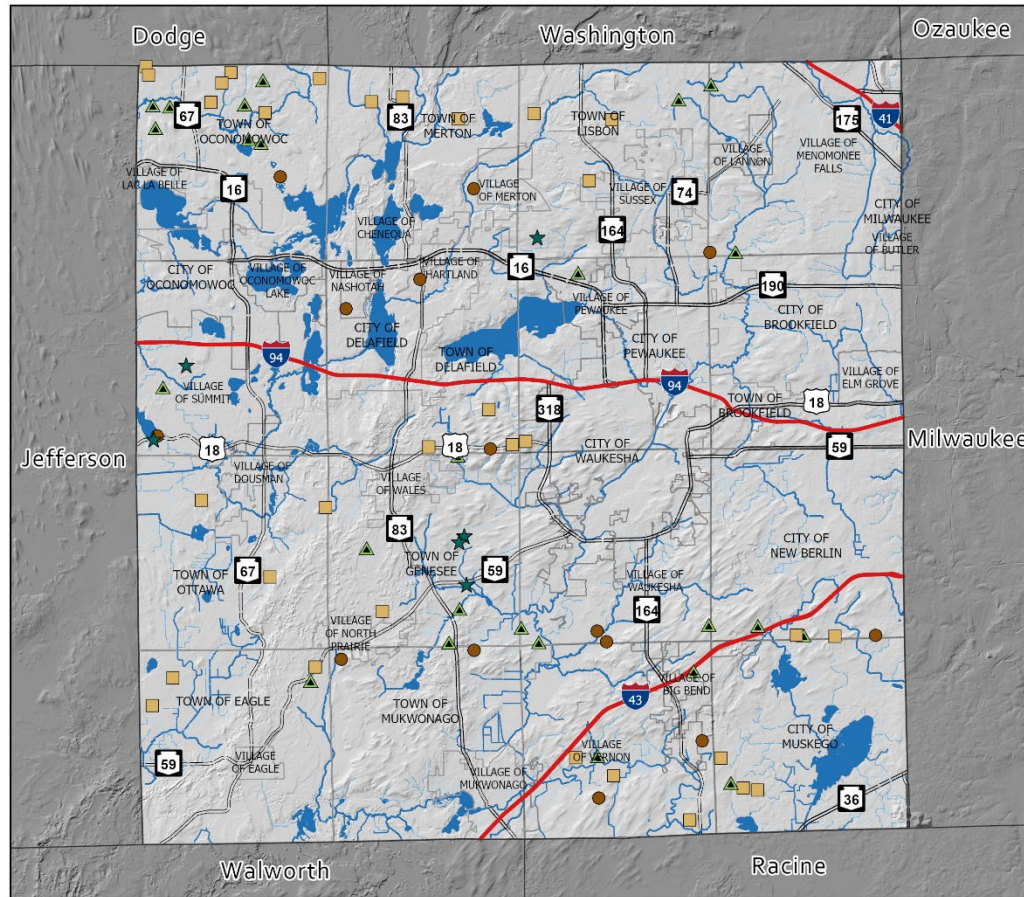


Source: Waukesha County, WI DNR, SEWRPC



**MAP #IV-4
LIVESTOCK OPERATIONS WITH GREATER THAN 40 ANIMAL UNITS
WAUKESHA COUNTY**

Rural



Livestock Type

- Beef (15)
- Dairy (32)
- ▲ Horses (25)
- ★ Other (6)

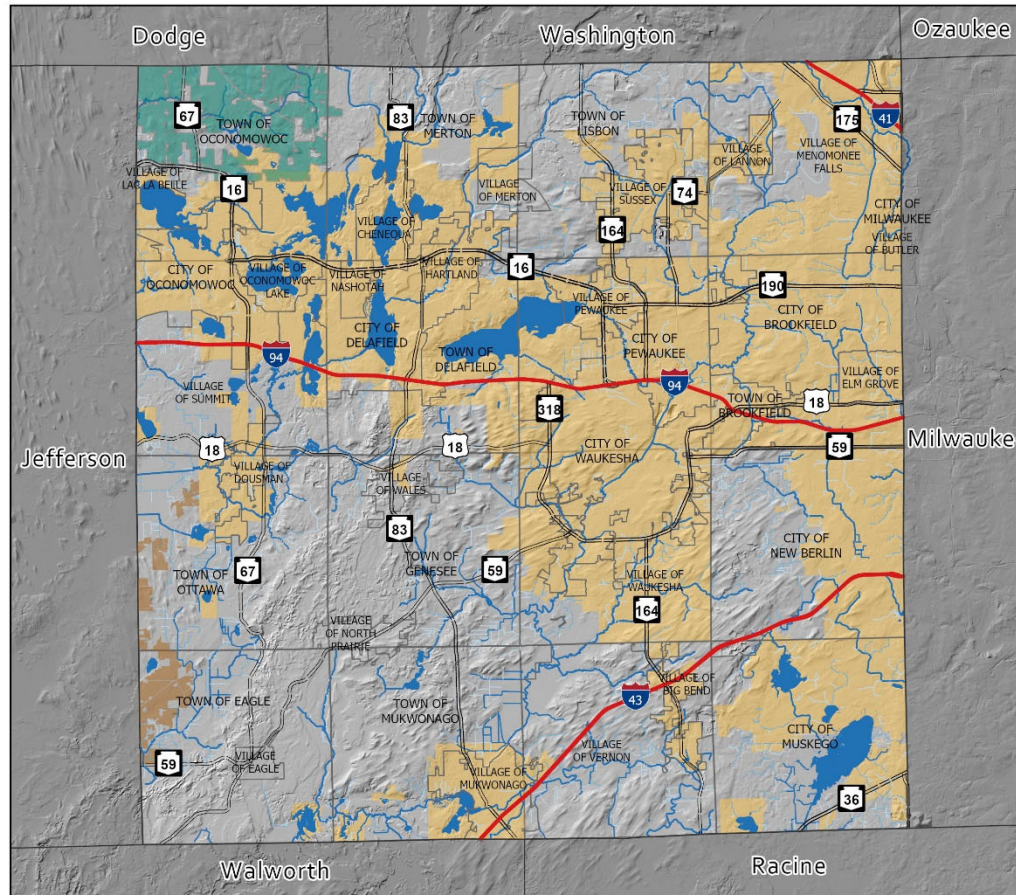


Source: Waukesha County, WI DNR, SEWRPC



**MAP IV-5
FARMLAND PRESERVATION AREAS
WAUKESHA COUNTY: 2021**

Rural



Legend

- Agricultural Enterprise Area (AEA) - 2021
- Farmland Preservation Areas - 2021
- Sewer Service Area



Source: Waukesha County, SEWRPC, WDNR & DATCP



Comments or Questions?

