

# Aquatic Invasive Species Update Washington & Waukesha Counties



**May 2021**

[erik.hanson@washcowisco.gov](mailto:erik.hanson@washcowisco.gov) [ehanson@waukeshacounty.gov](mailto:ehanson@waukeshacounty.gov)  
[Washington County Website](#) [Waukesha County Website](#)

---

## Hiring Update

Interns for Washington and Waukesha County have been hired! You will see them out conducting CBCW inspections at local boat launches starting Memorial Day weekend!

## Training Update

CBCW Trainings are coming up SOON! This year we will be offered both in person and virtual options to fit everybody's comfort level.

**Wednesday, May 26th: 9:30am-11:30am / VIRTUAL Contact AIS Coordinator for Link**

If your lake group has multiple individuals interested in CBCW training, please reach out to the new AIS Coordinator to schedule a private group training focused on your own lake!!

All 2021 Trainings are listed below:

### **Clean Boats, Clean Waters (CBCW) Volunteer Trainings:**

May 26th: 9:30 am VIRTUAL (Contact AIS Coordinator for Link)

June 1st: 4:30 pm Washington County: 333 E. Washington St. West Bend, WI 53095

June 3rd: 5 pm Waukesha County: 515 W. Moreland Rd. Waukesha 53188

June 5th: 9 am VIRTUAL (contact AIS Coordinator for Link)

### **Project RED: Riverine Early Detectors**

June 1st: 1 pm 333 E Washington St. West Bend, WI 53095

June 3rd: 1 pm 515 W. Moreland Rd. Waukesha, WI 53188

### **Citizen Lake Monitoring Network (CLMN)**

\*As needed. Contact AIS Coordinator to set up a date and time\*



## **New AIS Coordinator Message**

"I am super excited to get my feet wet in Wisconsin's lakes and rivers, apply my Western experience and learn about the great work all of you have been doing. Please don't hesitate to get in touch and help me get orientated. "

**Erik Hanson**

Your AIS Coordinator

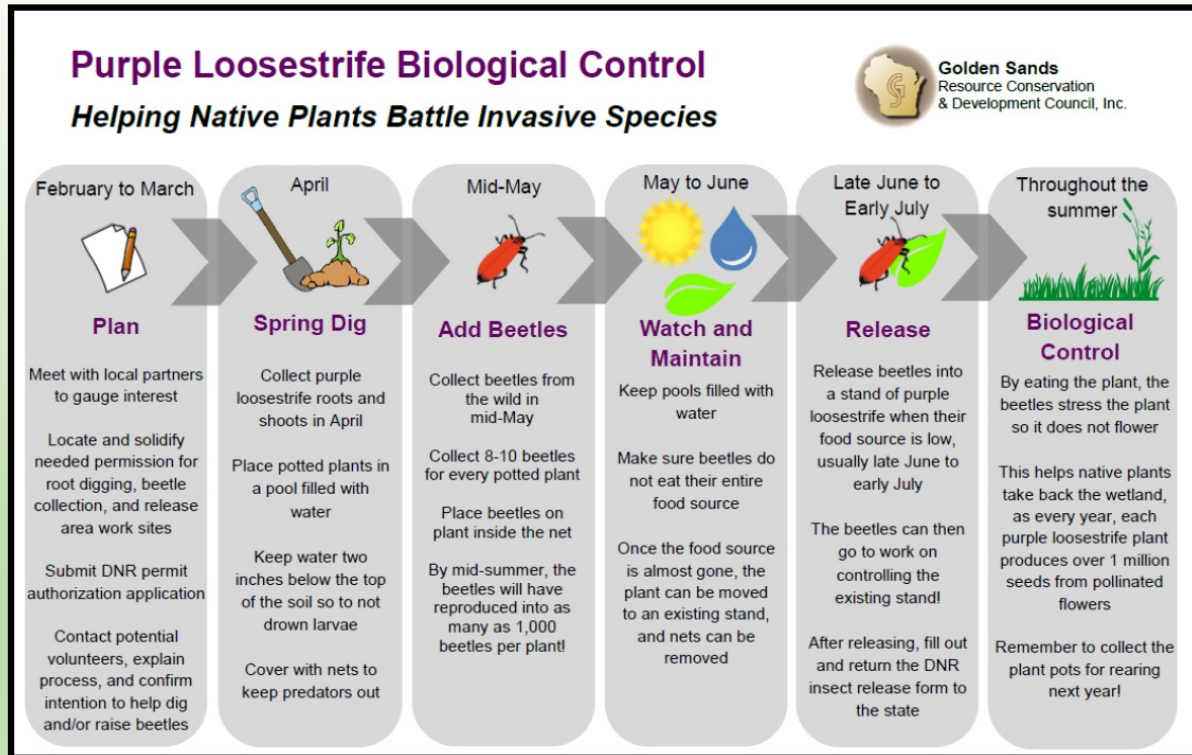
Erik Hanson was the AIS Coordinator for the Confederated Salish and Kootenai Tribes in Western Montana. Working with the Tribes and other partners he ran mandatory 24 hour a day highway watercraft inspection stations with dedicated enforcement, conducted early detection monitoring, instituted rapid response and control programs, developed the Flathead Lake Mussel Walk educational event and provided local input to advance Montana's AIS effort.

He has a Master's degree in Environmental Management, for which he co-authored the Oregon AIS Management Plan. He has served on professional panels to guide AIS efforts for Montana, Yellowstone National Park and the use of environmental DNA techniques for monitoring and early detection.

# Purple Loosestrife Update

If you would like more information about Purple Loosestrife, PL identification, or for PL Bio Control please visit the DNR website below:

<https://dnr.wisconsin.gov/topic/Invasives/loosestrife.html>



*Graphic provided by Golden Sands Resource Conservation & Development Council, Inc., member of the Wisconsin Aquatic Invasive Species Partnership*

## Lake of the Month: Ashippun Lake in Waukesha County





## Facts and Figures:

Name: Ashippun Lake

Waterbody ID (WBIC): 854300

Area: 94 ACRES

Maximum Depth: 35 feet

Mean Depth: 22 FEET

Bottom: 10% sand, 30% gravel, 0% rock, 60% muck

Hydrologic Lake Type: SPRING

County: Waukesha

Region: SE

Latitude, Longitude: 43.15757150, -88.47182730

Fish Present: Panfish, Largemouth Bass, Northern Pike, Carp, and Walleye

AIS Present: **Curly-Leaf Pondweed, Eurasian Water-Milfoil, White Perch, Zebra Mussel, Purple Loosestrife**



**AIS Efforts:** Ashippun Lake has an agreement with Waukesha County to hire a CBCW boat inspector during the summer months. The Ashippun Lake Protection and Rehabilitation District (PRD) goes above and beyond the 200 hour minimum for boat inspection hours on their landing. In 2020, during her first week on the job, CBCW boat inspector Leah Dimaggio discovered Chinese Mystery Snails at the launch and we are currently in the process of getting them verified with the WI-DNR. During a 2020 Early Detection Monitoring Survey on the lake, AIS Coordinator Sam Lammers and her county interns discovered a large amount of Purple Loosestrife around the little lake as well as a bit around the entire shoreline. The PRD has supported a decision to do some Purple Loosestrife Bio Control measures around the smaller lake to control some of the Purple Loosestrife spread around the lake. This project will take place this summer (2021)







Please Click Here to  
**SUBSCRIBE**  
to our Newsletter

*The Aquatic Invasive Species Program is a cooperative effort between Washington & Waukesha Counties, supported by grant funds from Wisconsin Department of Natural Resources and a number of generous local lake groups working to control the spread of AIS. Thank you for your support!*

For more information:

Email: [erik.hanson@washcowisconsin.gov](mailto:erik.hanson@washcowisconsin.gov)  
[ehanson@waukesha.wisconsin.gov](mailto:ehanson@waukesha.wisconsin.gov)

Washington County  
262-335-4806  
[www.washcowisconsin.gov/departments/planning\\_and\\_parks/land\\_resources](http://www.washcowisconsin.gov/departments/planning_and_parks/land_resources)

Waukesha County  
262-548-7818  
[www.waukesha.wisconsin.gov/ais](http://www.waukesha.wisconsin.gov/ais)