

# Aquatic Invasive Species Update Washington & Waukesha Counties



**March 2021** Email: [samantha.lammers@washcowisconsin.gov](mailto:samantha.lammers@washcowisconsin.gov)

[Washington County Website](#)

[Waukesha County Website](#)

## Purple Loosestrife Bio-control Begins Soon!

(Photos: Left-Beetles Right-Sam holding some PL at Ashippun Lake in 2020)

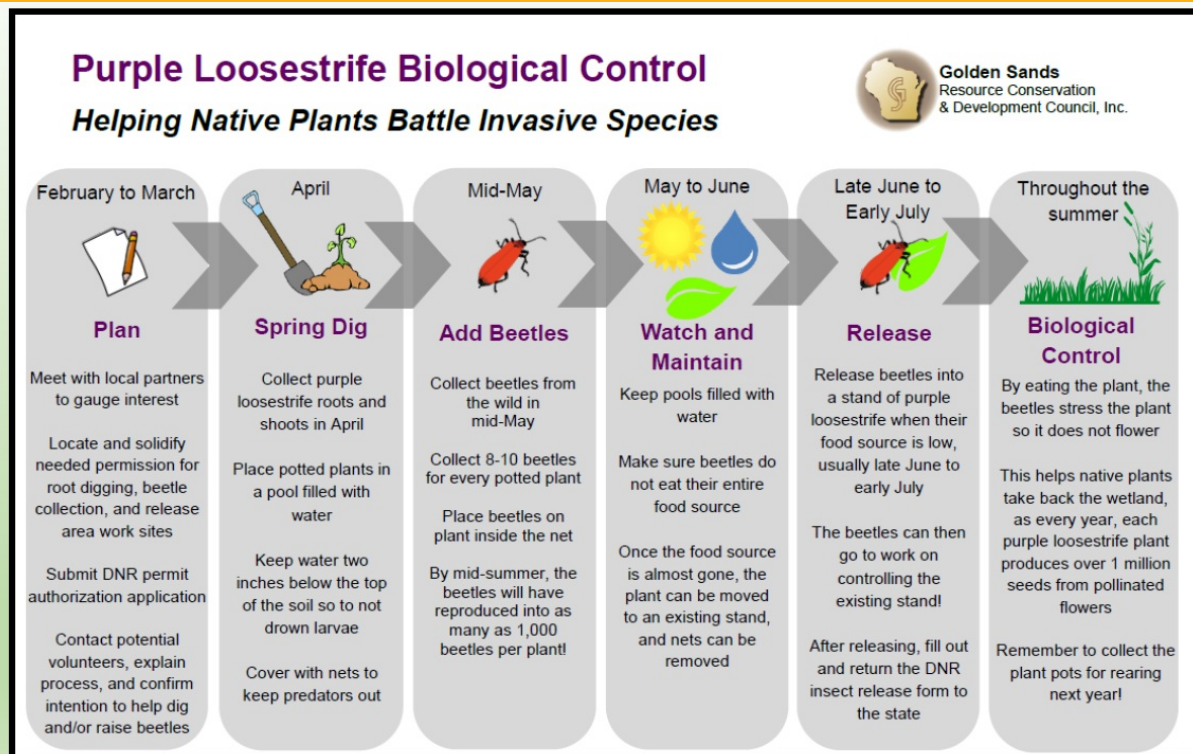


There are many ways to volunteer your time this year if you would like to help with the Purple Loosestrife Bio-Control project for 2021 that will be taking place in both Washington

and Waukesha Counties. Below is a timeline of the many events that make up this project. Volunteers are needed for each step so you can choose which steps you would like to be involved in!! My contact information is provided at the end bottom of this email.

If you would like more information about Purple Loosestrife, PL identification, or for PL Bio Control please visit the DNR website below:

<https://dnr.wisconsin.gov/topic/Invasives/loosestrife.html>



*Graphic provided by Golden Sands Resource Conservation & Development Council, Inc., member of the Wisconsin Aquatic Invasive Species Partnership*

## We are HIRING!!!

Washington and Waukesha Counties are now accepting applications for summer AIS interns!

We will be hiring for lake specific CBCW boat inspectors as well as summer AIS county interns. Here are the positions that we will be hiring for:

### Washington County:

1 County AIS Intern  
2 CBCW Boat Inspectors for Pike and Bark Lakes

### Waukesha County:

2 County AIS Interns

7 CBCW Boat Inspectors for Lac La Belle, Silver, Golden, Ashippun, Pretty, Nemahbins, and Low/Middle Geneese Lakes

Please visit the counties website employment opportunities page to learn more and apply!

[Washington County Employment Opportunities](#)

[Waukesha County Jobs](#)

Photo Below: Mohammad and Steven: 2020 County Interns for Waukesha County



Lake of the Month: **Oconomowoc Lake**

Name: Oconomowoc Lake  
Waterbody ID (WBIC): 849600  
Area: 818 ACRES  
Maximum Depth: 60 feet

Mean Depth: 32 FEET

Bottom: 10% sand, 80% gravel, 0% rock, 10% muck

Hydrologic Lake Type: DRAINAGE

County: Waukesha

Latitude, Longitude: 43.09884620, -88.453462

Fish Present: Panfish, Largemouth Bass, Smallmouth Bass, Northern Pike and Walleye

Invasive Species Present:

Eurasian Water-Milfoil, Hybrid Eurasian / Northern Water-Milfoil,  
Zebra Mussel, Spiny Naiad



For additional information on Oconomowoc Lake,  
check out the Village of Oconomowoc Lake Website:  
<http://www.oconlake.com/>



**Fun Fact:** Oconomowoc Lake has a deep, rich history of unique properties around the lake!

**AIS Efforts and Prevention:**

Oconomowoc Lake has very few AIS present, and what is present is quite common among many lakes in the area. Last year during an Early Detection Monitoring Survey, AIS Coordinator Samantha Lammers found Spiny Naiad, and invasive variation of the Naiad family and is working to get that vouchered and verified for the DNR website. Waukesha County interns spend time doing Clean Boats, Clean Waters boat inspections at the Oconomowoc Public Launch during the summer months. 56 CBCW hours were spent at Oconomowoc in 2020.

I take many beautiful pictures of all my lakes throughout the summer, but last year this picture from Oconomowoc Lake was my FAVORITE! This picture was taken on the 4<sup>th</sup> of July while updating some AIS signage and checking out some Yellow Iris (invasive shoreline plant pictured)



Please Click Here to  
**SUBSCRIBE**  
to our Newsletter

*The Aquatic Invasive Species Program is a cooperative effort between Washington & Waukesha Counties, supported by grant funds from Wisconsin Department of Natural Resources and a number of generous local lake groups working to control the spread of AIS. Thank you for your support!*

For more information:

Email: [samantha.lammers@washcowisco.gov](mailto:samantha.lammers@washcowisco.gov)

Washington County  
262-335-4800

[www.co.washington.wi.us/lcd](http://www.co.washington.wi.us/lcd)

Waukesha County  
262-896-8300

[www.waukeshacounty.gov/ais](http://www.waukeshacounty.gov/ais)