

# Aquatic Invasive Species Update Washington & Waukesha Counties



**February 2021** Email: [samantha.lammers@washcowisco.gov](mailto:samantha.lammers@washcowisco.gov)  
[Washington County Website](#)  
[Waukesha County Website](#)

## Volunteer Opportunities in 2021

Here are some volunteer opportunities that will be offered in Washington and Waukesha Counties this year, along with descriptions of each opportunity. Start looking at what interests you most and continue to look through these updates for additional information and dates of trainings in the near future! There is NO COST for any of these events :)

**Clean Boats, Clean Waters (CBCW):** The Clean Boats, Clean Waters program, sponsored by the Wisconsin Lakes Partnership, offers a series of training workshops across the state each spring and summer. This is one of the largest volunteer programs in the state of Wisconsin when it comes to AIS monitoring!

These workshops provide an opportunity to learn how and why educational awareness is so important in preventing the spread of AIS.

During the Clean Boats, Clean Waters workshop, resource professionals provide an overview of aquatic invasive species and instructions on how to organize an effective watercraft inspection program. Participants also practice how to have engaging conversation with boaters at the landing through role-playing. There is no cost to attend the workshop. Dates for 2021 are TBD.

**Citizen Lake Monitoring Network (CLMN):** The Citizen Lake Monitoring Network (CLMN) creates a bond between 1000+ citizen volunteers statewide and the Wisconsin Lakes Partnership. The goals are to collect high-quality Lake monitoring data, educate and empower volunteers, and share data to inform lake managers.

CLMN staff provide volunteers with the necessary equipment and training to conduct

these monitoring activities. Volunteers provide their time, expertise, energy, and a willingness to share information with their fellow lake residents or other lake users. The information gathered by these monitoring programs is used by WI-DNR and university biologists and researchers, UW-Extension, and other stakeholders. CLMN volunteers collect information on Water Quality, Water Clarity, Ice On/Off, Aquatic Invasive Species, and Native Plant Species.

**Project RED (Riverine Early Detectors):** Project RED is a River Alliance of Wisconsin program focused on the monitoring and mapping of invasive species in Wisconsin Rivers. During a Project RED training you will learn which invasive species threaten your local rivers, how to differentiate them from native look-a-likes. Project RED monitoring can be done by canoe, kayak, or on foot. We will help you choose priority monitoring locations and a monitoring schedule that are convenient to you and your group. You will also be provided with online data management tools through the Wisconsin DNR SWIMS database. There is no cost to attend this training.

**Snapshot Day 2021:** Snapshot day is another River Alliance of Wisconsin event that takes place one Saturday in August. This daylong event is a STATEWIDE effort for the early detection of invasive species. Volunteers who turn out for this event will be provided with quick hour-long training in aquatic invasive identification and collects. After that you will be left to investigate your neighborhood waters and collect important information on any potential spread of invasive species. Volunteers usually spend about 4 hours of the day total including training.

**Purple Loosestrife Bio Control:** This year we are hoping to find a few more volunteers to help us with our Purple Loosestrife Bio Control project in both Washington and Waukesha Counties. Volunteers will help with digging up Purple Loosestrife plants for potting and growing in spring. They will also help rear the beetles and help disperse them when they are ready to relocate! Must be flexible as the timeline is determined by weather, especially in the spring. Be prepared to get dirty and learn a TON!

---

## New Conservation Warden Contacts

There has been a lot of changes recently in the WI DNR-Bureau of Law Enforcement and Washington and Waukesha counties were no exception! Last year we had some full time Wardens in the area retire and their positions have since been filled. Here is the new contact information for anyone who has Conservation Warden Inquiries!!!  
(They are both named Steven S.... that's not confusing at ALL!)

Washington County: Steven Swiertz: 414-335-0289 [steven.swiertz@wisconsin.gov](mailto:steven.swiertz@wisconsin.gov)  
Waukesha County: Steven Sanidas: 262-574-2183 [steven.sanidas@wisconsin.gov](mailto:steven.sanidas@wisconsin.gov)

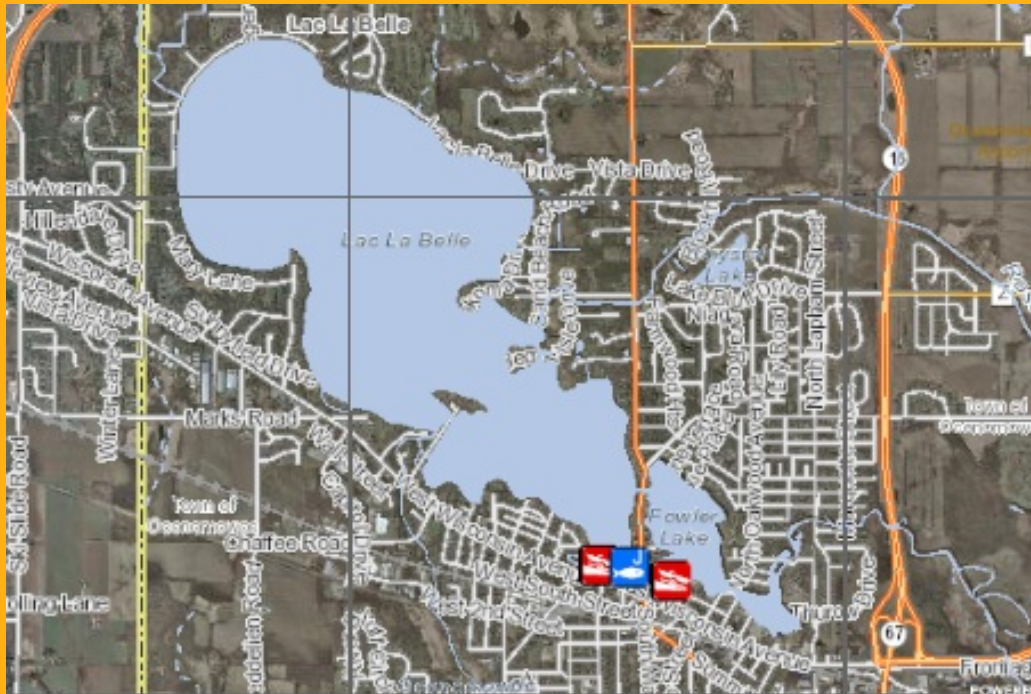
## Lake of the Month: Lac La Belle- Waukesha County

Name: Lac La Belle  
Waterbody ID (WBIC): 848800  
Area: 1154 ACRES  
Maximum Depth: 45 feet  
Mean Depth: 11 FEET  
Bottom: 10% sand, 80% gravel, 0% rock, 5% muck  
Hydrologic Lake Type: DRAINAGE  
County: Waukesha

Latitude, Longitude: 43.12986320, -88.51854090

Fish Present: Panfish, Largemouth Bass, Smallmouth Bass, Northern Pike and Walleye

AIS Present: Asiatic Clam (*Corbicula*), Curly-Leaf Pondweed, Eurasian Water-Milfoil, Freshwater Jellyfish, Purple Loosestrife, Reed Manna Grass, Yellow Iris, Zebra Mussel



### Interesting Facts about LLB

- Lac La Belle literally translates to “the beautiful lake”
- In some years, brown pelicans use Lac La Belle as a stopping point during their migration. They typically land on the northern end of the lake.
- There used to be houses on the island near the boat launch.
- The City installed nice piers for boat launching and some extra boat docking piers so that boaters can dock their boats and enjoy activities in the City.

Lac La Belle is a large lake in Waukesha County that has a LOT to offer!

Dan Bauer, Lac La Belle Management District Chair had this to say about LLB's diversity: “We love our lake. The size of the lake is perfect for family water activities. It is a great lake for water sports, boating, and fishing. Lake has excellent shallow areas that are only waist deep with sandy bottoms. We are a trophy lake, only very large fish may be kept. We enjoy fishing bluegill and Crappie with the Grandkids.”



#### **AIS Monitoring and Prevention:**

In 2020, Lac La Belle began their CBCW program at the City Beach Launch. With the help and supervision of Jeff Bode, interns completed over 200 hours of CBCW boat inspections on the lake. We plan for even more hours next year! Feedback from the interns said that they were very impressed by the initiative and passion that all boaters and anglers already had for AIS prevention on LLB. It was one of their favorite (and BUSIEST) launches last year.

This past summer, to support a recent full point intercept survey that was completed on Lac La Belle, Sam, Mohammad, and Steven (with the gracious assistance of the weed harvester team!) completed a survey on Fowler Lake as well. Both Lakes were void of Starry Stonewort which was a big relief to all...early detection monitoring will continue in 2021.

\*\*A huge shout out to Jeff Bode, Sally Keefe, and Dan Bauer for assisting (fun facts and perspectives) on Lac La Belles Lake of the Month.



Please Click Here to  
**SUBSCRIBE**  
to our Newsletter

*The Aquatic Invasive Species Program is a cooperative effort between Washington & Waukesha Counties, supported by grant funds from Wisconsin Department of Natural Resources and a number of generous local lake groups working to control the spread of AIS. Thank you for your support!*

For more information:

Email: [samantha.lammers@washcowisco.gov](mailto:samantha.lammers@washcowisco.gov)

Washington County  
262-335-4800

[www.co.washington.wi.us/lcd](http://www.co.washington.wi.us/lcd)

Waukesha County  
262-896-8300

[www.waukeshacounty.gov/ais](http://www.waukeshacounty.gov/ais)