

WAUKESHA COUNTY

ANNUAL COMPREHENSIVE FINANCIAL REPORT



For the Year Ending December 31, 2020

WAUKESHA, WISCONSIN

Waukesha County Executive

Paul Farrow

(Term Expires April 2023)

Board of Supervisors

(Terms Expire April 2022)

Paul L. Decker.....Chairperson
James A. HeinrichFirst Vice-Chairperson
David W. Swan Second Vice-Chairperson

James Batzko
Michael A. Crowley
Kathleen M. Cummings
Timothy Dondlinger
Tyler J. Foti
Joel R. Gaughan
Keith Hammitt
Christine M. Howard
Darlene M. Johnson
Jacob LaFontain
Thomas A. Michalski

William A. Mitchell
Christine Mommaerts
Richard Morris
Larry Nelson
Duane E. Paulson
Thomas J. Schellinger
Jeremy Walz
Steve Whittow
Peter M. Wolff
Ted Wysocki
David D. Zimmermann

About the cover:

Sunset at Waukesha County Park System's Retzer Nature Center. The property was donated to the County in 1973 by Florence Retzer so it could be preserved and enjoyed by future generations. The nature center grounds now total 477 acres. There are over 5 miles of trails throughout a variety of restored ecosystems, such as prairies, pine plantations, oak savanna, fen, pond, stream and gardens. The Environmental Learning Center building houses interactive exhibits and displays on ecology, wildlife, land management, recycling, waste reduction, water conservation and more. The School District of Waukesha's Horwitz - DeRemer Planetarium is also housed in the building.

Cover photos by:

Andrew Thelke, Director of Administration

Composition and Layout by:

Nicole Armendariz, Press Secretary/PIO to the County Executive

The entire ACFR can be found at

<https://www.waukeshacounty.gov/administration/accounting/>

**ANNUAL COMPREHENSIVE FINANCIAL REPORT
OF THE
COUNTY OF WAUKESHA, WISCONSIN
FOR THE YEAR ENDED
DECEMBER 31, 2020**

**PREPARED BY:
DEPARTMENT OF ADMINISTRATION
ACCOUNTING DIVISION**

WAUKESHA COUNTY, WISCONSIN
ANNUAL COMPREHENSIVE FINANCIAL REPORT
TABLE OF CONTENTS
Year Ended December 31, 2020

INTRODUCTORY SECTION

Letter of Transmittal from County Executive and Director of Administration.....	1
GFOA Certificate of Achievement in Financial Report	9
Department Heads of Waukesha County.....	11
Officials of Waukesha County.....	12
Organizational Chart.....	14

FINANCIAL SECTION

Independent Auditors' Report.....	15
Required Supplementary Information	
Management's Discussion and Analysis.....	21
Basic Financial Statements	
Government-wide Financial Statements:	
Statement of Net Position.....	35
Statement of Activities.....	36
Fund Financial Statements:	
Balance Sheet – All Governmental Funds	39
Reconciliation of the Balance Sheet – Governmental Funds to the Statement of Net Position	40
Statement of Revenues, Expenditures and Changes in Fund Balances – All Governmental Funds.....	41
Reconciliation of the Statement of Revenues, Expenditures and Changes in Fund Balances – Governmental Funds to the Statement of Activities.....	42
Statement of Net Position – All Proprietary Funds.....	46
Statement of Revenues, Expenses and Changes in Net Position – All Proprietary Funds.....	48
Statement of Cash Flows – All Proprietary Funds.....	50
Statement of Fiduciary Net Position – Custodial Funds.....	55
Statement of Changes in Fiduciary Net Position – Custodial Funds	56
Notes to Basic Financial Statements.....	57
Required Supplementary Information:	
General Fund:	
Schedule of Revenues, Expenditures and Changes in Fund Balance – Budget and Actual – General Fund.....	101
Schedule of Proportionate Share of the Net Pension Liability (Asset) Wisconsin Retirement System. .	104
Schedule of Employer Contributions – Wisconsin Retirement System.....	104
Notes to Required Supplementary Information.....	105
Supplementary Information:	
Non-Major Special Revenue Funds:	
Combining Balance Sheet – All Non-Major Special Revenue Funds.....	111
Combining Statement of Revenues, Expenditures and Changes in Fund Balance – All Non-Major Special Revenue Funds.....	112
Schedule of Revenues, Expenditures and Changes in Fund Balance – Budget and Actual – Aging and Disability Resource Center Contract Fund.....	113
Schedule of Revenues, Expenditures and Changes in Fund Balance – Budget and Actual – County Library Fund.....	114
Schedule of Revenues, Expenditures and Changes in Fund Balance – Budget and Actual – Walter Tarmann Fund.....	115
Schedule of Revenues, Expenditures and Changes in Fund Balance – Budget and Actual – Transportation Fund.....	116

WAUKESHA COUNTY, WISCONSIN
ANNUAL COMPREHENSIVE FINANCIAL REPORT
TABLE OF CONTENTS
Year Ended December 31, 2020

FINANCIAL SECTION (CONTINUED)

Supplementary Information (Cont.):

Non-Major Special Revenue Funds (Cont.):

Schedule of Revenues, Expenditures and Changes in Fund Balance – Budget and Actual – Community Development Fund	117
Schedule of Revenues, Expenditures and Changes in Fund Balance – Budget and Actual – Workforce Innovation Opportunity Act Fund	118
Schedule of Revenues, Expenditures and Changes in Fund Balance – Budget and Actual – Workforce Development Center Fund	119

Debt Service Fund:

Schedule of Revenues, Expenditures and Changes in Fund Balance – Budget and Actual – Debt Service Fund	123
-----------------------------------------------------------------------------------------------------------------	-----

Capital Projects Fund:

Schedule of Revenues, Expenditures and Changes in Fund Balance – Budget and Actual – Capital Projects Fund	127
---------------------------------------------------------------------------------------------------------------------	-----

Non-Major Enterprise Funds:

Combining Statement of Net Position – All Non-Major Enterprise Funds.....	131
Combining Statement of Revenues, Expenses and Changes in Net Position – All Non-Major Enterprise Funds.....	132
Combining Statement of Cash Flows – All Non-Major Enterprise Funds.....	133

Internal Service Funds:

Combining Statement of Net Position – All Internal Service Funds.....	138
Combining Statement of Revenues, Expenses and Changes in Net Position – All Internal Service Funds.....	140
Combining Statement of Cash Flows – All Internal Service Funds.....	142

Fiduciary Funds:

Combining Statement of Fiduciary Net Position – Custodial Funds.....	148
Combining Statement of Changes in Fiduciary Net Position – Custodial Funds.....	150

Component Unit:

Balance Sheet – Component Unit – Bridges Library System Fund	155
Reconciliation of the Balance Sheet to the Statement of Net Position – Component Unit.....	156
Schedule of Revenues, Expenditures and Changes in Fund Balances – Budget and Actual – Component Unit – Bridges Library System Fund	157
Reconciliation of the Statement of Revenues, Expenditures and Changes in Fund Balances Statement of Activities – Component Unit	158

General Long Term Debt:

Schedule of Long Term Debt.....	162
Schedule of Debt Service Requirements.....	164

Capital Assets Used in the Operation of Governmental Funds:

Capital Assets Used in the Operation of Governmental Funds.....	169
Schedule by Function and Activity.....	170
Schedule of General Capital Assets by Function and Activity.....	171
Accumulated Depreciation of Capital Assets Used in the Operation of Governmental Funds – Schedule By Function and Activity.....	172

WAUKESHA COUNTY, WISCONSIN
ANNUAL COMPREHENSIVE FINANCIAL REPORT
TABLE OF CONTENTS
Year Ended December 31, 2020

STATISTICAL SECTION

Table 1 – Net Position by Component – Last Ten Fiscal Years.....	176
Table 2 – Changes in Net Position – Last Ten Fiscal Years.....	178
Table 3 – Fund Balances - Governmental Funds - Last Ten Fiscal Years	182
Table 4 – Changes in Fund Balances – Governmental Funds – Last Ten Fiscal Years.....	184
Table 5 – Equalized Value of Taxable Property – Last Ten Fiscal Years.....	187
Table 6 – Direct and Overlapping Property Tax Rates – Last Ten Fiscal Years.....	188
Table 7 – Principal Taxpayers – 2020 and Nine Years Prior.....	190
Table 8 – Property Taxes Levied and Collections – Last Ten Fiscal Years.....	191
Table 9 – Ratio of Outstanding Debt to Equalized Valuation and Debt Per Capita – Last Ten Fiscal Years.....	193
Table 10 – Legal Debt Margin Information - Last Ten Fiscal Years.....	194
Table 11 – Computation of Direct and Overlapping Debt.....	196
Table 12 – Demographic and Economic Statistics – Last Ten Fiscal Years.....	198
Table 13 – Ten Largest Employers – 2020 and Nine Years Prior.....	199
Table 14 – Full-Time Equivalent Budgeted County Positions by Functional Area – Last Ten Fiscal Years.....	200
Table 15 – Miscellaneous Operating Indicators – Last Ten Fiscal Years.....	202
Table 16 – Capital Asset Statistics by Functional Area – Last Ten Fiscal Years.....	204

Paul F. Farrow
County Executive



WAUKESHA COUNTY
OFFICE OF THE COUNTY EXECUTIVE

June 11, 2021

The Honorable Chairperson of the County Board and
Members of the County Board of Supervisors and
Citizens of the County of Waukesha
County of Waukesha
Waukesha, Wisconsin

Ladies and Gentlemen:

We are pleased to submit the Annual Comprehensive Financial Report (ACFR) of the County of Waukesha, Wisconsin for the fiscal year ended December 31, 2020. Waukesha County management is responsible for all information presented in the Annual Comprehensive Financial Report and to the best of our knowledge and belief, the enclosed data is accurate in all material respects and is reported in a manner designed to present fairly the financial position and results of operations of the various funds of the County. All disclosures necessary to enable the reader to gain an understanding of the County's financial activities have been included.

This report consists of management's representations concerning the finances of the County. Consequently, management assumes full responsibility for the completeness and reliability of all the information presented in this report. To provide a reasonable basis for making these representations, management of the County has established a comprehensive internal control framework that is designed both to protect the County's assets from loss, theft, or misuse and to compile sufficient reliable information for the preparation of the County's financial statements in conformity with GAAP. Because the cost of internal controls should not outweigh their benefits, the County's comprehensive framework of internal controls has been designed to provide reasonable rather than absolute assurance that the financial statements will be free from material misstatement. As management, we assert that, to the best of our knowledge and belief, this financial report is complete and reliable in all material respects.

The ACFR represents the culmination of all budgeting and accounting activities engaged in by management during the year, covering all funds of the County and its financial transactions. It is organized into three sections: Introductory, financial, and statistical.

- The introductory section includes this transmittal letter, the County's organizational chart and a list of principal officials.
- The financial section includes the independent auditors' report, management's discussion and analysis (MD&A), the audited basic financial statements, disclosure notes, required supplementary information, and supporting statements and schedules necessary to fairly present the financial position and the results of operations of the County in conformity with generally accepted accounting principles. The MD&A is prepared by management to provide a narrative introduction, overview, and analysis to accompany the basic financial statements. This letter of transmittal is designed to complement the MD&A and should be read in conjunction with it.
- The statistical section includes selected financial and demographic information, typically presented on a multi-year basis.

County policy, in accordance with state and federal requirements, is to provide for an annual audit of the financial records of the government by a competent certified public accountant. In addition to meeting the requirements set forth above, the audit was also designed to meet the requirements of the Title 2 U.S. Code of Federal Regulations Part 200, Uniform Administrative Requirements, Cost Principles, and Audit Requirements for Federal Awards (Uniform Guidance) and the State Single Audit Guidelines issued by the Wisconsin Department of Administration. The independent auditors' report on the basic financial statements is included in the financial section of this report. The auditors' reports related specifically to the single audit are included in a separately issued single audit report.

PROFILE OF THE GOVERNMENT

Waukesha County was incorporated in 1846 under the General Laws of the State of Wisconsin. Since 1991, the County has operated under a County Executive form of government. The County Executive is responsible for the administrative functions of county government. A Board of Supervisors is the governing body of the County and is responsible for the legislative control of the County. The County provides a full range of services, which include justice and public safety; health and human services; environment, parks and education; public works; and general government services.

The County is required to undergo an annual single audit in conformity with the provisions of the Title 2 U.S. Code of Federal Regulations Part 200, Uniform Administrative Requirements, Cost Principles, and Audit Requirements for Federal Awards (Uniform Guidance) and the State Single Audit Guidelines issued by the Wisconsin Department of Administration. Information related to the single audit, including the schedule of expenditures of federal and state awards, findings and recommendations, the independent auditors' reports on internal controls and compliance with applicable laws and regulations, is available as a separate document.

FACTORS AFFECTING FINANCIAL CONDITION

Local Economy

Waukesha County is located in southeastern Wisconsin, directly west of Milwaukee County and 100 miles northwest of Chicago. The County has the third highest equalized property tax base and is the State's third most populous county. The County is second in the State for per capita income. The County covers an area of 576 square miles and consists of 8 cities, 21 villages and 9 towns. The City of Milwaukee (one of the eight cities) has one parcel, a manufacturing plant, in Waukesha County on property annexed to allow access to Milwaukee sewer and water. The County's 2020 population is 406,785.

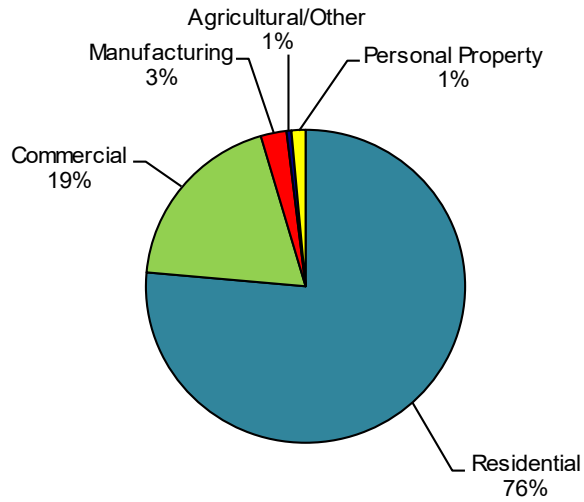
The County's history of sound financial management, a diverse and growing tax base, low unemployment, and a low debt burden suggest why Moody's Investors Service and Fitch, Inc. have enough confidence in the County to issue the highest rating of Aaa/AAA respectively on the County's long-term debt.

The County's equalized property value increased by 5.2% from the 2019 valuation. In 2020, the County experienced the seventh consecutive tax base valuation increase since 2008. Prior to 2009, the County had not experienced a tax base reduction in over 30 years. In 2020, the equalized property value covered and exceeded the level reached before the years of reduction. Annual changes are shown in the table below.

<u>Year</u>	<u>Equalized Value (including TID's)</u>	<u>% Change</u>
2020	\$62,620,157,900	5.2%
2019	\$59,540,912,600	5.3%
2018	\$56,536,637,800	4.4%
2017	\$54,158,131,600	4.3%
2016	\$51,937,555,000	3.5%
2015	\$50,187,624,500	3.8%

The chart on the following page shows the change in the equalized value of property by classification over the past five years. Residential classifications had the largest increase in value from the 2019 valuation, with an increase of \$2.7 billion, or 6% which was mostly inflation.

WAUKESHA COUNTY, WISCONSIN
Equalized Value by Classification
(Includes Tax Incremental District Value)
2020



Mix of Equalized Value by Class of Property
(Millions of Dollars)

<u>Real Estate</u>	<u>2020</u>	<u>2015</u>	<u>% Change</u>
Residential	47,857	37,730	26.8%
Commercial	11,935	9,642	23.8%
Manufacturing	1,628	1,433	13.6%
Agricultural/Other	313	280	11.8%
Total Real Estate	61,733	49,085	25.8%
Personal Property	887	1,127	-21.3%
Grand Total	62,620	50,212	24.7%

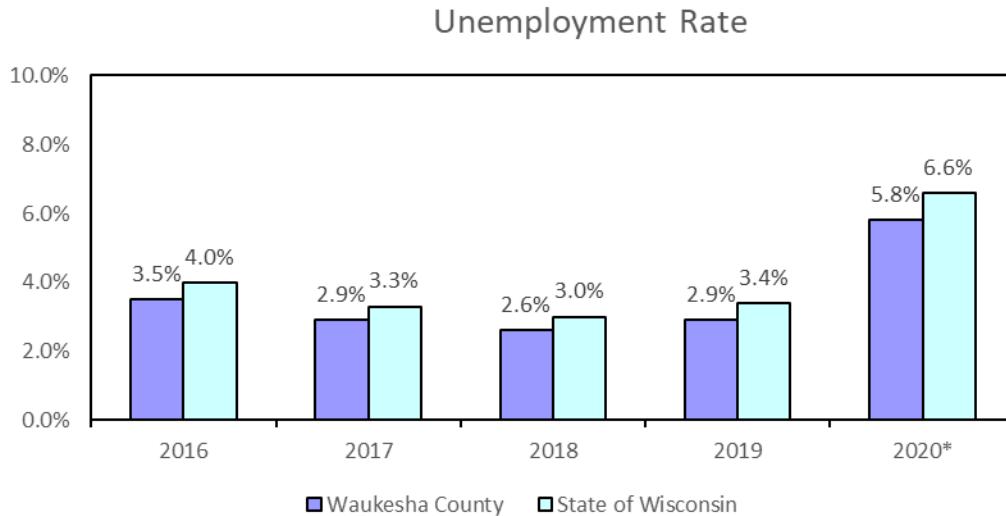
Source: Wisconsin Department of Revenue

Residential property accounts for approximately 76% of the County’s total tax base, so the value of residential building permits has been a good indicator of future year tax base increases.

Waukesha County		
Residential Permits		
<u>Year</u>	<u>Value in Thousands</u>	<u>Number</u>
2020*	\$356,372	808
2019	354,686	879
2018	437,265	1,061
2017	351,821	855
2016	365,330	953

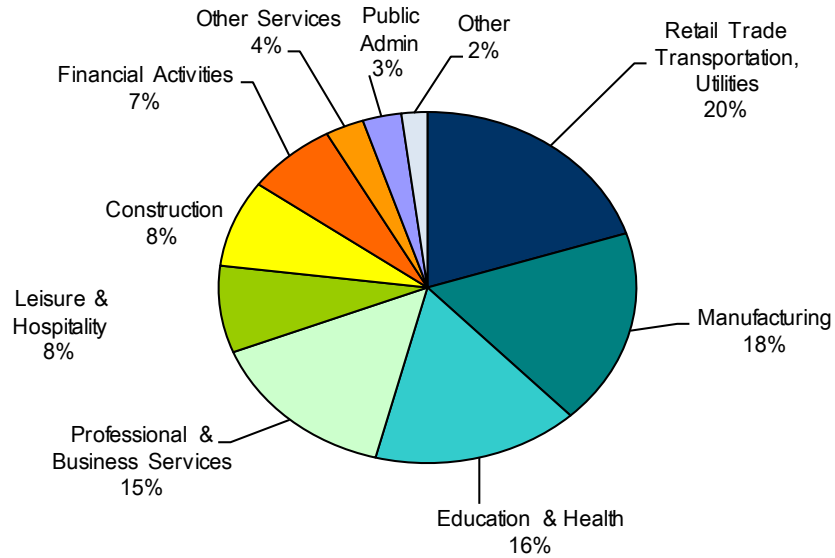
Source: U.S. Department of Commerce
*Preliminary

As the chart below shows, the County unemployment rate has remained consistently lower than the State of Wisconsin.



*Preliminary. Figures reflect employment impact as a result of COVID-19.
 Note: Prior-year figures may be revised according to the Bureau of Labor Statistics.
 Source: U.S. Department of Labor – Bureau of Labor Statistics

**WAUKESHA COUNTY, WISCONSIN
2020 Employment Diversification**



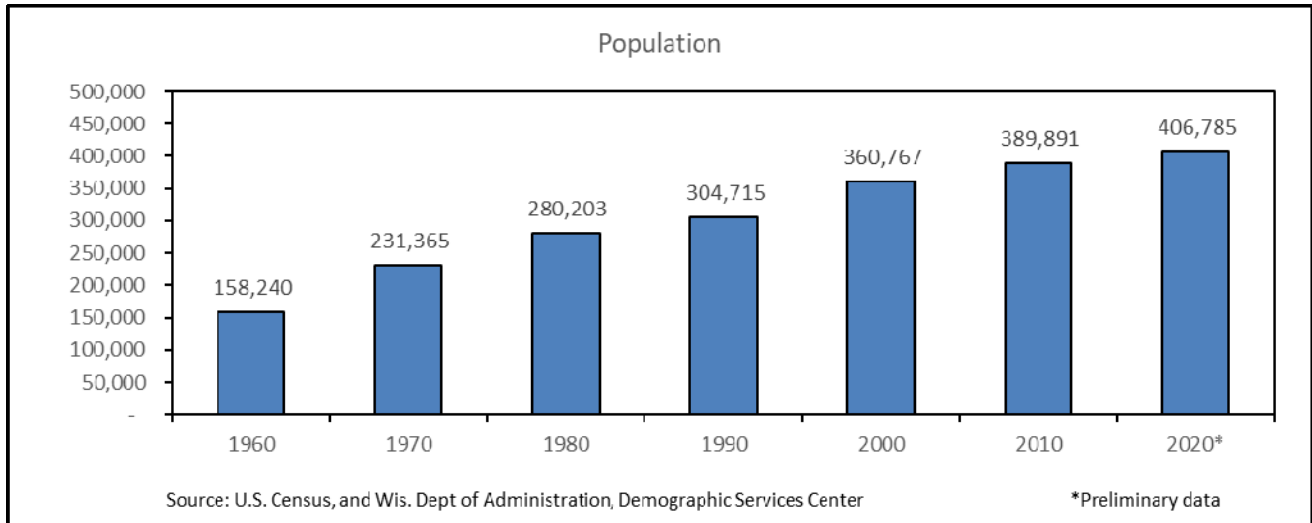
Number of Employees in Selected Categories

	2020 (1) (NAICS)	2019 (NAICS)
Retail Trade, Transportation, Utilities	47,919	50,473
Manufacturing	40,896	43,915
Education & Health	38,346	43,086
Professional & Business Services	33,800	35,599
Leisure & Hospitality	19,692	21,811
Construction	18,570	17,926
Financial Activities	15,935	15,811
Other Services	7,566	8,580
Public Administration	6,663	5,947
Other	4,180	4,532
TOTAL	233,567	247,680

(1) 2020 numbers are as of 3rd quarter, 4th quarter is not yet available

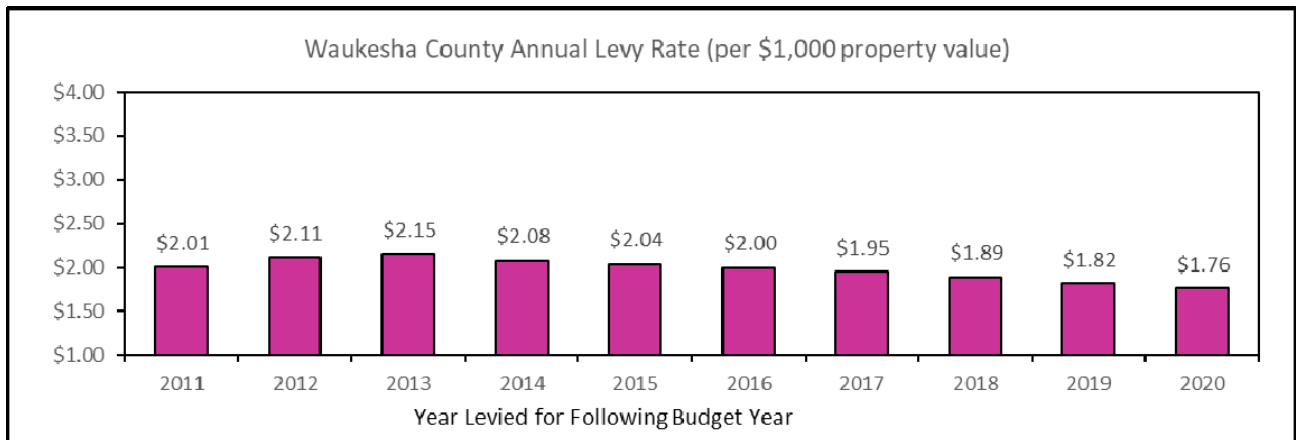
Source: The Wisconsin Department of Workforce Development, Bureau of Workforce Information

Population has continued to increase. The 2020 population is estimated at 406,785, an increase of 4% from the 2010 census.



Property Tax Levy Rate

The County's tax levy rate, which had decreased for 21 consecutive years--from tax year 1989 to tax year 2007--increased in the six-year period from 2008-2013 and decreased in 2014-2020 due to an increase in property values and a small tax levy change.



The County also has available an unlevied 0.5% local option sales tax, with an annual estimated value in excess of \$38 million.

Tax Levy Limits

Wisconsin law limits local tax levy increases to the County's increase in its total property tax levy by the percentage change in the County growth in equalized value based on the net new construction value between the previous year and the current year. The 2020 Waukesha County Budget meets the tax levy limit.

See note 3 for further information.

Long Term Financial Planning

To plan for the future, the County engages in a strategic planning process which focuses on long term planning and the desire to be a mission driven organization continuously improving its services and operations.

The County develops a five-year capital projects and debt financing plan. In addition, a five-year operating budget plan is developed which incorporates key assumptions, significant strategic budget initiatives and budget drivers.

The County has processes to identify and plan for recurring operational needs for the following: building and grounds maintenance; vehicle and equipment replacements; technology and transportation infrastructure, jail equipment replacement and highway pavement maintenance.

Major Initiatives

The 2021-2025 Capital Projects Plan is estimated to cost \$99.6 million for a total of 41 projects. This includes the remaining \$1.6 million for the first phase (2021) of a two-phase construction on eight new courtrooms and \$46.3 million for the beginning of the second phase of construction (remodel of the current courthouse) (2021-2025). The plan includes \$4.2 million dedicated to existing park roadways maintenance and \$1.9 million for a new 3.5-mile trail connecting city of Pewaukee to city of Brookfield. The project is the first phase to create a north-south connector trail. The new trail is being mostly funded in federal, state and municipal revenues, covering approximately 90% of the project costs. Another \$42.6 million or 43% of planned 2021-2025 capital spending is dedicated to highway improvements. This will be combined with \$16.1 million of Federal funds. Federal funding for those types of projects is not included in the County Budget since it is managed and accounted for by the State Department of Transportation with the County paying its share directly to the state.

Financial Information

Management of the County is responsible for establishing and maintaining a system of internal controls designed to ensure that the assets of the County are protected from loss, theft, or misuse and to ensure that adequate accounting data is compiled to allow for the preparation of financial statements in conformity with generally accepted accounting principles. The system of internal controls is designed to provide reasonable but not absolute assurance that these objectives are met. The concept of reasonable assurance recognizes that: (1) the cost of the control should not exceed the benefits likely to be derived; and (2) the valuation of costs and benefits requires estimates and judgments by management.

Budgeting Controls

The County maintains budgetary controls, with the objective of ensuring compliance with legal provisions as embodied in the annual appropriations budget, which is adopted by the County's Board of Supervisors and approved by the County Executive. Activities of the General, Special Revenue, Debt Service, Capital Projects, Enterprise and Internal Service funds are included in the annual appropriation budget. Budgetary control is maintained by a formal appropriation and encumbrance system. Expenditures cannot legally exceed appropriations at the agency level, pursuant to s65.90, Wisconsin State Statutes. Proprietary fund budget controls are maintained at the agency/fund level. However, the County has chosen a more restrictive control within agency budgets in the governmental (general and special revenue) funds. The annual budget approved by the County Board is by agency appropriation unit in each fund. An appropriation unit is a group of account classes (e.g. personnel, operating, interdepartmental) within an agency. Purchase orders and/or payment vouchers which would exceed the appropriation unit are not released until additional appropriations are available. As demonstrated by the statements included in the financial section of this report, the County continues to meet its responsibility for sound financial management.

AWARDS AND ACKNOWLEDGEMENTS

Awards

The Government Finance Officers Association of the United States and Canada (GFOA) awarded a Certificate of Achievement for Excellence in Financial Reporting to the County for its annual comprehensive financial reports for the fiscal year ended December 31, 2019. This was the thirty-second consecutive year that the County has achieved this prestigious award. In order to be awarded a Certificate of Achievement, a government must publish an easily readable and efficiently organized annual comprehensive financial report. This report must satisfy both generally accepted accounting principles and applicable legal requirements.

A Certificate of Achievement is valid for a period of one year only. We believe that our current annual comprehensive financial report continues to meet the Certificate of Achievement Program's requirements and we are submitting it to the GFOA to determine its eligibility for another certificate.

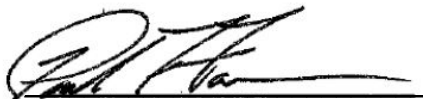
In addition, the County also received the GFOA's Award for Distinguished Budget Presentation for thirty-four of the past thirty-five fiscal years beginning 1987 through 2021 (the 1996 Budget was not submitted). In order to qualify for the Distinguished Budget Presentation Award, the County's budget document was judged to be proficient in several categories including policy documentation, financial planning, organization and communication.

Acknowledgements

The preparation of this report on a timely basis could not be accomplished without the efficient and dedicated services of the Department of Administration's Accounting staff. We would like to express our appreciation to all members of our staff, including Accounting Services Manager, Danielle Igielski; Principal Financial Projects Analyst, Robert Ries; Senior Financial Analyst, Kayla Kaboskey; Senior Financial Analyst, Marisa McRae; and Senior Fiscal Specialist, Holly Zick, who assisted and contributed to the preparation of this report.

Appreciation is also expressed for the excellent assistance received from our independent auditors, Baker Tilly US LLP. We would also like to thank the County Board and Finance Committee Chairpersons, the County Board of Supervisors, and the Finance Committee for their interest and support in planning and conducting financial operations of the County in a responsible and forward thinking manner.

Respectfully submitted,



Paul F. Farrow
County Executive



Andrew V. Thelke
Director of Administration



Government Finance Officers Association

Certificate of
Achievement
for Excellence
in Financial
Reporting

Presented to

**Waukesha County
Wisconsin**

For its Comprehensive Annual
Financial Report
For the Fiscal Year Ended

December 31, 2019

Christopher P. Morill

Executive Director/CEO

THIS PAGE LEFT BLANK

WAUKESHA COUNTY
 Department Heads
 as of December 31, 2020

Administration	Andrew V. Thelke
* Chief Judge	Jennifer R. Dorow
* Clerk of Courts	Monica Paz
Corporation Counsel	Erik G. Weidig
* County Board Chairperson	Paul L. Decker
* County Clerk	Margaret T. Wartman
* County Executive	Paul Farrow
* District Attorney	Susan L. Opper
Emergency Preparedness	Gary Bell
Federated Library	Karol Kennedy
Health & Human Services	Antwayne Robertson
Medical Examiner	Lynda M. Biedrzycki
Parks & Land Use	Dale R. Shaver
Public Works	Allison M. Bussler
* Register of Deeds	James R. Behrend
* Sheriff	Eric J. Severson
* Treasurer	Pamela F. Reeves
University of Wisconsin-Extension	Jerry Braatz
* Elected Position	

**OFFICIALS OF WAUKESHA COUNTY
COUNTY BOARD OF SUPERVISORS
BOARD YEAR #175 (2020)
(Term Expires April, 2022)**

Chairperson Paul L. Decker
First Vice Chairperson James A. Heinrich
Second Vice Chairperson David W. Swan

EXECUTIVE COMMITTEE

Paul L. Decker, Chairperson	David W. Swan
James A. Heinrich	Peter M. Wolff
Timothy Dondlinger	David D. Zimmermann
William A. Mitchell	

FINANCE COMMITTEE

James A. Heinrich, Chairperson	Larry Nelson
Tyler J. Foti	Duane E. Paulson
Joel R. Gaughan	Ted Wysocki
Thomas A. Michalski	

HEALTH AND HUMAN SERVICES COMMITTEE

Timothy Dondlinger, Chairperson	Jeremy Walz
Jim Batzko	Steve Whittow
Kathleen M. Cummings	Ted Wysocki
Joel R. Gaughan	

HUMAN RESOURCES COMMITTEE

David D. Zimmermann, Chairperson	Richard Morris
Michael A. Crowley	Duane E. Paulson
Kathleen M. Cummings	Jeremy Walz
Jacob LaFontain	

JUDICIARY AND LAW ENFORCEMENT COMMITTEE

Peter M. Wolff, Chairperson
Michael A. Crowley
Tyler J. Foti
Christine M. Howard

Darlene M. Johnson
Jacob LaFontain
Larry Nelson

LAND USE, PARKS, AND ENVIRONMENT COMMITTEE

William A. Mitchell, Chairperson
Keith Hammit
Thomas A. Michalski
Chris Mommaerts

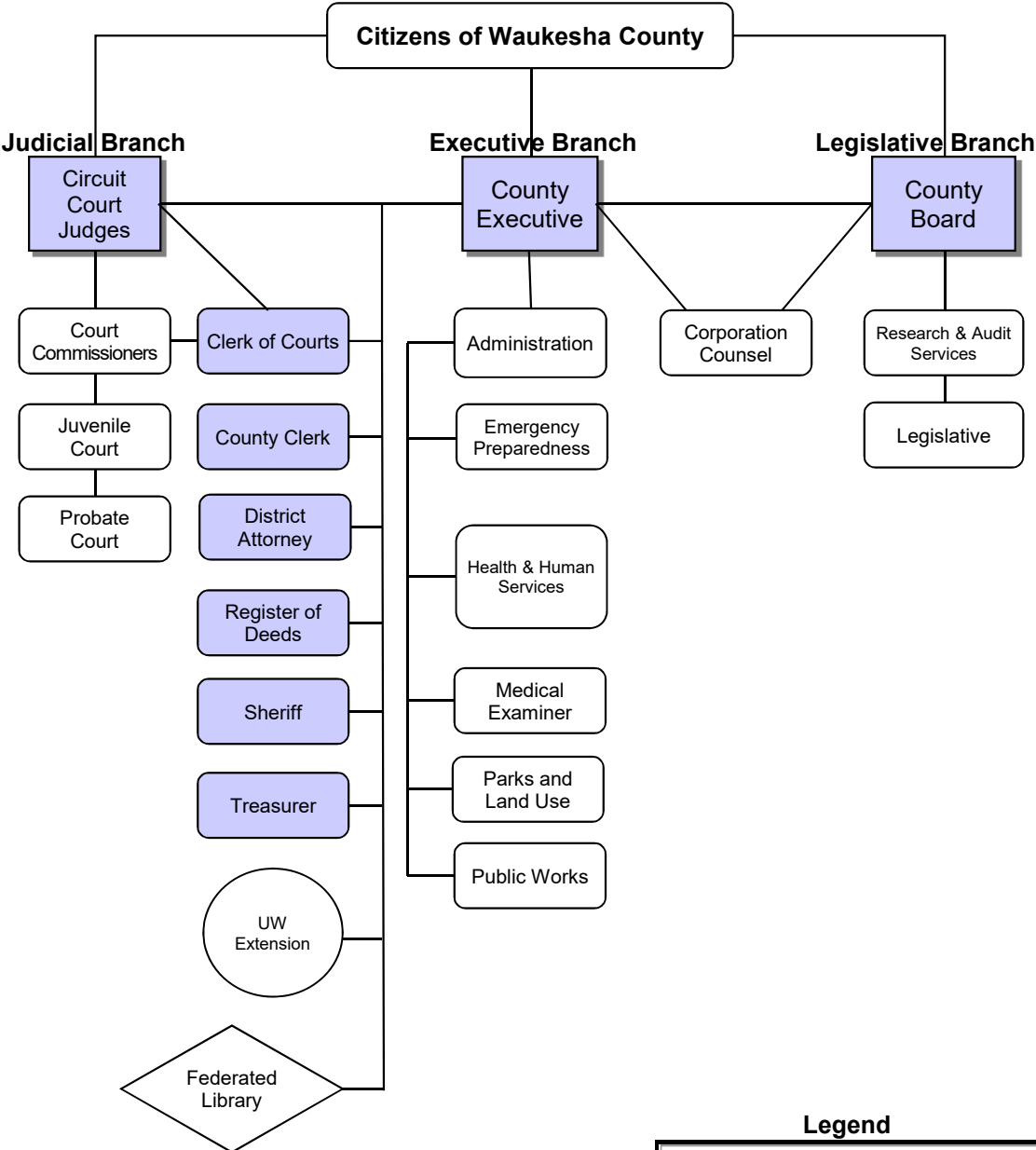
Richard Morris
Thomas J. Schellinger
Steve Whittow

PUBLIC WORKS COMMITTEE

David W. Swan, Chairperson
Jim Batzko
Keith Hammitt
Christine M. Howard

Darlene M. Johnson
Chris Mommaerts
Thomas J. Schellinger

Waukesha County Organizational Chart



Legend

	Elected Officials
	County and State Shared Governance
	Board or Commission Governance