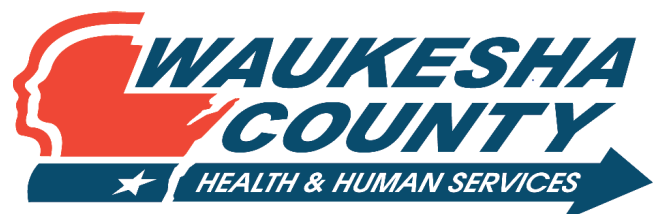




Public Health
Prevent. Promote. Protect.

Waukesha County Public Health

Waukesha County Public Health Annual Report 2022



Waukesha County Public Health is a Division of
Waukesha County Health & Human
Services Department

Contents

Cover Picture:
Farmland on Bryn Drive in
Waukesha County, Wisconsin, 2022.

Picture below:
Public health staff walking back from a
tour of the Waukesha County Sheriff's
Department. Just one of the many visits
staff took to strengthen relationships
with other departments and divisions
within Waukesha County, in 2022.

- 1 Letter from the Public Health Manager & Health Officer
- 2 Foundations of Public Health
- 3 Organization Chart, HHS Board & Public Health Advisory Committee
- 4-5 Communicable Disease
- 6 Family & Community Health
- 7 Environmental Health
- 8-9 Women, Infant & Children (WIC)
- 10-11 Preparedness & Strategy
- 12-13 Public Health Budget & Revenues
- 14-15 The Committees We Serve
- 16 Community Health Improvement Plan (CHIP)
- 17 Fentanyl - A Community Health Crisis



A Letter From the Health Officer



Ben Jones, 2023

Benjamin Jones Public Health Manager, Health Officer

The mission of the Waukesha County Public Health Division is to champion innovative programs and partnerships to foster optimal health and well-being for our community.

I am pleased to present the 2022 Annual Report for the Waukesha County Public Health Division, which tells the story of how Public Health is adapting and innovating in a post-pandemic world. The landscape of public health has changed significantly over the last few years, and it is critical that we modernize our approach to meeting the changing health needs of the community, as well as to position ourselves for the future. The Public Health Division has embraced the role of chief health strategist, often called Public Health 3.0, which will allow us to team with key partners throughout our community to work collaboratively on improving health. Together, we can respond to the health issues in our community quicker and more efficiently. We have put an emphasis on using and communicating data so that our community can make informed health decisions. This Public Health 3.0 approach will not only better position the county to respond to future emergencies, but also continue to recover from COVID-19.

The Public Health Division underwent significant transformation in 2022 with the infusion of new roles and position types, such as Strategy Supervisor, Epidemiologist, Communications Coordinator, and Disease Intervention Specialists. We know we have to evolve, and the skills and expertise added by incorporating these positions ensures ongoing success and displays our commitment to the future.

Public Health also launched a new Community Health Improvement Plan (CHIP) cycle and identified the leading health priorities facing Waukesha County as Healthy Aging, Substance Use, and Mental Health. This was the beginning of a 5-year journey to engage community partners to effect systems level change through the implementation of community health action plans. Addressing these three priority areas will have significant positive impacts to improve the health of those that live, work and play in Waukesha County.

Waukesha County Public Health is fortunate to be part of a public health system of highly engaged and committed partners including our own Department of Health and Human Services, as well as healthcare systems, first responders, education institutions, businesses and community organizations. We look forward to continuing to foster and grow these partnerships with the everlasting goal to advance the health of Waukesha County.

Sincerely,

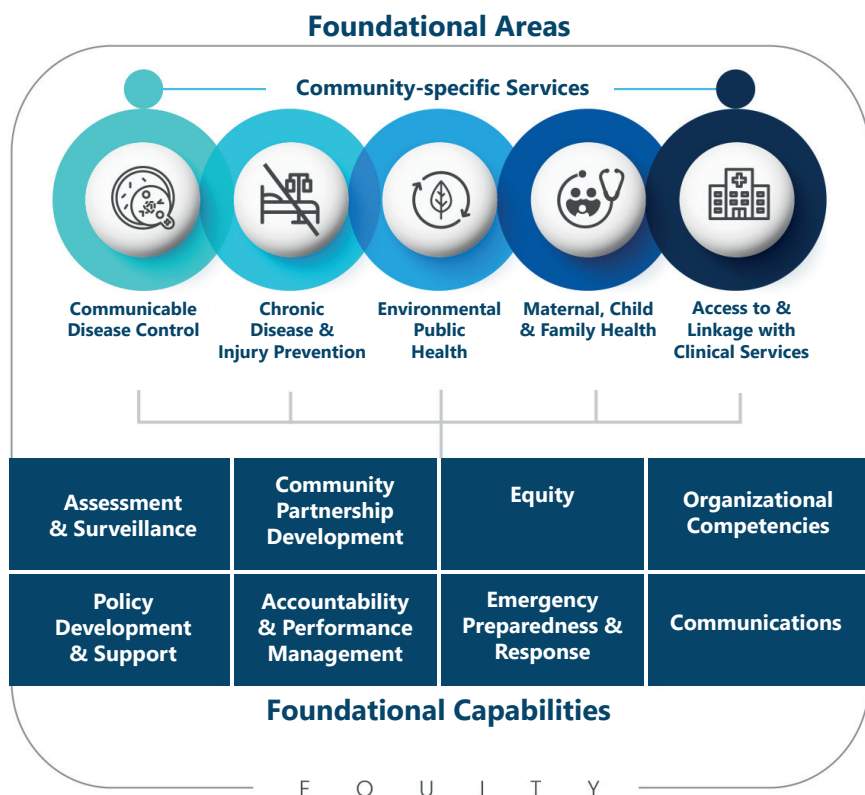
A handwritten signature in black ink, appearing to read 'BJ', written over a light blue horizontal line.

Benjamin Jones
Public Health Manager & Health Officer
Waukesha County Public Health

What is Public Health?

Public Health is "the science and art of preventing disease, prolonging life, and promoting health through the organized efforts and informed choices of society, organizations, public and private communities, and individuals." - CEA Winslow

In practice, the definition of Public Health is flexible, adaptable, and can include many things. All roads lead back to health and so all programs in the Department of Health and Human Services and in the County have a role in protecting and improving the public's health. Waukesha County Public Health uses the foundational services as a framework.



Foundational Public Health Services

The Foundational Public Health Services framework outlines the unique responsibilities of governmental public health and defines a minimum set of foundational capabilities and foundational areas that must be available in every community.

By adopting this framework, Waukesha County ensures that it can effectively respond to public health emergencies, monitor and address health disparities, and deliver essential public health services to its residents.

2022 Health & Human Services Board Mission & Members

Elizabeth Aldred
HHS Director



Lisa Roberts
HHS Deputy Director



HHS Board Mission:

In partnership with our community, we provide, purchase, and coordinate a wide range of high-quality prevention, intervention and protective services. We are committed to making the best use of resources available to promote health, self-sufficiency and an improved quality of life. We honor the dignity of individuals and families in all of our work.

Health & Human Services Board

- Larry Nelson** Board Chair / Co. Brd. Supervisor
- Mary Baer**, Citizen Member
- Christine Beck**, Citizen Member
- Mary Berg**, Citizen Member
- Vicki Dallmann-Papke**, RN, Citizen Member
- Joel Gaughan**, County Board Supervisor
- Mike Goldstone**, MD, Citizen Member
- Christine Howard**, County Board Supervisor
- Robert Menefee Jr.**, Citizen Member

Organizational Chart

Benjamin Jones
Public Health Manager, Health Officer
Length of Service: 15 Years



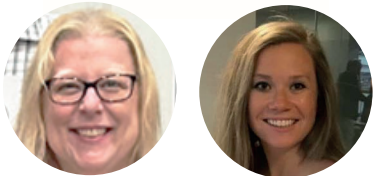
Sarah Ward
Environmental Health Manager
Length of Service: 22 Years



Elizabeth Laatsch
Public Health Coordinator
Length of Service: 21 Years



Community Health



Theresa Imp & Gabby Manders

Program Areas

Category 1 & 2 Diseases
Outbreaks and Complaint Investigations
Tuberculosis
Immunizations & Travel
Maternal Child Health
Lead Program
Screening Clinic
HIV Partner Services

Team Composition (14.23 FTE)

1 Clinical Supervisor
1 Public Health Supervisor
9 Public Health Nurses
3 Disease Intervention Specialists
3 LTE PHN's

Strategy



Frances Thomas

Program Areas

Data Analytics
Performance Mgmt
Community Health Education
Marketing & Communication
CHIP
Opioid Prevention

Team Composition (5.5 FTE)

1 Supervisor
1 Epidemiologist
2 Health Educators
1 Communication Coordinator
1 Social Worker

WIC



MaryJo Hamman

Program Areas

Nutrition Education & Services
Breastfeeding Programs
Farmers Market Program
Vendor Mgmt
Fit Families
Lead Testing

Team Composition (3.92 FTE)

1 Supervisor
2 Nutritionists
1 Dietetic Technician
1 LTE Nutritionist
1 LTE Dietetic Technician
2 LTE Public Health Techs

Preparedness



Bridget Gnad

Program Areas

Public Health Preparedness
Building Safety & Security
HHS Business Continuity
Mass Care Preparedness
Mental Health Center
Preparedness

Team Composition (2.17 FTE)

1 Preparedness Coordinator
2 LTE Health Educators

Admin Support*



Trista Mathisen

Program Areas

Supports all program needs administratively.

Team Composition (6.6 FTE)

1 Supervisor
6 Admin Staff

**Does not directly report to Public Health Management*

2022 Public Health Advisory Committee

Voting Members

Andrew Dresang (Chair), Froedtert Health
Sarah Butz, ProHealth Care Community Benefit
Jessica Kadow, RN, ProHealth Care & Hispanic Resource Ctr
Liz Kirsch, Sixteenth Street Community Health Ctr
Betty Koepsel, RN, Citizen Member
Luann Ladwig, NP, Citizen Member
Mary Reich, RN, Lake Area Free Clinic

Non-Voting Members

Mary Baer, Health & Human Services Board Member
Mary Smith, Health & Human Services, ADRC Manager
Sarah Ward, Health & Human Services, Environmental Health Manager
Tristin Bruno, Health & Human Services, Recorder
Bridget Gnad, Health & Human Services, Preparedness Coordinator
Mary Jo Hamman, Health & Human Services, WIC Supervisor
Theresa Imp, Health & Human Services, CD Supervisor
Benjamin Jones, Health & Human Services, PH Manager, Health Officer
Elizabeth Laatsch, Health & Human Services, PH Coordinator
Gabrielle Manders, Health & Human Services, PH Supervisor
Frances Thomas, Health & Human Services, Strategy Supervisor

The COVID-19 national emergency and public health emergency (PHE) were put in place in March 2020. There were repeated extended measures, which allow millions of Americans to receive free tests, vaccines and treatments.

Communicable Disease Control provides services to individuals, families and to the population collectively. This section provides communicable disease surveillance, investigations, and interventions to control communicable diseases and outbreaks affecting individuals, families, and businesses in Waukesha County.

Communicable disease interventions include notification, education, treatment consultation and containment measures (such as work restriction, isolation, or quarantine).

Clinical services include:

- Tuberculosis (TB), with directly observed treatment
- STD Screenings
- Immunization Services
- International Travel Clinic
- Partner Notification for STDs and HIV (conducted routinely)

Communicable Disease

| COMMUNICABLE DISEASE & PREPAREDNESS | 2019 | 2020 | 2021 | 2022 |
|--|-------|---------|-----------|---------|
| Total number of communicable disease referrals investigated* | 4,117 | 191,742 | 174,017** | 150,936 |
| - Number of communicable disease referrals investigated (non-COVID-19) | 4,117 | 2,993 | 4,212 | 3,959 |
| - Number of COVID-19 referrals | 0 | 188,749 | 169,805 | 146,977 |
| - Number of Category 1 communicable diseases investigated (non-COVID-19) | 559 | 403 | 360 | 388 |
| Total number of communicable diseases identified* | 2,224 | 38,996 | 42,492 | 61,458 |
| - Number of communicable disease identified (non-COVID-19) | 2,224 | 1,940 | 2,006 | 2,227 |
| - Number of COVID-19 cases identified | 0 | 37,056 | 40,486 | 59,231 |
| Total number of outbreaks/complaints investigated* | 120 | 1,001 | 834 | 970 |
| - Number of outbreaks investigated/complaints investigated (non-COVID-19) | 120 | 33 | 61 | 68 |
| - Number of COVID-19 outbreaks investigated | 0 | 968 | 773 | 902 |
| Number of TB Directly Observed Therapy visits | 931 | 920 | 1,002 | 669 |
| Number of TB skin tests | 567 | 106 | 110 | 83 |
| Number of vaccines administered* | 2,824 | 911 | 38,970 | 1,519 |
| - Children Immunized* | 478 | 151 | 732 | 212 |
| - Adults Immunized* | 1,047 | 335 | 20,617 | 564 |
| Number of International Travel Clients | 223 | 91 | 111 | 235 |
| Number of clients screened in STD clinic | 315 | 76 | 0 | 96 |
| Number of preparedness trainings conducted | 16 | 165 | 74 | 35 |
| *Includes COVID-19 | | | | |
| **Data may vary for the total number of communicable disease investigated in 2021 from previous report due to data clean up process in Wisconsin Electronic Disease Surveillance System. | | | | |

Division Advancements in relation to Communicable Diseases

- Restructuring of the division to streamline efforts and better position for the future.
- Infusion of new roles and position types, such as Disease Intervention Specialists, to more fully utilize skills and expertise of staff.
- Greatly reduced COVID response by ceasing case investigation and follow-up, focusing on required disease management activities and recovery. The Waukesha County Public Health Covid Response team went from over 200 in 2020, to approximately 30 people at the start of 2022, and went down to 5 by the end of the year.

Family & Community Health

| FAMILY & COMMUNITY STATISTICS | 2019 | 2020 | 2021 | 2022 |
|--|-------|------|------|------|
| Number of children tested in the Division for lead poisoning | 1,005 | 167 | 33 | 59 |
| Number of lead-poisoned children case managed | 91 | 52 | 73 | 106 |
| Number of children-at-risk (medical/physical neglect) case managed | 169 | 65 | 62 | 14 |
| Number of Women case managed | 91 | 23 | 10 | 15 |
| Number of chronic disease screenings | 417 | 123 | 0 | 29 |
| Community education events | 139 | 17 | 46 | 13 |

Providing Services

**The reality post-COVID:
Partnerships are key to the future of Public Health.**

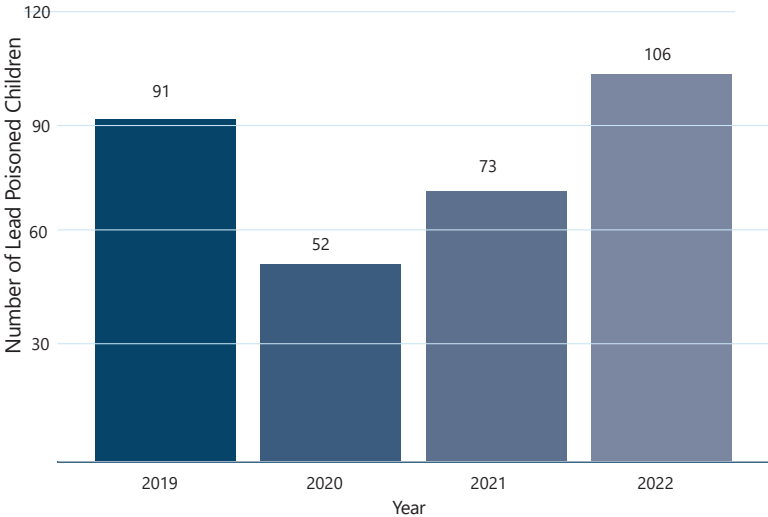
The Family and Community Health Section provides services directly to individuals, families and to the population collectively. This section provides various services and education to individuals from early childhood to late in life through clinic visits, home visits or community events. Child preventive health services can include lead poisoning screenings, child health checks, fluoride varnishing, and child neglect and abuse assessments.

Adult health services consist of screenings and case management in areas such as cholesterol, glucose, blood pressure, pregnancy testing, as well as prenatal and postpartum monitoring.

Additionally, there is participation on numerous community coalitions to address health equity and health disparities.

Although we are serving less people in some areas, we are focusing on strengthening partnerships across the board to point people to the right resources in our community. As we transition to public health 3.0, the number of people we serve may go down, yet we're working collaboratively with community partners, to make sure efforts are not duplicated.

**Number of Lead Poisoned Children, Case Managed
Family & Community Health 2022**



Environmental Health

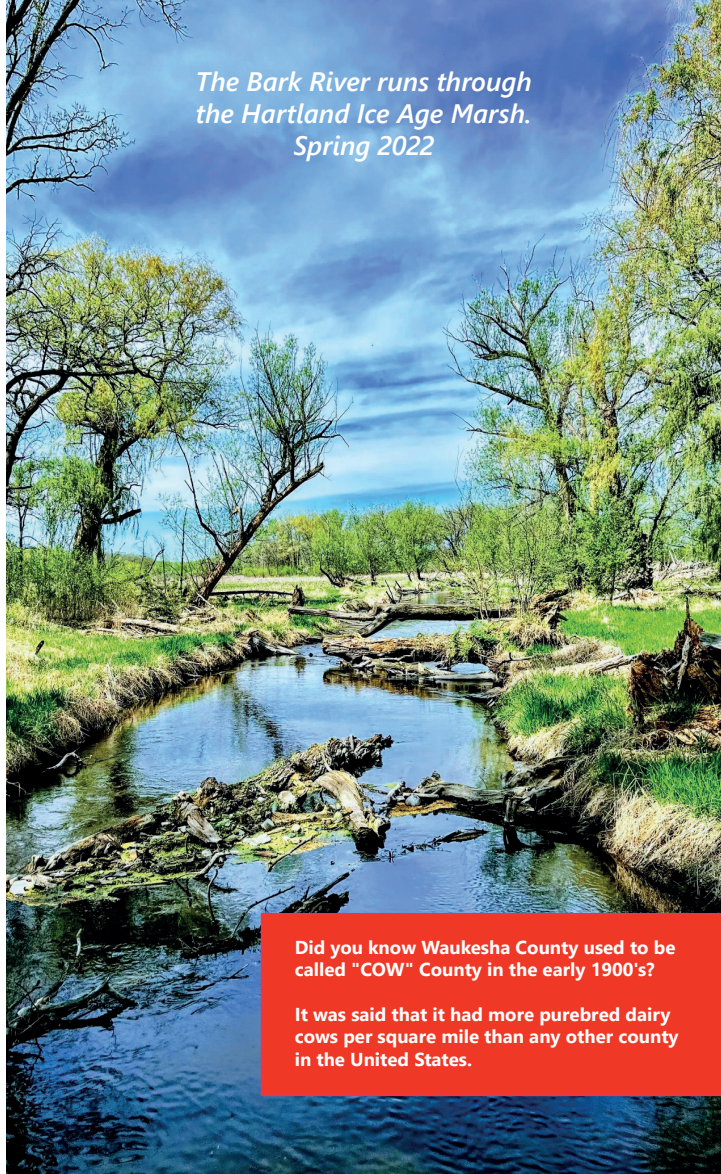
<https://www.waukeshacounty.gov/landandparks/environmental-health/>

The Environmental Health Division is located in Parks and Land Use in Waukesha County. Public Health has Memorandum of Understanding with Environmental Health to fulfill statutory Public Health requirements.

Program Highlights from 2022:

- The Licensing Program issued 2142 licenses and conducted 2,699 inspections at food and recreational facilities.
- The Humane Animal program provided rabies follow-up for 675 reports of bite incidents. A total of 111 bats were tested, of which 2 were inconclusive.
- Guidance was provided for 66 nuisance/hazard complaints:
1 – Air Quality, 10 – Bed Bugs, 33 – Mold and 22 classified as Other.
- As a Radon Information Center (RIC) 311 contacts were made via phone, email, or in person, 1132 radon kits were sold to local health departments, and 526 radon kits were sold to the public.

The Bark River runs through the Hartland Ice Age Marsh. Spring 2022



Did you know Waukesha County used to be called "COW" County in the early 1900's?

It was said that it had more purebred dairy cows per square mile than any other county in the United States.



In 2022, 6 Public Health Employees received 5-Year Benchmark awards for more than a total of 10 years of service in Public Health.

Pictured left to right:

Paul Farrow, County Executive

Cindy Tomazevic
Public Health Nurse - 25 Years

Elizabeth Laatsch
Public Health Coordinator - 20 Years

Ben Jones
Public Health Manager, Health Officer - 15 Years

Theresa Imp
Public Health Supervisor - 20 Years

MaryJo Hamman
WIC Program Supervisor - 10 Years

Lisa Topp
Registered Dietetic Technician - 10 Years



Pictured here (with consent):
Attendees of the "Garden Container" event, held at the Health and Human Services back patio, in May of 2022.

The focus was learning how to plant and grow vegetables. Each family in attendance was given a tomato and a pepper plant, a bag of dirt, watering can, gardening gloves, a container, a children's book about gardening, and a rock to label in their own creative way.

The WIC Nutrition Program

\$2,505,106 in revenue was generated among Waukesha County grocers from WIC purchases.

Throughout 2022 the WIC program continued to offer virtual services with the extension to the public health emergency declaration at the federal level. The program was well-positioned for virtual services due to its ability to electronically provide benefits to participants and with the extension to the physical presence waiver.

2022 Regional Nutrition Consultant Review:

WIC staff showed great communication with each other and the families they serve. Staff members had exemplary customer service skills and incorporated "Be Person Centered" (BePC) principles, along with motivational interviewing skills. The Nutritionists used VENA (Value Enhanced Nutrition Assessment) skills.

Staff, in a general sense, were complimented for exceeding requirements and providing meaningful services to families and assisting families with meeting their complex needs.



Message to WIC Staff from a Client (sent with picture to the left, August 2022):

Our home garden has taken off! Back in May, we had transplanted the tomato and pepper plants from the WIC / Fit Families Garden event. The tomato plant is HUGE! Bigger than I've ever seen! The kids are very excited! We are also growing cilantro, sweet peppers, cucumbers, zucchini, onions, and popcorn!

The kids are eating a lot more veggies! I got them to try cilantro right off the plant! My son sometimes will eat a raw carrot and my daughter likes asparagus now.

Women, Infants & Children (WIC)

| WIC PROGRAM | 2019 | 2020 | 2021 | 2022 |
|--|-------------|-------------|-------------|-------------|
| WIC Program Clients | 2,698 | 2,503 | 2,464 | 2,375 |
| - Number of appointments completed | 3,171 | 3,952 | 2,134 | 2,235 |
| - Number of high-risk follow-up visits completed | 1,306 | 1,247 | 2,136 | 1,944 |
| Breastfeeding Initiation Rates | 73.4% | 77.4% | 72.1% | 80.0% |
| WIC Grocer Revenue | \$1,828,223 | \$2,009,883 | \$2,084,836 | \$2,505,106 |
| Farmers Market Revenue | \$11,585 | \$8,820 | \$11,448 | \$10,188 |
| Homeless Participants Served | 24 | 19 | 22 | 26 |

Participants

WIC (Special Supplemental Nutrition Program for Women, Infants, and Children) is our nation's premier public health nutrition program. Wisconsin WIC serves more than 90,000 women, infants, and children each year. More than half of Wisconsin infants qualify for the WIC program.

The WIC program helps families get the essential nutrients they need during critical times of growth and development. The Waukesha County WIC staff works in collaboration with health care providers. The goal is to ensure Waukesha's more vulnerable families get a healthy start and find lifelong wellness.

WIC served 2,375 Waukesha County participants in 2022. In addition to the 2,000 certification appointments completed, additional contacts were made for high risk and individual follow-ups by both nutrition staff and breastfeeding peer counselors resulting in a total of 5,354 educational contacts received by WIC families.

Of the 1,396 families WIC assisted in 2022, 26 individuals reported being homeless and 47% reported incomes at or below the federal poverty level.

Of the women enrolled in Waukesha County WIC during their pregnancy, 80% initiated breastfeeding in comparison to the WIC State breastfeeding initiation rate of 70%.

2022 Facts (4th Quarter):

Years of Education (Women)

| | |
|------------|-------|
| 0-7 years | 0.81% |
| 8-11 years | 12.1% |
| 12 years | 51.8% |
| 13+ years | 32.2% |
| Unknown | 3.76% |

Approximately 83% of Waukesha County WIC Clients have a high school education or higher.

Race and Ethnicity

| | |
|--------------|-----|
| Non-Hispanic | 68% |
| Hispanic | 32% |

Other Program Participation

| | |
|---------------------------|-----|
| Medicaid/BadgerCare Plus | 87% |
| At Poverty or zero income | 47% |

Emergency Preparedness



Sheltering

Provides temporary essential services such as feeding, safe and secure housing, basic medical/behavioral health services, supply distribution and resource and referral information when an emergency displaces people from their home.



Mass Clinics

Open in response to a public health emergency to help distribute preventative medication or vaccine to maintain the health of the community.



Reunification Centers

Facilitate information sharing to support family notification and reunification during and after a mass casualty event. Connects victims and those present during the incident with their loved ones.



Family Assistance Centers

Address the psychological, spiritual, medical and logistical needs of grieving family members after an event and provide them with accurate and timely updates.

Number of Preparedness Trainings & Exercises in 2022

35

Public health preparedness is a rapidly evolving component of the public health division that addresses preparedness strategies for quick response to a range of public health threats, both intentional and unintentional, including biological, chemical, or natural disasters.

Public Health Strategy

The newly created Strategy Team drives Public Health 3.0 forward in Waukesha County

The Strategy Team serves as a catalyst for the implementation of Public Health 3.0 through the expanded use of health data, a focus on community partnerships, and an increased focus on health equity.

In its inaugural year, the Strategy Team used data to enhance performance management, amplify internal and external communication, and connect the community to health education. Additionally, the Strategy Team played an important role in the 2022 Waukesha County Community Health Assessment. In partnership with the Community Health Improvement Plan (CHIP) Steering Committee, the Strategy Team helped collect, analyze, and translate the data into a story of health in Waukesha County.

What is Public Health 3.0?

Public Health 3.0 is a modern version of public health that emphasizes collaborative engagement and cross-sector actions to address health inequity by targeting the social determinants of health. It focuses on environmental, policy, and systems-level changes to create sustainable improvements in community health outcomes.

Background Picture

Public Health 3.0 in action - this picture shows the Public Health staff touring the Waukesha Police Station. The Waukesha Police partnered with Public Health in 2022 on the Community Health Improvement Plan, Heroin Task Force, and the Fentanyl Crisis.



Education

Health education was revitalized in 2022.

Following a challenging two years, the health education program began to rebuild in 2022. The health education program offers a variety of presentations including emergency preparedness, disease prevention, healthy lifestyle habits, and managing chronic conditions.



Epidemiology

A full-time epidemiologist joined the public health team in 2022.

The epidemiologist is responsible for monitoring and assessing the health of the community by collecting and analyzing public health data.



Communications

A full-time communications staff member joined the public health team in 2022.

The communications specialist improves internal and external communications through Public Health campaigns, social media, and even this annual report!

Public Health Budget

Budget is \$3.5 million (note: \$500,000 is temporary COVID funding)



Actual

The number reported after full reconciliation of the budget, from the previous year.



Budget

The budget number represents the planned allocated funds for each of the line items listed below.



Estimate

The divisions best estimation of what the ACTUAL will be before reconciliation.

| PUBLIC HEALTH BUDGET | 2021 ACTUAL | 2022 BUDGET | 2022 ESTIMATE | 2023 BUDGET |
|-------------------------------|---------------------|--------------------|--------------------|--------------------|
| Staffing (FTE) | 46.47* | 30.14 | 30.14 | 29.26 |
| General Government | \$6,714,088 | \$1,315,188 | \$1,098,140 | \$1,360,042 |
| Fine/Licenses | \$0 | \$0 | \$0 | \$0 |
| Charges for Services | \$78,568 | \$214,380 | \$173,515 | \$197,980 |
| Interdepartmental Revenue | \$0 | \$0 | \$0 | \$0 |
| Other Revenue | (\$6,219) | \$0 | \$0 | \$0 |
| Appr. Fund Balance | \$500,000 | \$0 | \$0 | \$0 |
| County Tax Levy (Credit) | \$1,975,034 | \$1,847,143 | \$1,847,143 | \$1,938,260 |
| TOTAL REVENUES | \$9,261,471 | \$3,376,711 | \$3,118,798 | \$3,496,282 |
| Personnel Costs | \$5,930,623 | \$2,926,896 | \$2,488,128 | \$2,926,630 |
| Operating Expenses | \$1,770,854 | \$289,890 | \$348,060 | \$363,526 |
| Interdepartmental Charges | \$391,627 | \$159,925 | \$190,012 | \$206,126 |
| Fixed Assets | \$0 | \$0 | \$23,070 | \$0 |
| TOTAL EXPENDITURES | \$8,093,104 | \$3,376,711 | \$3,049,270 | \$3,496,282 |
| REVENUE OVER / (UNDER) | \$1,168,367* | \$0 | \$69,528 | \$0 |

*Due to COVID grants that cut across calendar year.

Public Health Revenues

| GRANTS THAT SUPPORT OPERATIONS | 2023 |
|--------------------------------|------------------|
| Communicable Disease | \$20,000 |
| Immunization | \$57,000 |
| Maternal/Child Health | \$69,000 |
| Lead | \$14,000 |
| HIV / Partner Services | \$16,000 |
| WIC | \$382,000 |
| Preparedness | \$246,000 |
| Prevention | \$19,000 |
| TOTAL | \$823,000 |

| CHARGES FOR SERVICES | 2023 |
|-----------------------|------------------|
| Immunization Services | \$141,500 |
| Tuberculosis Services | \$18,000 |
| Maternal/Child Health | \$18,000 |
| Screenings | \$13,500 |
| Lead Testing | \$7,000 |
| TOTAL | \$198,000 |

| SHORT TERM GRANTS | 2023 |
|--------------------|------------------|
| COVID Immunization | \$99,000 |
| COVID Workforce | \$158,750 |
| ARPA Funding | \$251,600 |
| TOTAL | \$509,350 |

In addition to the public health tax levy, public health brings in revenue from charges for services as well as state and federal grants.

The COVID-19 pandemic has enabled us to connect with community partners virtually, which has been a great benefit for the Public Health staff. By utilizing virtual platforms, we are able to more effectively reach out and collaborate with our partners in order to better serve our community. This has enabled us to expand our outreach, ultimately enabling us to meet our community partners and work together to improve public health.



Division & Department Committees Served by Public Health Employees

We're joiners.

The committees we serve tell the story about how we engage amongst ourselves, and with the community.

Waukesha County Public Health is contributing to our goal of achieving a Level 3 health department status. The committees we serve provide us with the opportunity to engage with one another and the wider community. In 2023, we will continue to bring our perspective and insights to the many department and division committees.

Here is a list of the internal committees, within either the Health and Human Services department or the Public Health division:

Marketing, Motivation & Morale, Organizational Effectiveness, Anti-Human Trafficking Prevention Awareness Work-group, Communications, Emergency Response, Employee Resilience, Equal Access Group, Functional Assessment Service Team (FAST), Hoarding Committee, I-Team Interdisciplinary Team, Public Health Advisory Committee, Safety Committee, Staff Action & United Way.

A PUBLIC HEALTH committee that has made substantial accomplishments in 2022, is the OE team. Check this out:



2022 OE (Operational Effectiveness) Team Accomplishments

Established framework and plan for "Weekly briefings" for the entire Public Health Staff (weekly meetings started in Jan 2023).

Started working on an onboarding program for new public health employees to have consistent information about the division.

Installed a dry-erase "question board" in the division on Public Health 3.0 and an Idea Box – Questions from the staff addressed, supported open communication.

SBART Tool - Designed to assist in presenting a concern to the organization, with framework to implement a solution.

Peer Mentoring Program Implemented

Professional Development Plan

Learning Organization Training

Staff Communication Survey

Calendar Standardization

Community Committees Served by Public Health Employees

COMMUNITY COMMITTEES

Child Fatality Review (with Med Examiner, county)

Children's Community Options Program (CCOP)

Community Health Improvement Plan (CHIP) Steering Committee

Coordinated Services Treatment (CST) VOTING MEMBER (HHS lead)

Heroin Task Force (HTF)

Hispanic Health Collaborative Network

Local Emergency Planning Committee (LEPC)

Public Health Nurse (PHN) Network Meeting

Public Health Generalist

Safe Kids Coalition, Water Safety Work Group

Shaken Baby Association

Southeastern WI Citizen Organizations Active in Disaster (SEWI COAD)

Southeastern WI Healthcare Emergency Readiness Coalition (HERC Region 7)

Substance Use Advisory Committee (SUAC | HHS Lead)

Waukesha County Breastfeeding Coalition (WCBFC)

Carroll Public Health Advisory Committee

Carroll Nursing Advisory Board

ProHealth Care Advisory Committee

Waukesha County Healthcare Preparedness Coalition (WCHPC)

Waukesha County Suicide Prevention Initiative

Community Vaccination Coalition

Menomonee Falls Collective Impact Group

Froedtert Community Outreach Steering Committee

Aurora Summit Community Steering Council



Public Health staff photo. In all fairness, especially to Dan (front left), this was ugly sweater day, 2022.

Health care is vital to all of us some of the time, but public health is vital to all of us all of the time.

– C. Everett Koop



CHIP 2022-2026

2022 Was The First Year of a 5 Year Process

Community Health Improvement Plan

To improve community health, Waukesha County utilizes the MAPP (Mobilizing for Action through Planning and Partnerships) process, a year long partner driven process. Here is the timeline that the Waukesha County CHIP Steering Committee followed in 2022:

Vision (February 2022)

The Steering Committee created a clear vision and a set of values that provided a framework for community health improvement in Waukesha County and a foundation for the CHIP.

The CHIP Vision: An inclusive and well-connected community supporting all people, embracing diversity, ensuring equitable access to services, and creating social, physical, and economic environments that promote health, well-being and quality of life.

Analysis (March 2022)

The Steering Committee engaged in an analysis to document the affect of societal issues, technology, economy, environment, politics, and other trends impacting the health of our community and the local public health system.

Evaluation (April 2022)

The Steering Committee evaluated the components, activities, competencies, and capacities of our local public health system.

Community Themes and Strengths Assessment (May 2022)

Assessed community themes and strengths, conducting the Quality of Life in Waukesha County Survey. 898 residents responded to the survey.

Community Health Status Assessment (June 2022)

Collected secondary data, identified key indicators and reported this information to the CHIP Steering Committee.

Initial Selection of Strategic Health Priorities (August 2022)

The Steering Committee identified the three strategic health priorities.

Gathering Input on Priorities (September - November 2022)

The Steering Committee presented data at numerous organizations and surveyed 100 community partners to gather feedback on selected Strategic Health Priorities. The CHIP Steering Committee finalized the Strategic Health Priorities in November 2022 to include **Substance Use, Mental Health, and Healthy Aging.**

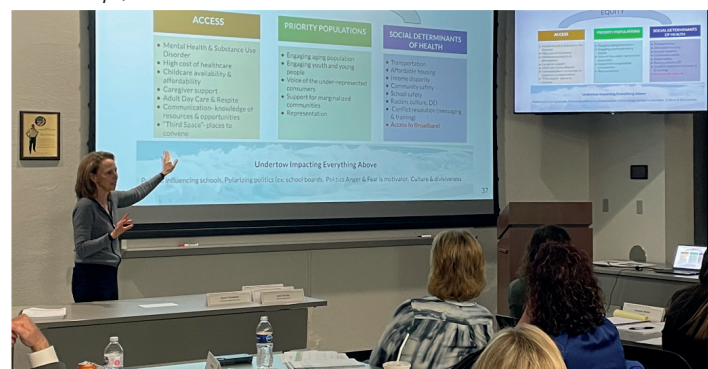
Looking forward... 2023 - 2026 Action Team Development & Implementation

In 2023, we will develop community action teams. Three Community Health Action Teams (CHATs) will be created to address the identified health concerns in the community. During the development phase, each team will be tasked with defining specific goals and objectives, identifying strategies to achieve those goals, and developing action plans to implement the strategies. The teams will be made up of community members, healthcare providers, non-profit organizations, and more to ensure a collaborative approach to addressing the health needs of the community.

Through the combined efforts of the action teams and the community, it is hoped that a healthier and more equitable community will be created for all its residents.

To keep up with CHIP progress, you can visit:
<https://www.waukeshacounty.gov/chipp/>

Terri Phillips, CHIP Process Facilitator





A graphic from the Waukesha County Fentanyl Crisis "One Pill Can Kill" Campaign, 2022.

Leading the Way In Public Health 3.0 Fentanyl - A Community Health Crisis

A Public Health Crisis Declared on August 1st, 2022
by Paul Farrow, Waukesha County Executive

"The fentanyl crisis is not simply an illicit opioid problem to be solved," said Waukesha County Health & Human Services Director Elizabeth Aldred. "It's a towering dilemma that requires a swell of support and engagement to intentionally reduce fentanyl-related deaths and poisonings in Waukesha County."



A poster that was put at bus stops in Waukesha County that was made in partnership with Saving Others for Archie and the Love, Logan Foundation.

Fighting Fentanyl

Since May 2017, Waukesha County has been committed to strategies to reduce the number of opioid overdose deaths in the county.

Provisional data, according to the Wisconsin Department of Health Services, shows the number of fentanyl overdose deaths in Wisconsin grew by 97% from 2019 to 2021. Synthetic opioids, primarily fentanyl, were identified in 91% of opioid overdose deaths and 73% of all drug overdose deaths. Cocaine deaths involving synthetic opioids have increased by 134% from 2019 to 2021, and it is estimated that as many as 40% of counterfeit pills contain enough fentanyl to be lethal.

Waukesha County specifically saw an increase in fentanyl usage in 2019. In 2020, the county experienced its worst year ever with 95 drug-related deaths, and in 2021 there were 92 drug overdoses, according to Farrow during his declaration of a community health crisis.

The fight against fentanyl continues. Waukesha County will continue raising awareness in partnership with many organizations contributing to educating the public about the deadly opioid.

THEY DIDN'T KNOW...
FENTANYL
AMERICA'S NEW "F" WORD



Fentanyl is the #1 cause of death in the U.S. among ages 18-45!



#OnePillCanKill #JustKNOW





Public Health

Prevent. Promote. Protect.

Waukesha County Public Health

514 Riverview Ave. Waukesha, WI 53188 | 262-896-8430

Social Media Resources:

@WaukeshaCountyPublicHealth



@WaukeshaCoHHS



@WaukeshaCoHHS



@Waukesha County Health & Human Services



Scan this QR code with the camera on your phone to find all Waukesha County Social media page links.



www.WaukeshaCounty.Gov/PublicHealth