

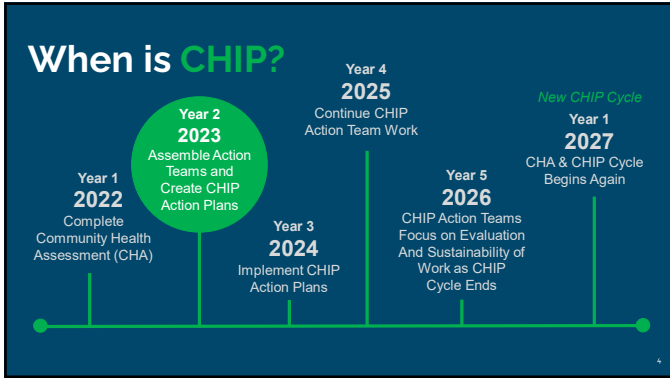
1



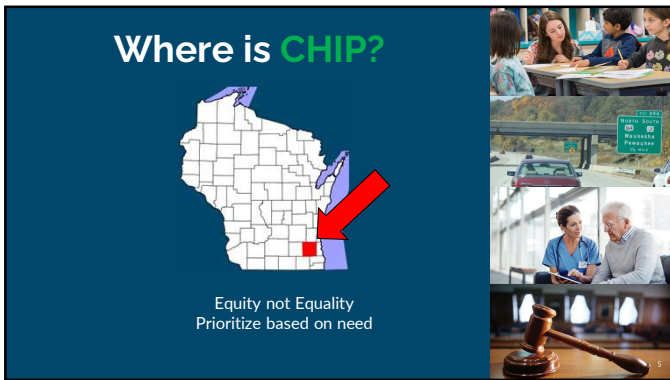
2



3



4



5



6

Why is CHIP?

An inclusive and well-connected community supporting all people, embracing diversity, ensuring equitable access to services, and creating social, physical, and economic environments that promote health, well-being, and quality of life.



Waukesha County
Community Health Assessment
2022




7

Strategic Health Priorities

- CHAT MENTAL HEALTH Mental Health
- CHAT SUBSTANCE USE Substance Use
- CHAT HEALTHY AGING Healthy Aging

8

Barriers to Health in Waukesha County

Social Needs

- Healthy Social Interactions
- Social Connectedness
- Communication & Information
- Accessibility vs Availability
- Workforce Challenges





Basic Needs

- Reliable County-wide Transportation
- Economic Stability
- Affordable Housing
- Food Security
- Affordable Childcare

9

So, what do we do...? Frances' Foundational Four

Collective Impact

DATA 	COMMUNITY 	EQUITY 	HEALTH 
Advocate for, collect, and use data to drive decision making	Intentionally connect with partners. Include the community in strategies that involve THEM	Focus on system level changes that remove barriers to health	Building thriving communities with holistic well-being

10

Mental Health Action Team


- 20 members
- 3 Tri-Chairs
- Teams meets 1x per month

Organizations: School District of Waukesha, NAMI, Children's Hospital of Wisconsin, Froedtert, YMCA

11

Mental Health

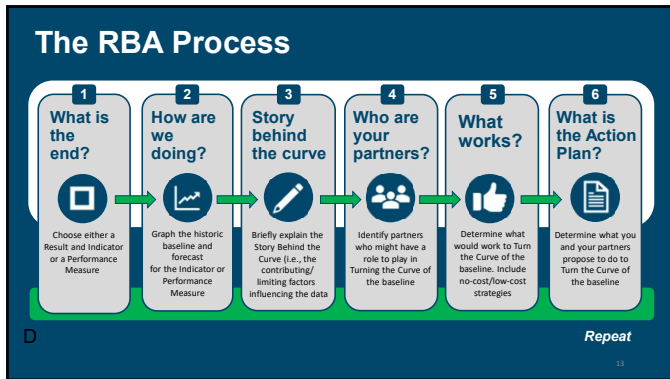
56% of Waukesha County High School students said they experienced anxiety, depression, or intentionally self-harmed themselves in the last 12 months.



"Trying to get my child into mental health professional is nearly impossible. It took months to get in and we had almost no options. I ended up doing telehealth with a provider out of Wausau, so that she could see someone within a few weeks rather than months. It's terrible." - Quality of Life Survey Respondent

12

12

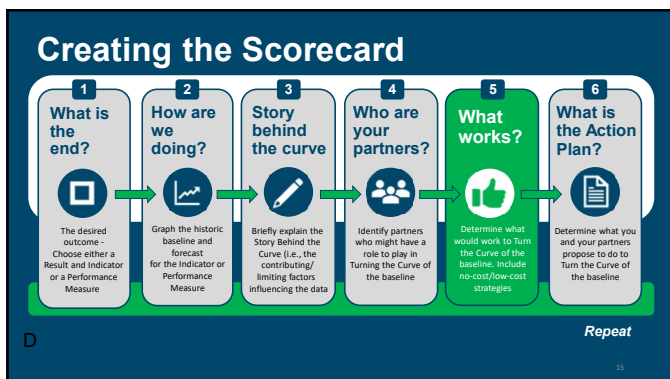


13

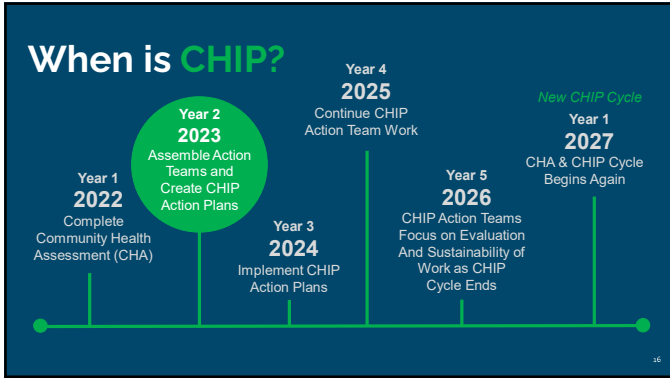
All adolescents between the ages of 12-18 in Waukesha County will have access to quality mental health services

- % of students who self-report depression in Waukesha County
- # of youth mental or behavioral health visits
- % of visits by anxiety and depression

14



15



16

What can YOU do to support CHIP?

- Do school districts have a youth group that we could talk with to get feedback?
 - Youth feedback
- What are the major youth serving organizations in Waukesha County
- Join the implementation team in 2024
- Use the CHIP toolkit
- Attend CHIP kickoff in February 2024
- External DATA
- Apply for grant funding that supports CHIP Action Plan (non-County organizations only)

17

ARPA Funding

Funding will be used to directly impact indicators and attempt to achieve the pre-determined result!

\$300,000		
Mental Health	Substance Use	Healthy Aging
Details to come!		

18

ARPA Funded CHIP

- System level change preferred
 - Mental health: Additional evidence-based practices trainings
 - Substance use: Lower the "qualifications" to higher levels of care
 - Healthy Aging: Project that puts curb-cuts throughout an entire area
- Must be an external agency (cannot be a Department of Waukesha County HHS)
- Complete required application with attachments
- Must serve Waukesha County Residents

19

19

Timeline

Jan. 2024 External Information Session

Feb. 2024 Applications Submitted

Mar. 2024 Applications Scored

Mar. 2024 Announce Awards

May 2024 Finalize Contracts
Public Celebration Event

20

20

Let's Connect!

Frances: fthomas@waukeshacounty.gov

Dhruvi: dshah@waukeshacounty.gov

The First Law of Ecology: "Everything Is Connected to Everything Else"
-Barry Commoner

21

21

Learn more about Waukesha County Public Health on our website!



Social Media Resources

@WaukeshaCountyPublicHealth 

Waukesha County Health & Human Services 


@WaukeshaCoHHS 

Waukesha County Health & Human Services 

waukeshacounty.gov/chip

22

Questions?



23
