

176th BOARD YEAR

LEGISLATIVE ITEMS RECEIVED FOR COMMITTEE REFERRAL

| File No. | Rec/Ref: | To: | Title |
|-----------|----------------------|----------------|---|
| 176-O-120 | 03/01/22 03/03/22 | PW | ORD: Laying Out, Relocation And Improvement Of County Trunk Highway Q At The Intersection Of Hillside Road. Project I.D. 2709-07-70 |
| 176-O-121 | 02/25/22 03/03/22 | PW | ORD: Create A Parking Regulation For CTH P In The Village Of Summit |
| 176-O-122 | 02/22/22 03/03/22 | PW | ORD: Create A Parking Regulation For CTH N In The Town Of Eagle |
| 176-A-028 | 03/03/22 03/03/22 | EX | APPT: Todd Hillmer to the Delafield Public Library Board |
| 176-A-029 | 03/03/22 03/03/22 | EX | APPT: Kelsey Butterfield to the Delafield Public Library Board |
| 176-A-030 | 03/03/22 03/03/22 | EX | APPT: Nicole Krickhahn to the Delafield Public Library Board |
| 176-O-123 | 03/02/22 03/03/22 | JU FI | ORD: Authorize The Waukesha County Sheriff's Department To Amend The 2019-2023 Police Patrol Services Contract With The Village Of Sussex, Create An Additional 2.00 FTE Deputy Sheriff Positions For The Contract Beginning July 1, 2022, And Amend The 2022 Sheriff's Department Budget Accordingly |
| 176-O-124 | 03/02/22 03/03/22 | HS FI | ORD: Modify The Department Of Health And Human Services 2022 Budget To Transfer And Appropriate Additional Expenditures Funded By The American Rescue Plan Act (ARPA) Provided By Federal Centers For Disease Control And Prevention Through The Wisconsin Department Of Health Services For Continued Covid-19 Pandemic Response |
| 176-O-125 | 03/02/22 03/03/22 | HR FI | ORD: Modify The 2022 Corporation Counsel, Child Support Division Budget To Appropriate Additional Expenditure Authority Funded With Additional Revenue Allocated By The State Of Wisconsin |
| 176-O-126 | 03/02/22 03/03/22 | HR FI | ORD: Establish Salaries For Sheriff, Clerk Of Courts, And County Executive For 2023 – 2026 |
| 176-O-127 | 02/23/22 03/03/22 | CB | ORD: Approve A Limited Compromise Agreement For Worker's Compensation Case Entitled Sarah Kralovetz vs. County Of Waukesha |
| 176-O-128 | 03/21/22 03/24/22 | LU | ORD: Year 2022 Amendment To The Comprehensive Development Plan For Waukesha County (1A – Waukesha County Park And Planning Commission, Comprehensive Land Use Mapping, Town Of Lisbon |
| 176-O-129 | 03/23/22 03/24/22 | LU FI | ORD: Modify The 2022 Material Recovery Facility Fund Budget And Carryover Budget Authority From 2021 To 2022 For A Portion Of One Time Costs Associated With New Robotic Sorting Equipment And A New Eddy Current |
| 176-R-008 | 03/23/22 03/24/22 | EX FI | RES: Resolution To Adopt The Waukesha County 2022-2026 Library Services Plan, Approve New County Library Standards, And Include Electronic Materials For Circulation Purposes In The True Non-Resident Library Tax Levy Formulas |
| 176-O-130 | 03/23/22 03/24/22 | HS HR FI | ORD: Modify The Department Of Health And Human Services 2022 Budget And Create Eleven (11) Regular Full-Time Positions For Community Support Services |

YEAR 2022 AMENDMENT TO THE COMPREHENSIVE DEVELOPMENT PLAN FOR
WAUKESHA COUNTY (1A – WAUKESHA COUNTY PARK AND PLANNING
COMMISSION, COMPREHENSIVE LAND USE MAPPING, TOWN OF LISBON)

1 WHEREAS, on February 24, 2009, the Waukesha County Board of Supervisors in Enrolled
2 Ordinance No 163-81, approved a Comprehensive Development Plan for Waukesha County;
3 and
4

5 WHEREAS, said Comprehensive Development Plan for Waukesha County provides for annual
6 update and amendment procedures; and
7

8 WHEREAS, on February 24, 2022, the Waukesha County Park and Planning Commission held a
9 Public Hearing to receive testimony on proposed changes to the Comprehensive Development
10 Plan for Waukesha County; and
11

12 WHEREAS, the staff has identified in a "Staff Report and Recommendation" dated March 17,
13 2022, a summary of the Public Hearing comments and a Staff Recommendation for the
14 proposed change to the Comprehensive Development Plan for Waukesha County; and
15

16 WHEREAS, the "Staff Report and Recommendation" has been reviewed by the Waukesha
17 County Park and Planning Commission on March 17, 2022, and a recommendation was
18 reported to the Land Use, Parks and Environment Committee and the Waukesha County Board
19 of Supervisors as required in the Comprehensive Development Plan for Waukesha County.
20

21 THE COUNTY BOARD OF SUPERVISORS OF THE COUNTY OF WAUKESHA ORDAINS that the
22 following amendment is hereby **approved** to the Year 2035 Comprehensive Development Plan
23 for Waukesha County.
24

25 1. In the Town of Lisbon, the following request is being made:
26

- 27 A. ***The Waukesha County Park and Planning Commission***, 515 West Moreland Blvd.,
28 Waukesha, WI 53188, requests comprehensive amendments to the land use plan
29 mapping for various properties within the Town of Lisbon. The proposed
30 amendments are being brought forward to generally align with comprehensive
31 amendments that the town is advancing to update the Town of Lisbon
32 Comprehensive Development Plan.
33

34 BE IT FURTHER ORDAINED that a more detailed description and map of the aforementioned
35 amendment is on file in the office of the Waukesha County Department of Parks and Land Use.
36

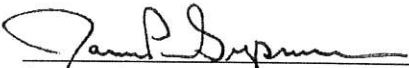
37 BE IT FURTHER ORDAINED that the Waukesha County Clerk shall file a certified copy of this
38 Ordinance with the Town Clerk of Lisbon.

COMMISSION ACTION

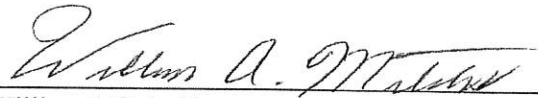
The Waukesha County Park and Planning Commission after giving consideration to the subject matter of the Ordinance entitled "Year 2022 Amendment to the Comprehensive Development Plan for Waukesha County, (1A – Waukesha County Park and Planning Commission/Comprehensive Land Use Mapping, Town of Lisbon) hereby recommends approval.


PARK AND PLANNING COMMISSION

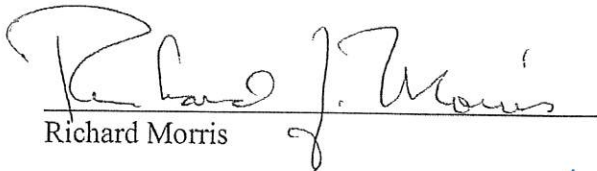
March 17, 2022

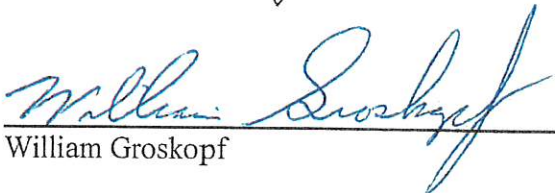

James Siepmann, Chairperson


Thomas Michalski, Vice Chairperson


William Mitchell


Robert Peregrine


Richard Morris


William Groskopf

WAUKESHA COUNTY DEPARTMENT OF PARKS AND LAND USE
STAFF REPORT AND RECOMMENDATION FOR A YEAR 2022 AMENDMENT TO THE
COMPREHENSIVE DEVELOPMENT PLAN FOR WAUKESHA COUNTY
1(A) WAUKESHA COUNTY PARK AND PLANNING COMMISSION,
TOWN OF LISBON

DATE: March 17, 2022

PUBLIC HEARING DATE:
Thursday, February 24, 2022, 1:00 p.m.

REQUEST:
1(A) In the Town of Lisbon, the following request is being made:

The Waukesha County Park and Planning Commission, 515 West Moreland Blvd., Waukesha, WI 53188, requests comprehensive amendments to the land use plan mapping for various properties within the Town of Lisbon. The proposed amendments are being brought forward to generally align with comprehensive amendments that the town is advancing to update the Town of Lisbon Comprehensive Development Plan.

EXISTING AND PROPOSED LAND USE CATEGORY:
Various- comprehensive amendments.

PUBLIC REACTION:
None.

TOWN ACTION:
On December 2, 2021, the Town of Lisbon Plan Commission approved parallel amendments to the the Town of Lisbon Land Use Plan maps, with a recommendation to the Town Board of the same.

On January 10, 2021, the Town Board approved parallel amendments to the Town of Lisbon Land Use Plan.

STAFF ANALYSIS:
The Town of Lisbon recently prepared and adopted amendments to the text and map elements of the town comprehensive plan. Late last year, town and county staff met to discuss proposed map changes. There was agreement that modernization of both the town and county comprehensive plan mapping for Lisbon would benefit from updates. Staff noted that many Lisbon subdivisions have prompted recent plan amendments and that, given the number of amendments authorized over time, it is a good time to re-assess appropriateness of densities and uses on a town-wide basis.

There are several geographic areas where there are changes of note:

- SW part of town (Sections 31-33). Several undeveloped properties are proposed to be amended from the Rural Density category to the SDRI category. This increases available density from a five acre category to a 1.5 acre threshold.
- Highway 164 corridor north of Sussex (Section 16). Amend several properties to the Mixed Use category. The town has long envisioned a possible town center type development in this area.
- North of CTH K, Section 36. Amend several properties from Mixed Use to Extractive to accommodate long term quarry expansion plans. The town has recently conditionally

approved rezoning, conditional use and site plan applications contingent upon the land use designation for these lands also being amended.

- West of Townline Rd., Section 12. Amend a number of undeveloped properties from the Rural Density category to the SDR I (1.5 acres/dwelling unit) and SDR II (3 acres/dwelling unit) categories.

County and town planning staff had further dialogue after the close of the public hearing. There were two isolated areas where the town and county maps differed slightly. The final recommended map now brings the maps in concert, as town staff provided information about historic density commitments and county staff agreed that minor adjustments to the map advanced at hearing were logical. In addition, town staff provided further detail regarding the proposed extractive category expansion in the southeast corner of the town. Staff explained that a detailed phasing, setback and berming plan was provided as part of the site plan and conditional use package for proposed long term expansion of the Dawson quarry in Section 36.

STAFF RECOMMENDATION:

It is the opinion of the Planning and Zoning Division Staff that this request be **approved**. The changes modernize the county land use plan mapping for Lisbon to generally align with the town's recently adopted amendments. The proposed amendments increase available residential densities in parts of the town that have been experiencing growth. Other amendments are strategic, in providing for mixed use and extractive use in logical settings. The town-wide amendments will make economic development easier and will remove the necessity for individual plan amendment requests in many cases, thus, reducing the complexity and timeframe for new development projects to gain approval.

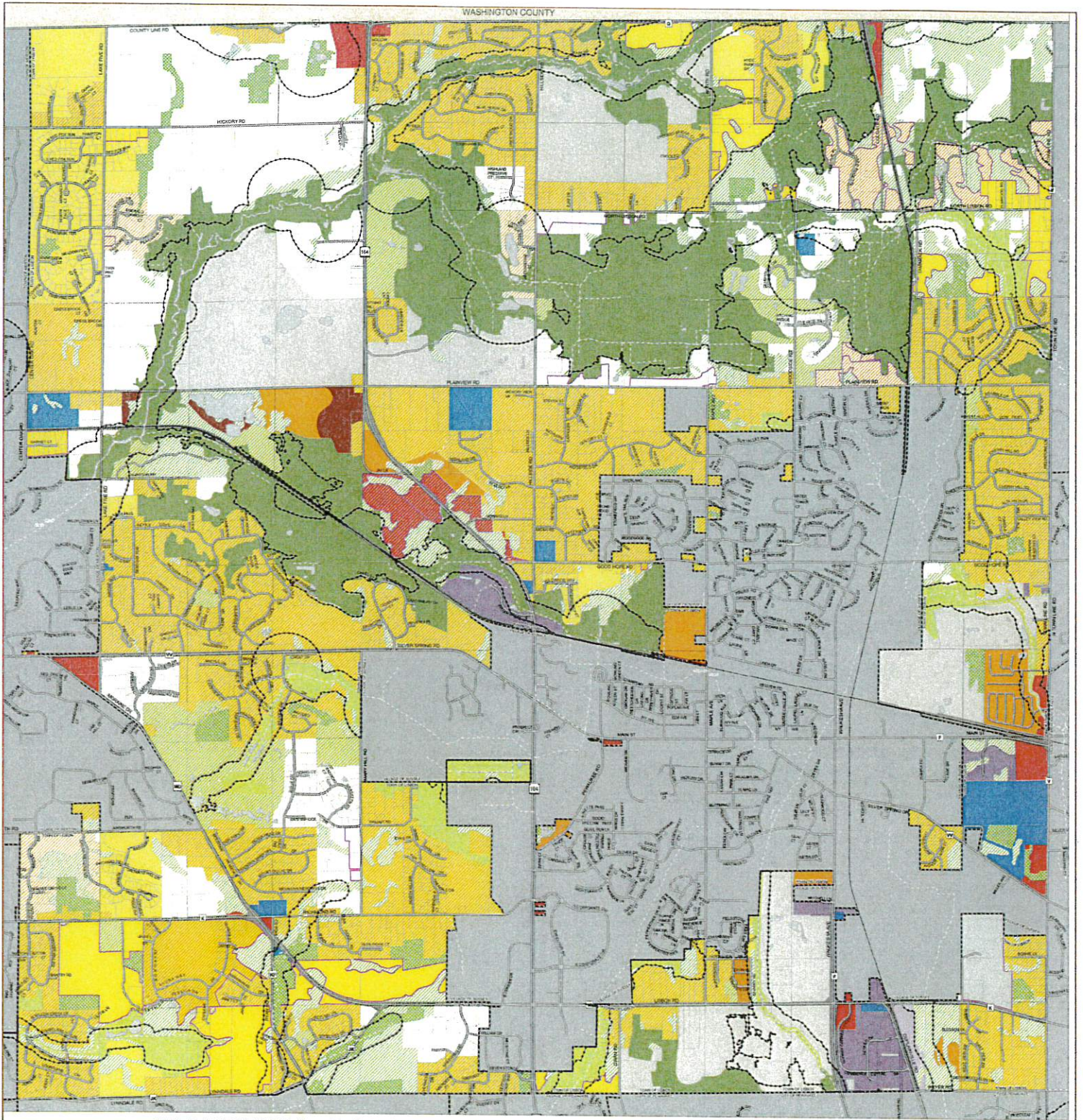
Respectfully submitted,

Jason Fruth

Jason Fruth
Planning & Zoning Manager

Attachment: Map

N:\PRK\ANDLU\Planning and Zoning\Waukesha County Land Development Plan\STAFF REPORT AND RECOMMENDATION\2022\1A WC PPC Comprehensive Mapping 1st.docx



WAUKESHA COUNTY LAND USE PLAN- TOWN OF LISBON

Request 1A, Proposed 2022 Land Use Plan Amendments

Proposed Changes in Land Use Category

County Development Plan

Land Use Category

- | | |
|---------------------------------|---|
| High Density Residential | Rural Density and Other Agricultural Land |
| Medium Density Residential | Farmland Preservation (>35 acres of area per dwelling unit) |
| Low Density Residential | Farmland Preservation w/ EC Overlay (>35 acres of area per dwelling unit) |
| Suburban I Density Residential | Other Open Lands to be Preserved |
| Suburban II Density Residential | Primary Environmental Corridor |

- | | |
|----------------------------------|---|
| Recreational | Industrial |
| Secondary Environmental Corridor | Transportation, Communication & Utilities |
| Isolated Natural Resource Area | Highway and Railway Rights of Way |
| Governmental & Institutional | Landfill |
| Commercial and Office Park | Extractive |
| Mixed Use | Surface Water |

Land Base

- | | |
|-----------------------------------|-----------------|
| Shoreland Jurisdictional Boundary | Parcel Lot Line |
| Street Centerlines | Civil Division |
| Railroad | |



1 MODIFY THE 2022 MATERIAL RECOVERY FACILITY FUND BUDGET AND CARRYOVER BUDGET
2 AUTHORITY FROM 2021 TO 2022 FOR A PORTION OF ONE TIME COSTS ASSOCIATED
3 WITH NEW ROBOTIC SORTING EQUIPMENT AND A NEW EDDY CURRENT
4
5

6 WHEREAS, in 2014, the Waukesha County Board adopted ordinances 168-117 and 168-118
7 authorizing the execution of an Intergovernmental Agreement (“IGA”) with the City of
8 Milwaukee (“City”) and agreement with our private operator to design, build, and operate a
9 new single-single stream Material Recovery Facility (MRF) in a City-owned building located in
10 Milwaukee dated May 5, 2014; and
11

12 WHEREAS, Enrolled Ordinance 176-39 modified the 2021 MRF Fund budget to increase fixed
13 asset expenditures by \$142,403 and the usage of MRF Fund balance by \$142,403 for the
14 purchase of a new eddy current for improved sorting and material capture of aluminum
15 material, and
16

17 WHEREAS, Enrolled Ordinance 176-84 modified the 2021 MRF Fund budget to increase
18 operating expenditures by \$40,000 and the usage of MRF Fund balance by \$40,000 for the one-
19 time costs associated with new robotic sorting equipment to improve the capture of certain
20 paper materials, polyethylene terephthalate (PET), and high-density polyethylene (HDPE); and
21

22 WHEREAS, neither of the projects were completed by year end of 2021; and
23

24 WHEREAS, the \$182,403 total that was appropriated remains unspent and unencumbered,
25 which is being requested to be carried over to 2022.
26

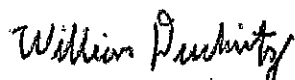
27 THE COUNTY BOARD OF SUPERVISORS OF THE COUNTY OF WAUKESHA ORDAINS that the
28 Material Recovery Facility (MRF) Fund 2022 Budget be modified by appropriating operating
29 expenses by \$40,000, fixed assets by \$142,403, and increasing MRF Fund Balance by \$182,403
30 to offset project costs.

FISCAL NOTE

MODIFY THE 2022 MATERIAL RECOVERY FACILITY FUND BUDGET AND CARRYOVER BUDGET
AUTHORITY FROM 2021 TO 2022 FOR A PORTION OF ONE TIME COSTS ASSOCIATED
WITH NEW ROBOTIC SORTING EQUIPMENT AND A NEW EDDY CURRENT

This ordinance modifies the 2022 MRF budget to carry over a total of \$182,403 of MRF expenses and includes \$142,403 of fixed assets and \$40,000 of operating expenses. Both expenses are funded by the usage of \$182,403 of MRF fund balance. The \$142,403 of fixed assets was originally appropriated under Enrolled Ordinance 176-39 for the purchase of new eddy current equipment. The \$40,000 of operating expenses was appropriated under Enrolled Ordinance 176-84 for the purchase of new robotic sorting equipment. Similar to the original ordinances, the requested carryover reflects the County's share of equipment costs, which is a 50% share with the City of Milwaukee, after applying grant funds. Neither was included in the annual carry over ordinance approved by the County Board in February.

This ordinance results in no tax levy impact.



William Duckwitz
Budget Manager
3/22/2022
AJK JE#2022-00001769

1 RESOLUTION TO ADOPT THE WAUKESHA COUNTY 2022-2026 LIBRARY SERVICES PLAN,
2 APPROVE NEW COUNTY LIBRARY STANDARDS, AND INCLUDE ELECTRONIC MATERIALS FOR
3 CIRCULATION PURPOSES IN THE TRUE NON-RESIDENT LIBRARY TAX LEVY FORMULAS
4
5

6 WHEREAS, the Waukesha County Library Planning Committee ("Committee"), appointed by the
7 Waukesha County Board, met from July 2021 to February 2022 and revised the County Library
8 Services Plan; and
9

10 WHEREAS, the Committee recommends changes to certain Waukesha County member library
11 standards, adoption of new quality assurance standards, and a change in what library materials
12 are considered in circulation; and
13

14 WHEREAS, the Committee endorses the existing formula for collecting taxes from residents that
15 live in non-library (True Non-Resident TNR) communities for borrowing privileges at any of the
16 sixteen (16) public libraries in the County; and
17

18 WHEREAS, this collection formula taxes TNR communities for their share of the library
19 operating expenses proportionate to their overall use of library materials in the County; and
20

21 WHEREAS, the Committee recommends no change to the collection formula itself besides the
22 inclusion of electronic materials in library circulation alongside the previously included physical
23 materials when determining TNR community library utilization; and
24

25 WHEREAS, the Committee recommends no change in the distribution formula itself, except the
26 inclusion of electronic materials in library circulation alongside physical materials; and
27

28 WHEREAS, these changes better represent the usage of Bridges System member libraries by
29 TNR communities, which has seen an increase in usage of electronic materials in recent years,
30 but have not been incorporated into the collection and distribution formulas' circulation
31 factors, and;
32

33 WHEREAS, the new standards for Waukesha County member libraries include revisions to the
34 requirements for library material expenditures per capita, collection size, and number of public
35 internet computers, as well as the adoption of new quality assurance standards; and
36

37 WHEREAS, the Committee recommends approval of new standards for Waukesha County
38 libraries that would replace current standards that have been previously approved by libraries
39 pursuant to the requirements set forth in Section 43.11 (3) (d), Wisconsin Statutes.
40

41 THE COUNTY BOARD OF SUPERVISORS OF THE COUNTY OF WAUKESHA RESOLVES that the
42 Waukesha County Library Services Plan for 2022-2026 is adopted and placed on file with the
43 County Clerk of Waukesha County.
44

45 BE IT FURTHER RESOLVED that the County Board approves of the new Waukesha County library
46 standards set forth in the Waukesha County Library Services Plan for 2022-2026 and the
47 approved standards shall replace all previous County library standards.
48

49 BE IT FURTHER RESOLVED that the County Board approves the inclusion of electronic materials
50 in library circulation alongside the previously included physical materials when determining
51 True Non-Resident (TNR) community library utilization for the TNR tax collection and
52 distribution formulas, as set forth in the Waukesha County Library Services Plan for 2022-2026.

FISCAL NOTE

**RESOLUTION TO ADOPT THE WAUKESHA COUNTY 2022-2026 LIBRARY SERVICES PLAN,
APPROVE NEW COUNTY LIBRARY STANDARDS, AND INCLUDE ELECTRONIC MATERIALS FOR
CIRCULATION PURPOSES IN THE TRUE NON-RESIDENT LIBRARY TAX LEVY FORMULAS**

This resolution adopts the 2022-2026 Library Services Plan, which was put forth by the Waukesha County Library Planning Committee. This plan does not recommend modifying the library tax collection or distribution formulas calculation methods but does begin counting electronic materials (e.g., E-books) as circulation along with physical materials (e.g., books) that had previously been included.

Below is a table outlining what the impact on the True Non-Resident (TNR) communities' library tax levy would have been if this change had been in effect for the 2022 budget. (This change in formula would be effective beginning in the 2023 budget.) This table compares the Bridges System library tax collection formula for the 2022 Adopted Budget and the theoretical levy amount if electronic circulation had been included. As outlined below, the inclusion of electronic materials increases the tax collection amount from TNR communities, but this increase is driven by higher utilization of electronic materials by TNR residents who use a Bridges System member library.

| 2022 LIBRARY TAX LEVY ADOPTED BUDGET WITH AND WITHOUT TNR ELECTRONIC CIRCULATION | | | | | |
|---|---|---------------------------|---|------------------|-------------|
| Category | | 2022 Adopted Budget | 2022 Levy with Electronic Circulation | \$ Change | % Change |
| Calculated allowable expenditures | | \$19,750,188 | \$19,750,188 | \$0 | 0.0% |
| Countywide TNR percent 2 years prior | x | 18.629% | 19.182% | N/A | N/A |
| County levy (TNR % times allowable expenditures)* | | \$3,679,191 | \$3,788,417 | \$109,226 | 3.0% |

*Excludes \$27,515 intercounty payment which is unaffected by the proposed changes.

This resolution also adopts revised Bridges member library standards for Waukesha County member libraries. The revised standards include library material expenditures per capita, number of public internet computers, and collection size. Additionally, this plan also recommends the creation of new, qualitative quality assurance standards for Waukesha County member libraries. These new standards apply to member libraries operated by local municipalities within Waukesha County. The implementation of these standard changes result in no cost impact to Waukesha County.

William Duckwitz

William Duckwitz
Budget Manager
3/23/2022
AK

1 MODIFY THE DEPARTMENT OF HEALTH AND HUMAN SERVICES 2022 BUDGET AND CREATE
2 ELEVEN (11) REGULAR FULL-TIME POSITIONS FOR COMMUNITY SUPPORT SERVICES
3
4

5 WHEREAS the Waukesha County Department of Health and Human Services has utilized a
6 contracted provider within the Mental Health Outpatient – Intensive Division to provide case
7 management, the Community Support Program (CSP), and transition-to-independent-living
8 assistance and community supports to clients with severe and persistent mental illness; and
9

10 WHEREAS, the Department of Health and Human Services completed a request for proposal for
11 these services, of which the current vendor did not pursue; and
12

13 WHEREAS, none of the respondents met the required score thresholds due to lacking
14 experience with the required services, having no experience recruiting for these services in
15 Waukesha County, and contract pricings; and
16

17 WHEREAS, the Department of Health and Human Services could more efficiently meet
18 operational and administrative requirements by eliminating the use of contracted staff for
19 these services; and
20

21 WHEREAS, the Mental Health Outpatient – Intensive Division can provide these services with
22 the addition of four (4) regular full-time Mental Health Counselor positions, three (3) regular
23 full-time Senior Mental Health Counselor positions, and four (4) regular full-time Human
24 Services Support Specialist positions; and
25

26 WHEREAS, the elimination of contracted staff will reduce operating expenses, and the addition
27 of eleven (11) regular full-time positions will increase personnel cost expenses.
28

29 THE COUNTY BOARD OF SUPERVISORS OF THE COUNTY OF WAUKESHA ORDAINS
30 that the 2022 Waukesha County Department of Health and Human Services Mental Health
31 Outpatient – Intensive Division budget be modified to create effective May 1, 2022 four (4)
32 regular full-time Mental Health Counselor positions (Open Range 07, 2022 salary: \$24.43/hour
33 – \$ 32.31/hour), three (3) regular full-time Senior Mental Health Counselor positions (Open
34 Range 09, 2022 salary: \$26.94/hour – \$35.63/hour), and four (4) regular full-time Human
35 Services Support Specialist positions (Step Range 05, 2022 salary: \$16.94/hour – \$22.37/hour).
36

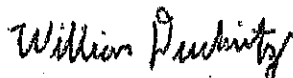
37 IT IS FURTHER ORDAINED that the 2022 Waukesha County Department of Health and Human
38 Services Mental Health Outpatient – Intensive Division budget be modified by reducing
39 operating expenses by \$551,869 and increasing personnel costs by \$551,869.

FISCAL NOTE

MODIFY THE DEPARTMENT OF HEALTH AND HUMAN SERVICES 2022 BUDGET AND CREATE ELEVEN (11) REGULAR FULL- TIME POSITIONS FOR COMMUNITY SUPPORT SERVICES

This ordinance will modify the Department of Health and Human Services 2022 budget by transferring \$551,869 of contracted services expenses within the operating expenses appropriation to personnel expenses to fund the creation of 11 regular full-time positions. The positions created include (3) Senior Mental Health Counselors, (4) Mental Health Counselors, and (4) Human Services Support Specialist. These positions were originally contracted through Homes for Independent Living, Inc. (HILCO) to provide case management, the Community Support Program (CSP), and transition-to-independent-living assistance and community supports to clients with severe and persistent mental illness. When the request for proposal for the contract was distributed, HILCO declined to renew the contract, and the other vendor submissions were deemed inadequate. Health and Human Services management indicates that these services address important community needs and proposes bringing most of these contracted positions in-house. HILCO has agreed to continue providing these services until June 30th, or earlier dependent on the implementation timeline.

As these positions are being created mid-year with an intended May 1st, 2022 start date to allow for some transition time, the total budgeted impact of these positions in 2022 is estimated at \$551,869, or approximately 8 months of personnel expenses (May-December), including prorated benefits. The HILCO positions currently perform work at the Mental Health Center facility and already have workspaces and equipment (e.g., computers, phones), with expenses included in the existing 2022 budget, so no additional related operating expenses are anticipated for the new county-employed positions. The total 2022 budgeted amount for HILCO contracted services is \$826,087. After the transfer of \$551,869 to personnel costs, the remaining balance of \$274,218 will remain in contracted services to fund the cost of 4 months of transition time with HILCO from January 1st to April 30th, 2022. The annualized expenses associated with the creation of the 11 positions is slightly less than the budgeted HILCO contract (\$826,087) at \$825,046, meaning that no additional material ongoing tax levy impact is anticipated as a result of this ordinance.



William Duckwitz
Budget Manager
3/23/2022
AJK JE#2022-00001770